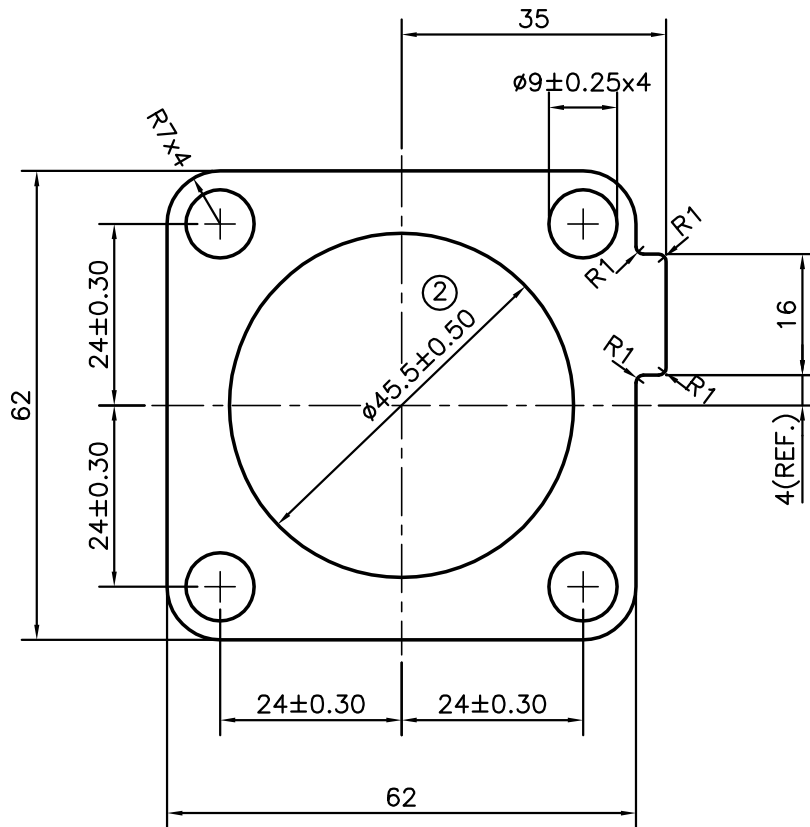


P-10749-1

S2860

27102



- ② DIMENSION CHANGED FROM  $\phi 46.5 \pm 0.50$  TO  $\phi 45.5 \pm 0.50$  AS PER CUSTOMER'S REQUIREMENT & WEIGHT ALSO CHANGED FROM 5.166 kg/m TO 5.361 kg/m

TOLERANCES ON OVERALL WIDTHS & WIDTHS ACROSS FLATS OF BARS, & REGULAR SECTIONS

UPTO 6.40mm - $\pm 0.20$	UPTO 32.0mm - $\pm 0.38$	UPTO 120.0mm - $\pm 0.85$	UPTO 320.00mm - $\pm 1.70$
UPTO 10.0mm - $\pm 0.23$	UPTO 50.0mm - $\pm 0.46$	UPTO 160.0mm - $\pm 1.02$	
UPTO 12.0mm - $\pm 0.25$	UPTO 60.0mm - $\pm 0.53$	UPTO 200.0mm - $\pm 1.14$	
UPTO 16.0mm - $\pm 0.28$	UPTO 80.0mm - $\pm 0.69$	UPTO 250.0mm - $\pm 1.40$	
UPTO 25.0mm - $\pm 0.30$	UPTO 100.0mm - $\pm 0.75$	UPTO 300.0mm - $\pm 1.65$	



SYMBOL OF QUALITY  
AN ISO 9001 COMPANY

**JINDAL ALUMINIUM LTD.**  
BANGALORE-560073 (INDIA)

	NAME	DATE
DRAWN	R.D.Sharma	12-04-2011
CHECKED		
APPROVED	S.S.GARG	16-04-2011

- ALL DIMENSIONS ARE IN mm.
- ROUND OFF ALL SHARP CORNERS WITH 0.40 mm.
- TOLERANCES WILL BE AS PER, IS:6477-1983 UNLESS OTHERWISE SPECIFIED

SCALE	1:1
AREA mm <sup>2</sup>	1985.498
PERIMETER mm.	242.265
WEIGHT kg/m	5.361②

PARTY'S NAME	HYVA INDIA PVT. LTD., MUMBAI	DRAWING No.	P-10749-1	SECTION No.	-
PARTY'S DRAWING No.	2302107 REV. M	S2860 ISSUE-2	27102	S2860 ISSUE-2	27102
ALLOY & TEMPER	6005 T6				
DESCRIPTION	MISC. SECTION				