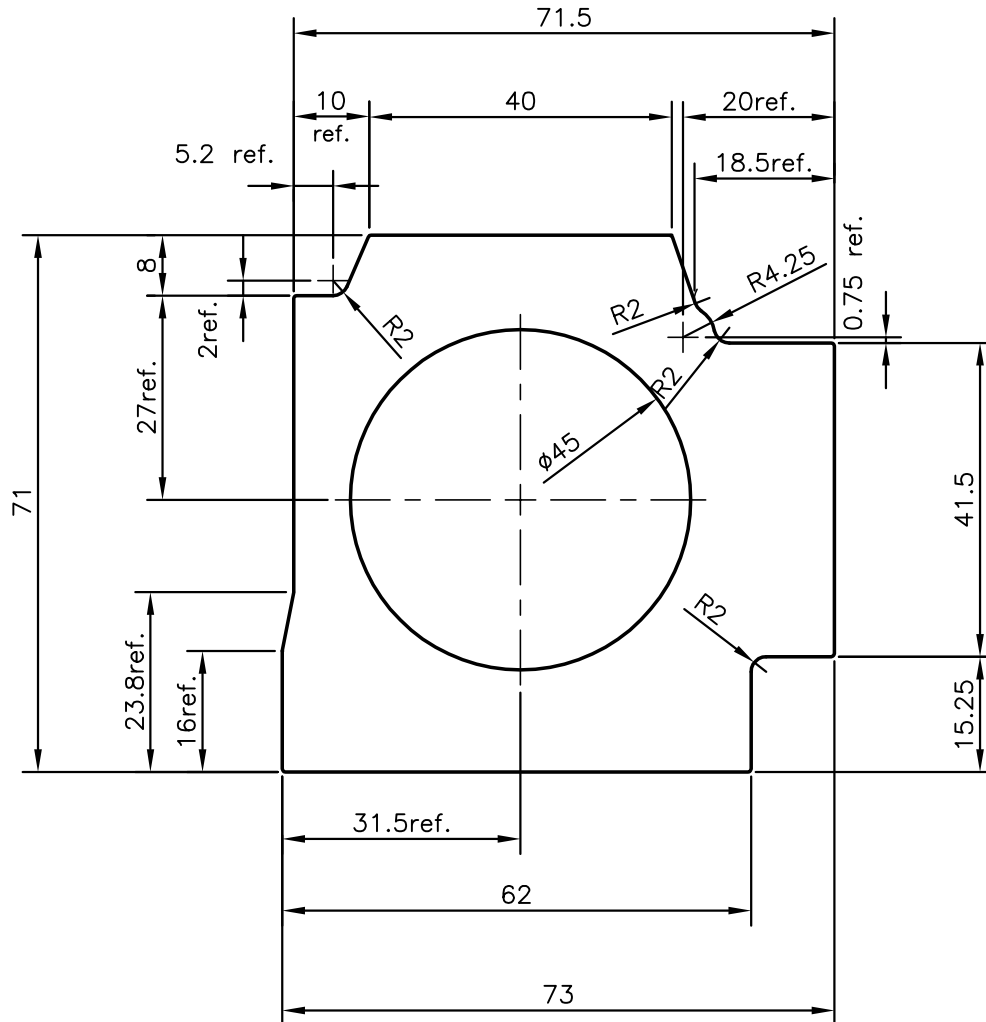


P-10844

S2889

27103



SYMBOL OF QUALITY
AN ISO 9001 COMPANY

JINDAL ALUMINIUM LTD.
BANGALORE-560073 (INDIA)

	NAME	DATE
DRAWN	J.P.KAUSHIK	14-03-2011
CHECKED		
APPROVED	S.S.GARG	08-04-2011

1. ALL DIMENSIONS ARE IN mm.
2. ROUND OFF ALL SHARP CORNERS WITH 0.40 mm.
3. TOLERANCES WILL BE AS PER IS:6477-1983 UNLESS OTHERWISE SPECIFIED

SCALE	1:1
AREA mm ²	3017.369
PERIMETER mm.	276.674
WEIGHT kg/m	8.147

PARTY'S NAME	SUSIN TECHNOLOGIES PVT. LTD., COIMBATORE
PARTY'S DRAWING No.	AS PER DRAWING
ALLOY & TEMPER	6063 T6
DESCRIPTION	ACTUATOR BODY

DRAWING No.	SECTION No.
P-10844	-
S2889	S2889
27103	27103