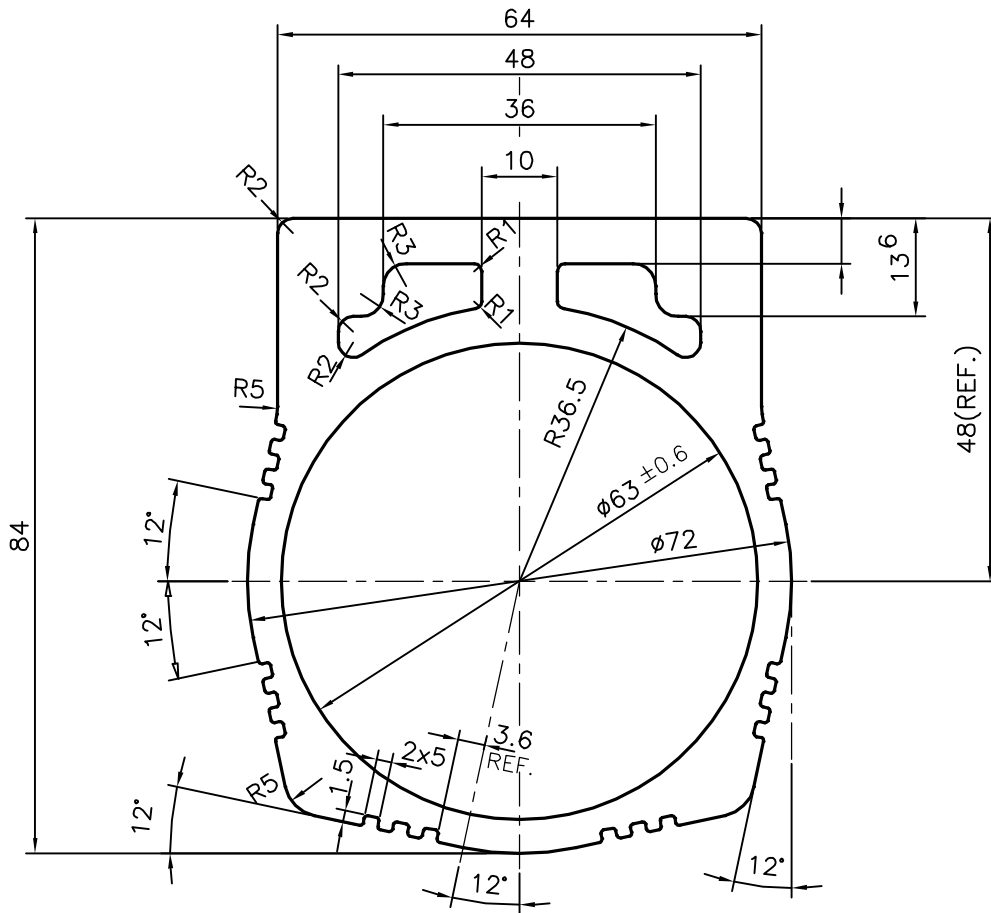


P-13491-1

S4086

27120



- ☞ **ECCENTRICITY :- ±0.3**
- ☞ **HARDNESS :- 70-80 BHN**

TOLERANCES ON OVERALL WIDTHS & WIDTHS ACROSS FLATS OF BARS, & REGULAR SECTIONS

UPTO 6.40mm - ±0.20	UPTO 32.0mm - ±0.38	UPTO 120.0mm - ±0.85	1. STRAIGHTNESS=1.7mm/M 2. TWIST=1.7mm/M 3. ANGULARITY= ±2° 4. FLATNESS =0.007xWIDTH
UPTO 10.0mm - ±0.23	UPTO 50.0mm - ±0.46	UPTO 160.0mm - ±1.02	
UPTO 12.0mm - ±0.25	UPTO 60.0mm - ±0.53	UPTO 200.0mm - ±1.14	
UPTO 16.0mm - ±0.28	UPTO 80.0mm - ±0.69	UPTO 250.0mm - ±1.40	
UPTO 25.0mm - ±0.30	UPTO 100.0mm - ±0.75	UPTO 300.0mm - ±1.65	



SYMBOL OF QUALITY
AN ISO 9001 COMPANY

JINDAL ALUMINIUM LTD.
BANGALORE-560073 (INDIA)

		NAME	DATE
DRAWN	PARVESH		19-04-2014
CHECKED			
APPROVED	S.S.GARG		24-04-2014
SCALE			1:1
AREA mm ²			1975.744
PERIMETER mm.			322.905
WEIGHT kg/m			5.335
DRAWING No.		SECTION No.	
P-13491-1		-	
S4086		S4086	
27120		27120	

1. ALL DIMENSIONS ARE IN mm.
2. ROUND OFF ALL SHARP CORNERS WITH 0.40 mm.
3. TOLERANCES WILL BE AS PER IS:6477-1983, UNLESS OTHERWISE SPECIFIED

PARTY'S NAME	PRAGATI AUTOMATION PVT. LTD., BANGALORE
PARTY'S DRAWING No.	CV060402-EXT
ALLOY & TEMPER	6005 T6
DESCRIPTION	MOTOR BODY