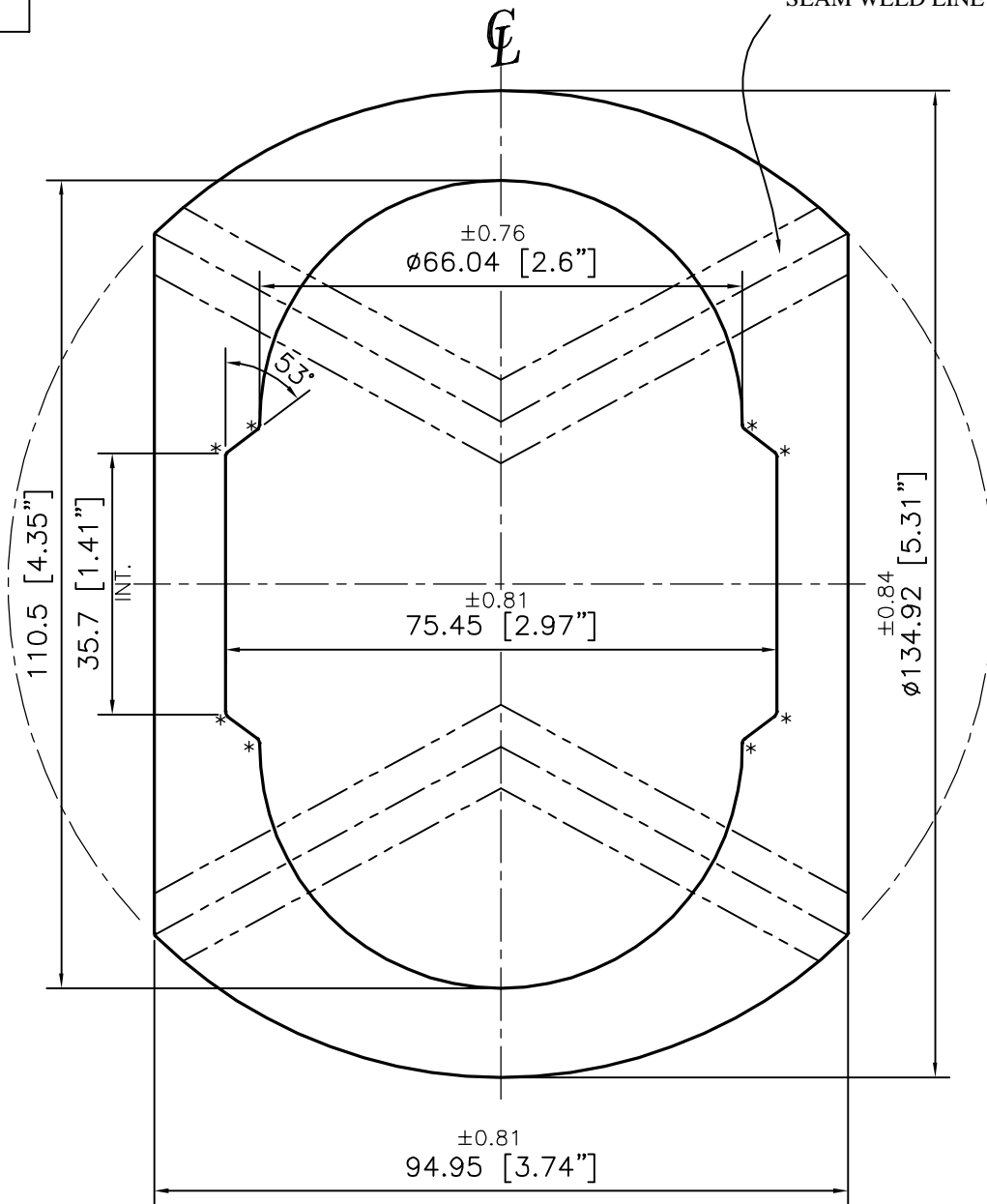


P-15576-2

S4920

27129

APPROXIMATE SEAM WELD LINE



SYMMETRY ± 0.80 mm MAX.

ANGULARITY = $\pm 1^\circ$

X = RADIUS 0.76 mm. (8 PLACES)



SYMBOL OF QUALITY
AN ISO 9001 COMPANY

JINDAL ALUMINIUM LTD.
BANGALORE-560073 (INDIA)

	NAME	DATE
DRAWN	J.P.KAUSHIK	27-04-2016
CHECKED		
APPROVED	S.S. GARG	29-04-2016
SCALE		1:1
AREA mm ²		4925.204
PERIMETER mm.		402.291
WEIGHT kg/m		13.298
DRAWING No.	SECTION No.	
P-15576-2	-	
S4920	S4920	
27129	27129	

1. ALL DIMENSIONS ARE IN mm.
2. ROUND OFF ALL SHARP CORNERS WITH 0.40 mm.
3. TOLERANCES WILL BE AS PER BS:EN-755-9, UNLESS OTHERWISE SPECIFIED

PARTY'S NAME RABWIN INDUSTRIES PVT. LTD., COIMBATORE

PARTY'S DRAWING No. AS PER AUTOCAD DRAWING - C015902

ALLOY & TEMPER 6063 T6

DESCRIPTION ACTUATOR BODY SECTION