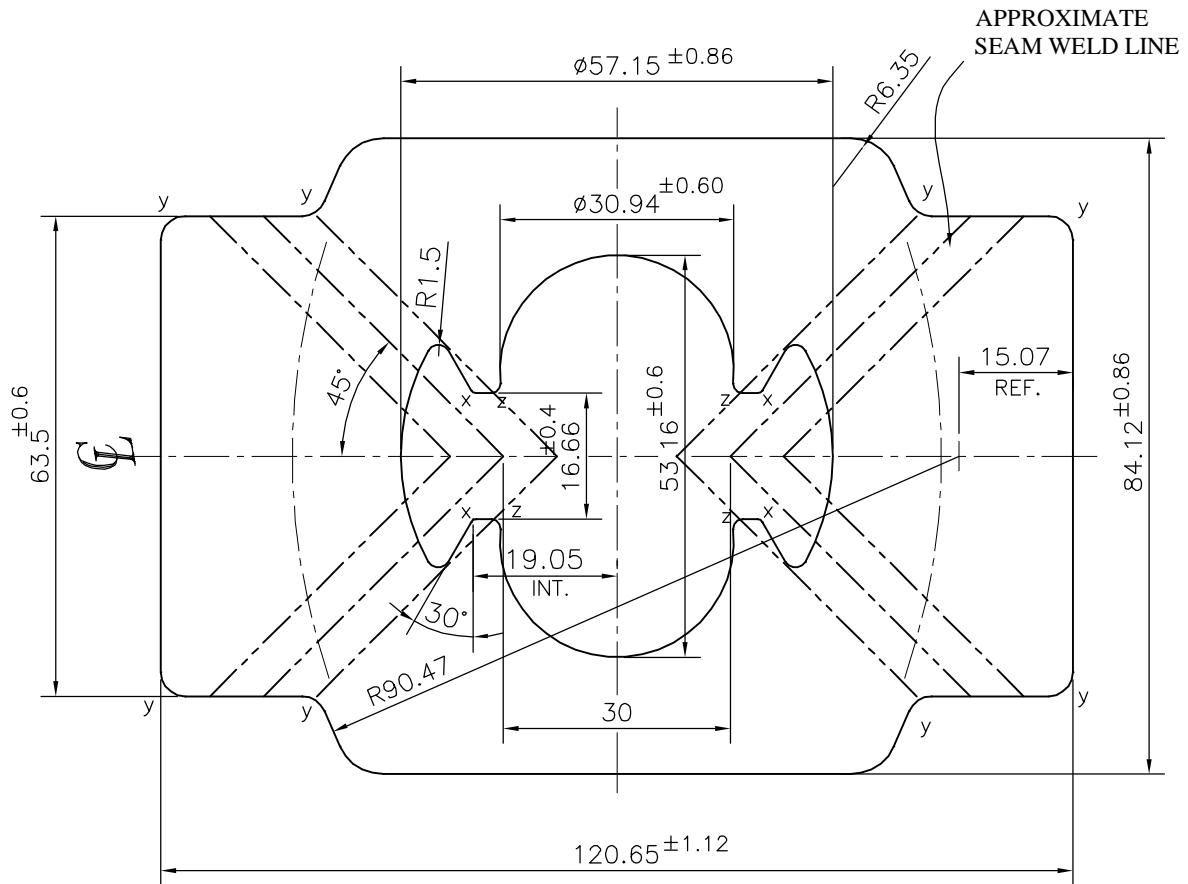


P-15575-2

S5081

27133



ECCENTRICITY  $\pm 0.80$  mm MAX.  
 ANGULARITY =  $\pm 1^\circ$

X = RADIUS 0.8 mm. (4 PLACES)  
 Y = RADIUS 3.18 mm. (8 PLACES)  
 Z = RADIUS 1.2 mm. (4 PLACES)



SYMBOL OF QUALITY  
AN ISO 9001 COMPANY

**JINDAL ALUMINIUM LTD.**  
BANGALORE-560073 (INDIA)

	NAME	DATE
DRAWN	PARVESH	31-08-2016
CHECKED		
APPROVED	S.S. GARG	14-09-2016
SCALE		1:1
AREA mm <sup>2</sup>		7188.113
PERIMETER mm.		384.148
WEIGHT kg/m		19.408
DRAWING No.	SECTION No.	
P-15575-2	-	
S5081	S5081	
27133	27133	

- ALL DIMENSIONS ARE IN mm.
- ROUND OFF ALL SHARP CORNERS WITH 0.40 mm.
- TOLERANCES WILL BE AS PER BS:EN-755-9, UNLESS OTHERWISE SPECIFIED

PARTY'S NAME	RABWIN INDUSTRIES PVT. LTD., COIMBATORE
PARTY'S DRAWING No.	AS PER AUTOCAD DRAWING - C048397
ALLOY & TEMPER	6063 T6
DESCRIPTION	ACTUATOR BODY SECTION