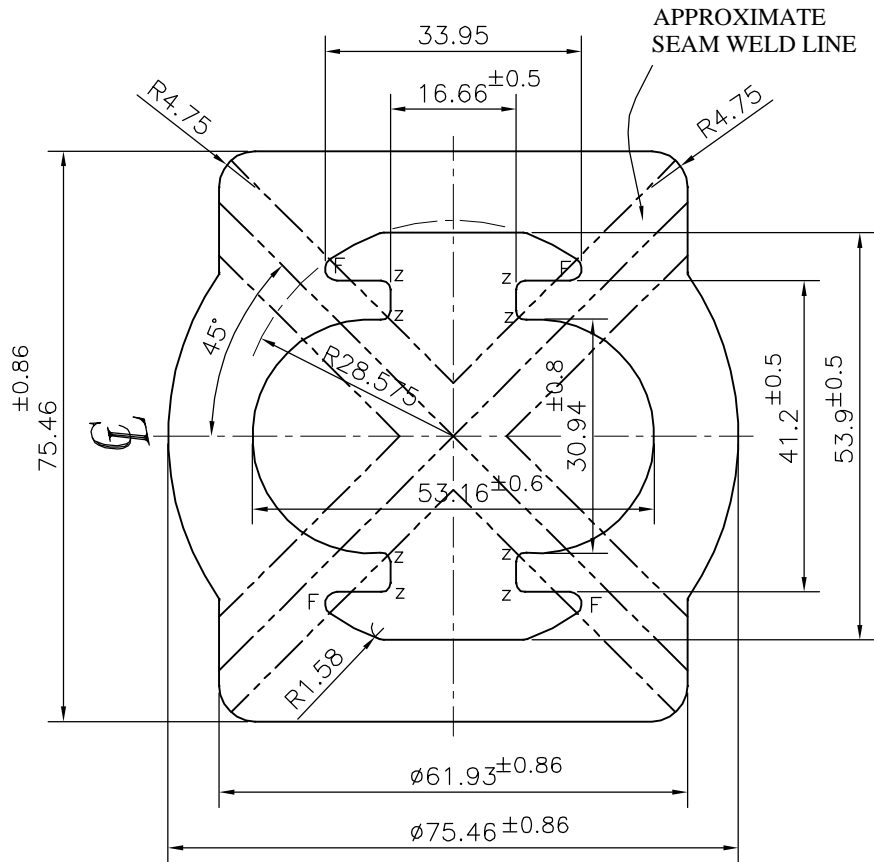


P-15574-1

S5114

27134



☞ ECCENTRICITY  $\pm 0.80$  mm MAX.  
 ☞ ANGULARITY  $= \pm 1^\circ$

F = FULL RADIUS (4 PLACES)  
 Z = RADIUS 1.2 mm. (8 PLACES)



SYMBOL OF QUALITY  
 AN ISO 9001 COMPANY

**JINDAL ALUMINIUM LTD.**  
 BANGALORE-560073 (INDIA)

	NAME	DATE
DRAWN	PARVESH	31-08-2016
CHECKED		
APPROVED	B. NATRAJ	18-10-2016
SCALE		1:1
AREA mm <sup>2</sup>		3061.647
PERIMETER mm.		272.148
WEIGHT kg/m		8.266
DRAWING No.	SECTION No.	
P-15574-1	-	
S5114	S5114	
27134	27134	

1. ALL DIMENSIONS ARE IN mm.
2. ROUND OFF ALL SHARP CORNERS WITH 0.40 mm.
3. TOLERANCES WILL BE AS PER BS:EN-755-9, UNLESS OTHERWISE SPECIFIED

PARTY'S NAME	RABWIN INDUSTRIES PVT. LTD., COIMBATORE
PARTY'S DRAWING No.	AS PER CUSTOMER REQUIREMENT-B052073
ALLOY & TEMPER	6063 T6
DESCRIPTION	ACTUATOR BODY SECTION