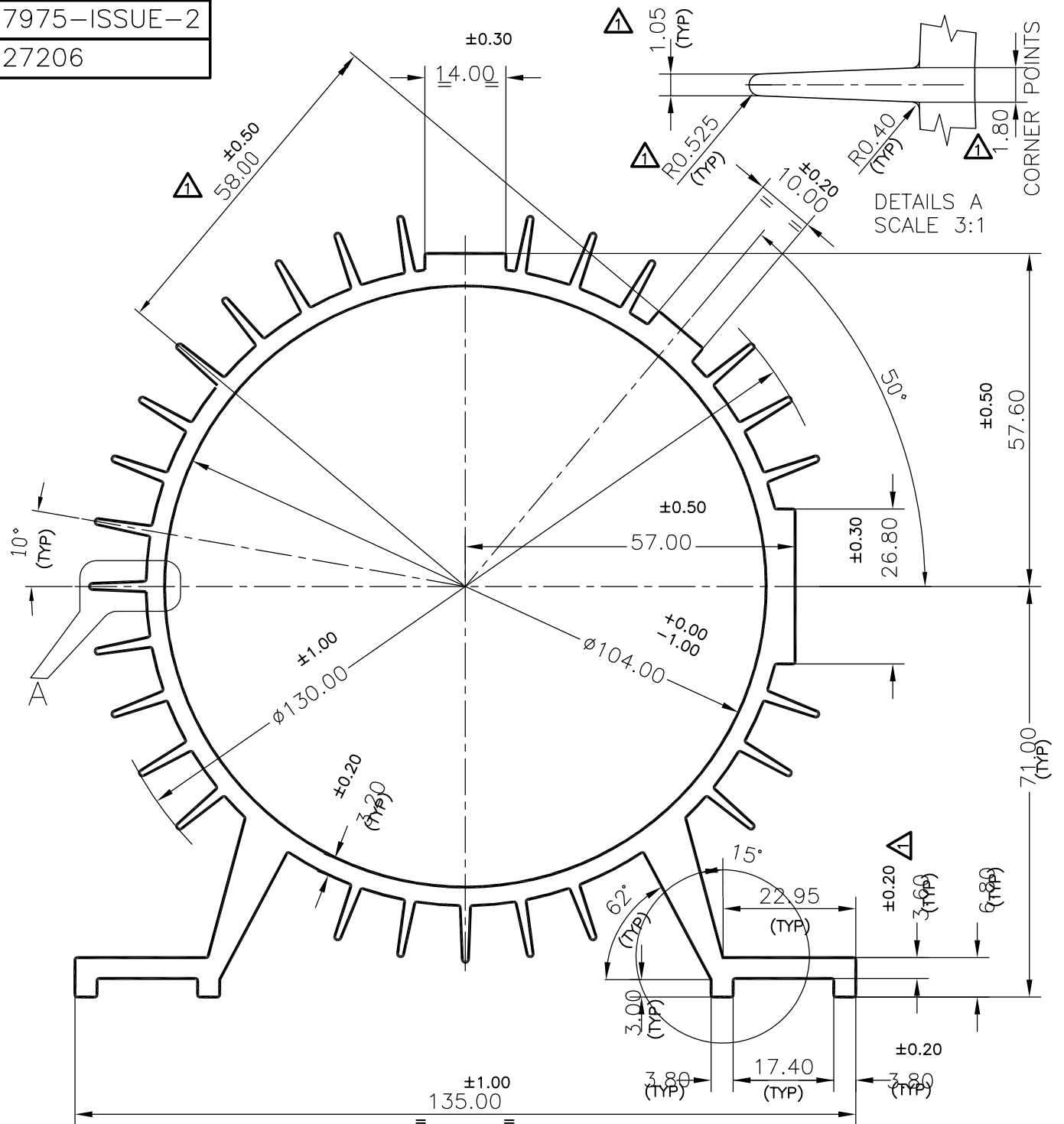


X082
7975-ISSUE-2
27206



25-2-2000	△	DIM'S 57.00±0.5, 3.80±0.20, 2.00, R0.625, & 1.25 PARTY IS CHANGED TO 58.00±0.5, 3.60±0.20, 1.80, R0.525, & 1.05 WT kg/m 5.787 TO 5.669, RESP				
-----------	---	---	--	--	--	--

DATE	MODI No	MODIFICATIONS	DRAWN	CHD	APP	REMARKS
------	---------	---------------	-------	-----	-----	---------

<p>SYMBOL OF QUALITY AN ISO 9002 COMPANY</p>	<p>JINDAL ALUMINIUM LTD. BANGALORE-560073 (INDIA)</p>		NAME	DATE
			DRAWN	P,KULKARNI 11-9-99
			CHECKED	

1. ALL DIMENSIONS ARE IN mm. 2. ROUND OFF ALL SHARP CORNERS WITH 0.40 mm. 3. TOLERANCES WILL BE AS PER IS: 6477-1983 UNLESS OTHERWISE SPECIFIED			APPROVED	
---	--	--	----------	--

PARTY'S NAME	GANGA ENGG CORPORATION., COIMBATORE.	SCALE	1:1
PARTY'S DRAWING No.	AS PER SKETCH	WEIGHT kg/m	5.669
ALLOY & TEMPER	HE9 WP	SECTION No.	27206
DESCRIPTION	PUMP BODY	DRAWING No.	27206