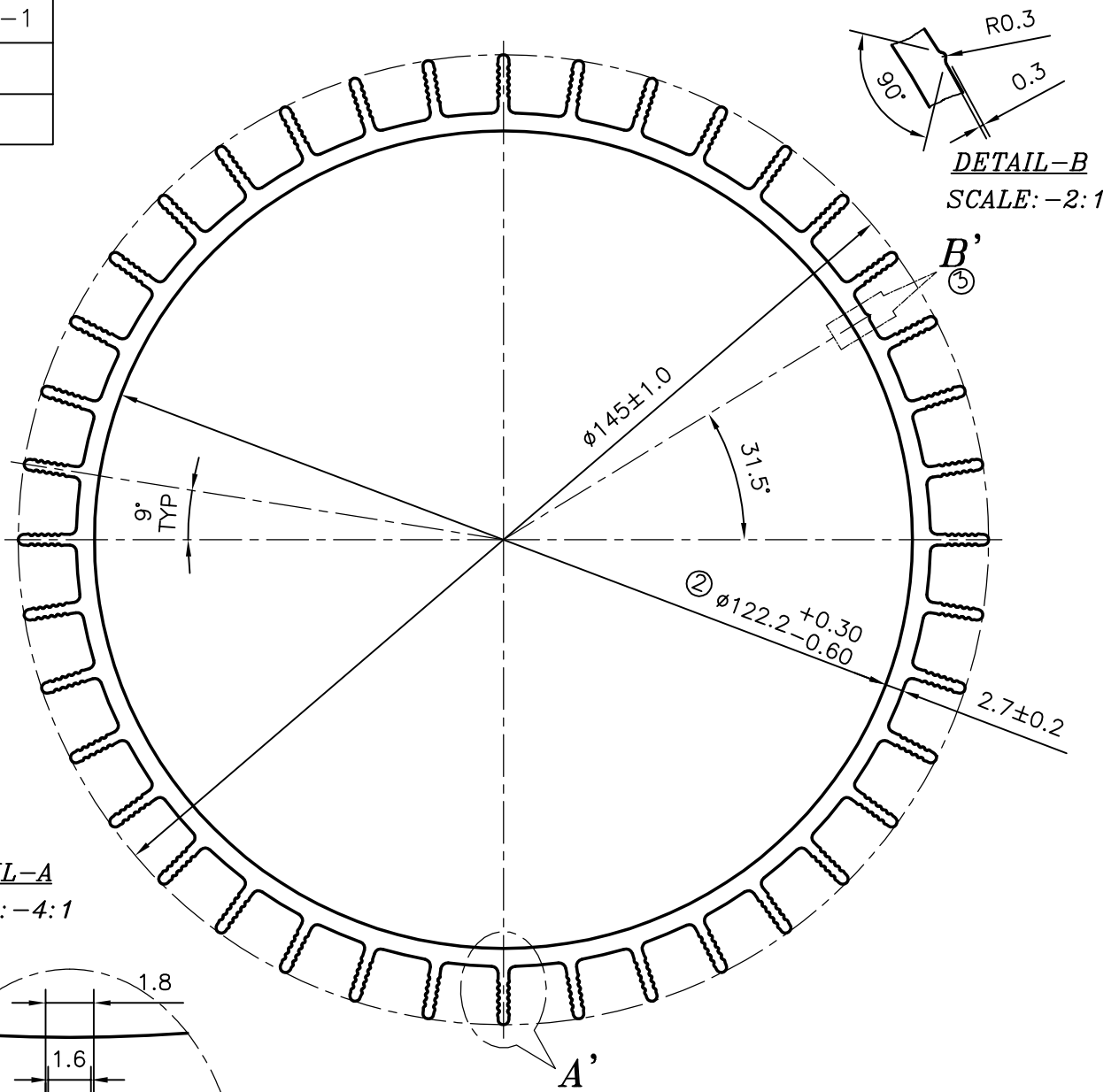


P-6202-1

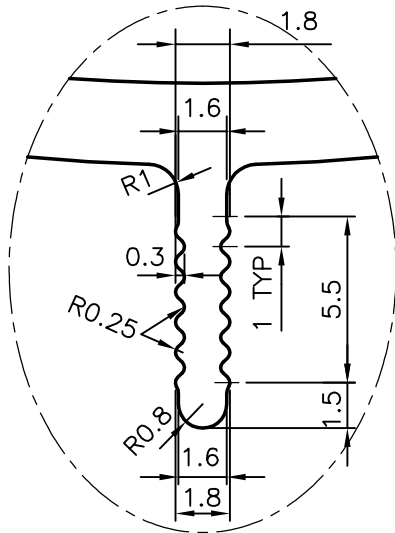
27231



DETAIL-B
SCALE: -2:1

B'
③

DETAIL-A
SCALE: -4:1



ISSUE - ③

V GROOVE ADDED 0.3x90°

AND WEIGHT ALSO CHANGED FROM 4.331 kg/m TO 4.332 kg/m

ISSUE - ②

DIAMETER CHANGED FROM 121.5^{+0.3}/_{-0.6} mm TO 122.2^{+0.3}/_{-0.6} mm
AND WEIGHT ALSO CHANGED FROM 4.376 kg/m TO 4.331 kg/m



SYMBOL OF QUALITY
AN ISO 9001 COMPANY

JINDAL ALUMINIUM LTD.
BANGALORE-560073 (INDIA)

	NAME	DATE
DRAWN	J.P.KAUSHIK	21-01-2010
CHECKED		
APPROVED		

- ALL DIMENSIONS ARE IN mm.
- ROUND OFF ALL SHARP CORNERS WITH 0.40 mm.
- TOLERANCES WILL BE AS PER IS:6477-1983, UNLESS OTHERWISE SPECIFIED

SCALE	1:1
AREA mm ²	1604.35
PERIMETER mm.	1124.177
WEIGHT kg/m	4.332 ③

PARTY'S NAME GENERAL CATEGORY, COIMBATORE MARKET.

DRAWING No.	SECTION No.
P-6202-1	-
27231	27231-ISSUE-3

PARTY'S DRAWING No. AS PER DRAWING

ALLOY & TEMPER HE9 WP

DESCRIPTION MOTOR BODY