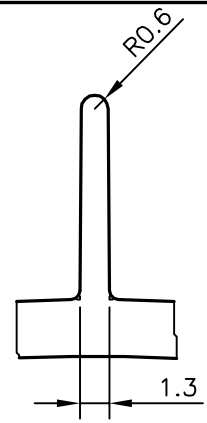
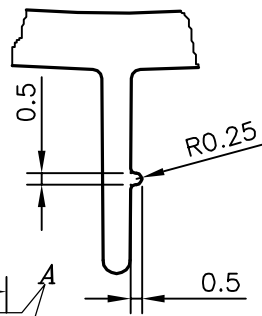


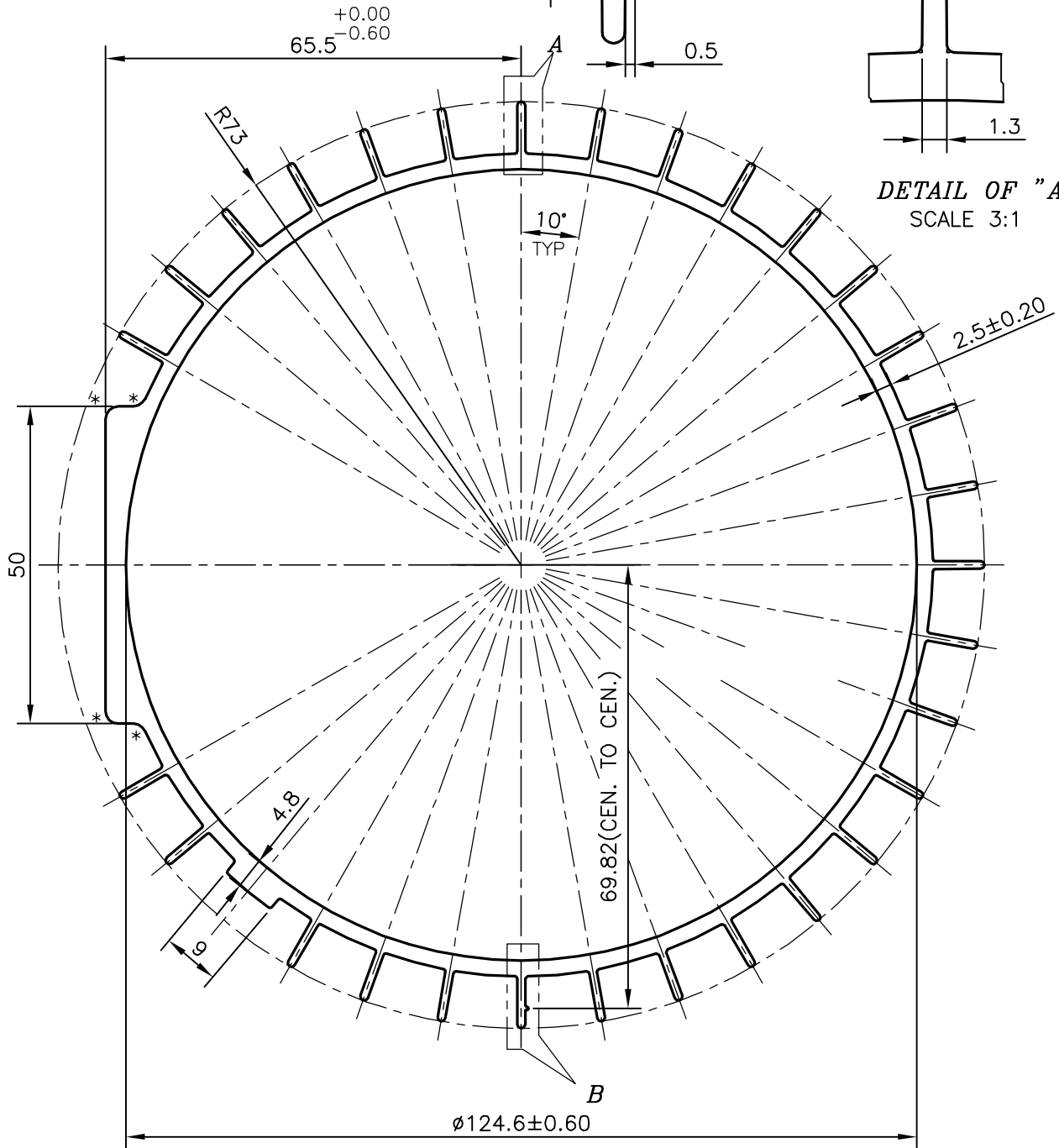
P-16702-1

27281

DETAIL OF "B"
SCALE 3:1



DETAIL OF "A"
SCALE 3:1



* = 2.0 RADIUS (4 PLACES)



SYMBOL OF QUALITY
AN ISO 9001 COMPANY

JINDAL ALUMINIUM LTD.
BANGALORE-560073 (INDIA)

| | NAME | DATE |
|-------------|-----------------|------------|
| DRAWN | J.P.KAUSHIK | 10-02-2017 |
| CHECKED | | |
| APPROVED | B.NATARAJ | 20-03-2017 |
| SCALE | | 1:1 |
| AREA | mm ² | 1433.638 |
| PERIMETER | mm. | 884.875 |
| WEIGHT | kg/m | 3.871 |
| DRAWING No. | SECTION No. | |
| P-16702-1 | - | |
| 27281 | 27281 | |

1. ALL DIMENSIONS ARE IN mm.
2. ROUND OFF ALL SHARP CORNERS WITH 0.40 mm.
3. TOLERANCES WILL BE AS PER IS:6477-1983 , UNLESS OTHERWISE SPECIFIED

| | |
|---------------------|-------------------------------------|
| PARTY'S NAME | GENERAL CATEGORY, COIMBATORE MARKET |
| PARTY'S DRAWING No. | MODIFIED OF 27267 & REQUIREMENT |
| ALLOY & TEMPER | HE9 WP |
| DESCRIPTION | MOTOR BODY SECTION |