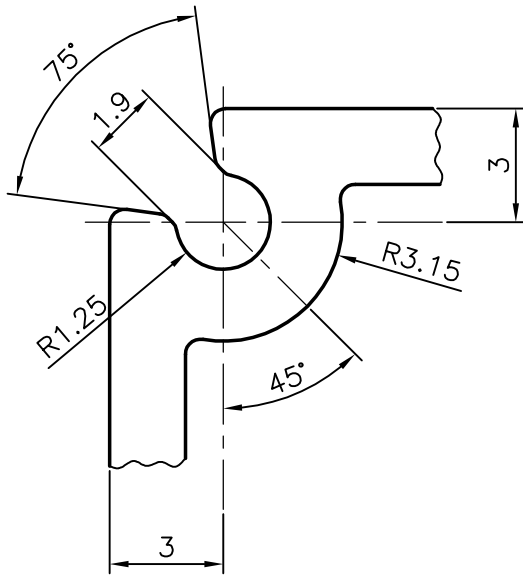
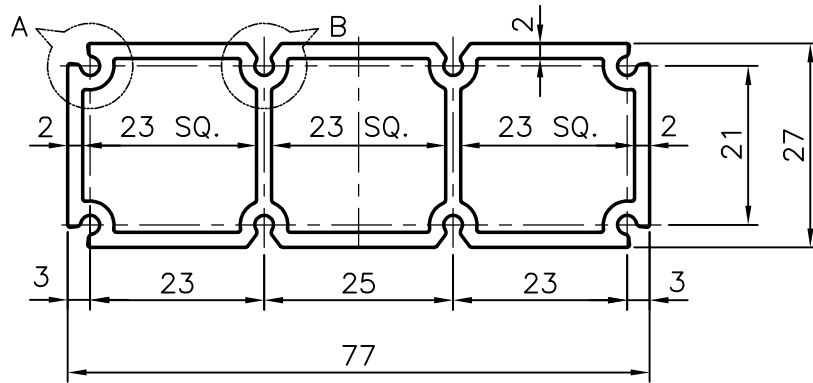
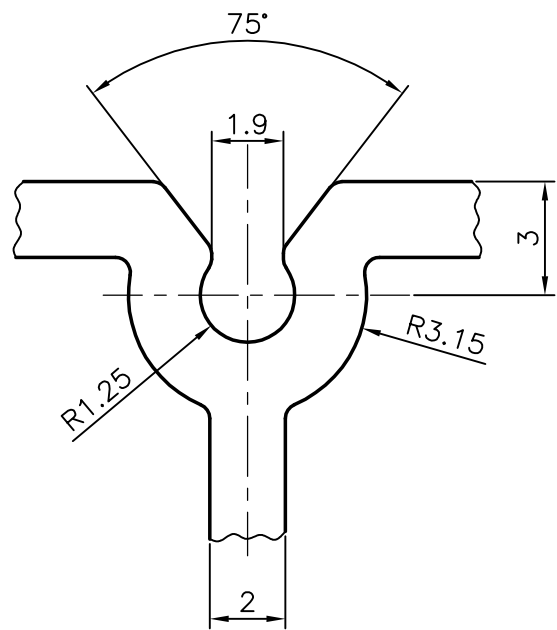


9069

27469



DETAIL AT 'A'



DETAIL AT 'B'

TOLERANCES ON STRAIGHTNESS, FLATNESS, LENGTHS,
TWIST & ANGULARITY WILL BE AS PER IS: 6477-1983



SYMBOL OF QUALITY
AN ISO 9001 COMPANY

JINDAL ALUMINIUM LTD.
BANGALORE-560073 (INDIA)

	NAME	DATE
DRAWN	J.P.KAUSHIK	21-08-2006
CHECKED		
APPROVED		
SCALE		1:1
AREA mm ²		516.22
PERIMETER mm.		248.218
WEIGHT kg/m		1.394
DRAWING No.	SECTION No.	
6069	6069	
27469	27469	

1. ALL DIMENSIONS ARE IN mm. 2. ROUND OFF ALL SHARP CORNERS WITH 0.40 mm. 3. TOLERANCES WILL BE AS PER IS:3965-1981 UNLESS OTHERWISE SPECIFIED	
PARTY'S NAME	ADVANCED WAVETRONICS & SYSTEMS, HYDERABAD
PARTY'S DRAWING No.	-
ALLOY & TEMPER	HE9 WP
DESCRIPTION	TRIPLE HOLLOW SECTION