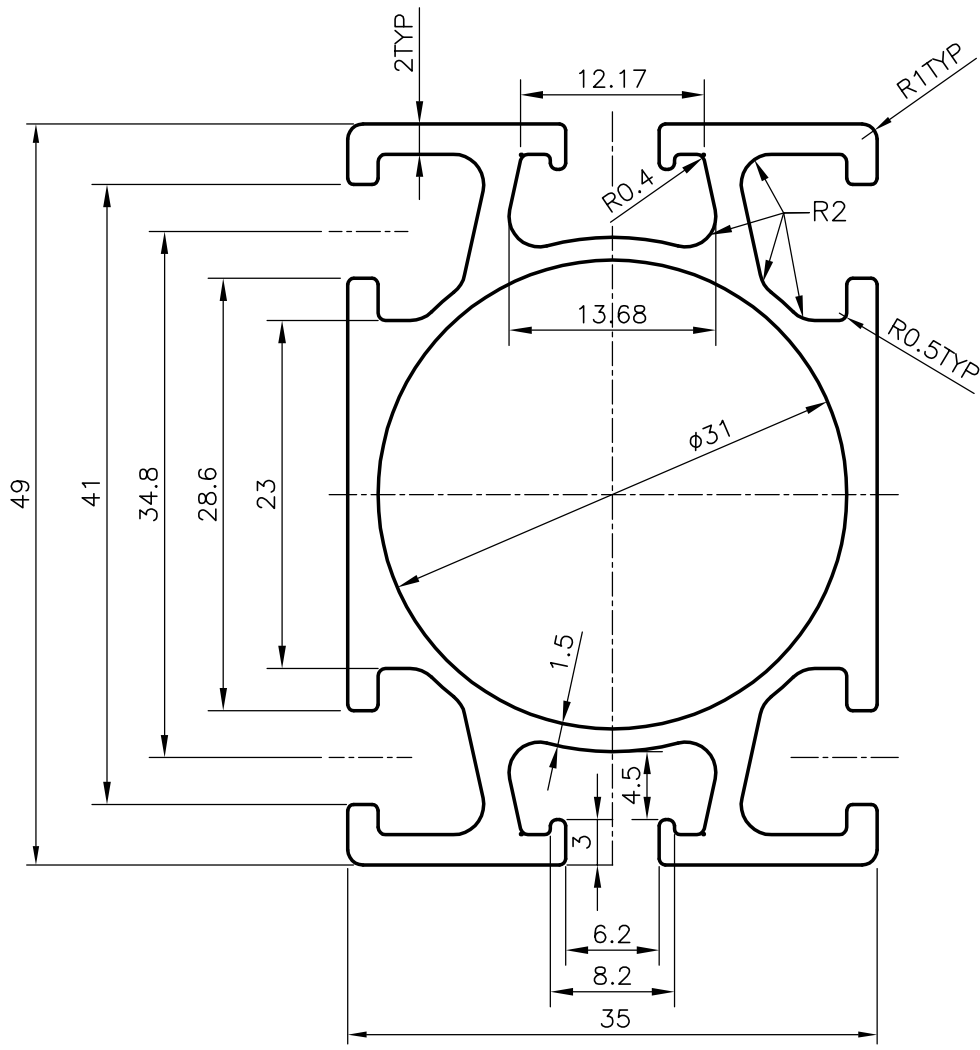
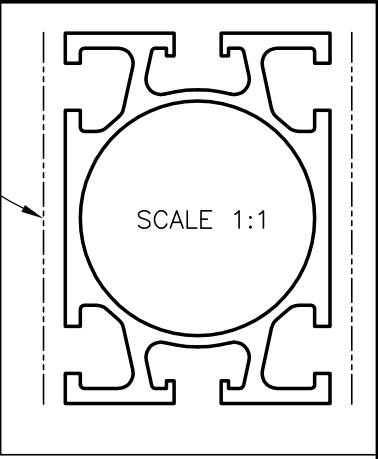



P-4491-4
S1108
27623

EXPOSED SURFACE BETTER  
SURFACE FINISH REQUIRED



GENERAL WALL THICKNESS = 2.00mm

 SYMBOL OF QUALITY AN ISO 9002 COMPANY	<b>JINDAL ALUMINIUM LTD.</b> BANGALORE-560073 (INDIA)	NAME		DATE
		DRAWN	RAGHAVENDRA	13-01-2004
1. ALL DIMENSIONS ARE IN mm. 2. ROUND OFF ALL SHARP CORNERS WITH 0.40 mm. 3. TOLERANCES WILL BE AS PER IS:6477-1983 UNLESS OTHERWISE SPECIFIED		CHECKED		
		APPROVED		
PARTY'S NAME S P ENGINEERS, MUMBAI		SCALE		2:1
		AREA mm <sup>2</sup>		479.72
PARTY'S DRAWING No. SP-08/R1		PERIMETER mm.		318.2
		WEIGHT kg/m		1.295
ALLOY & TEMPER HE9 WP		DRAWING No.		SECTION No.
		P-4491-4		-
DESCRIPTION CYLINDER CHANNEL-φ31 ID		S1108		S1108
		27623		27623