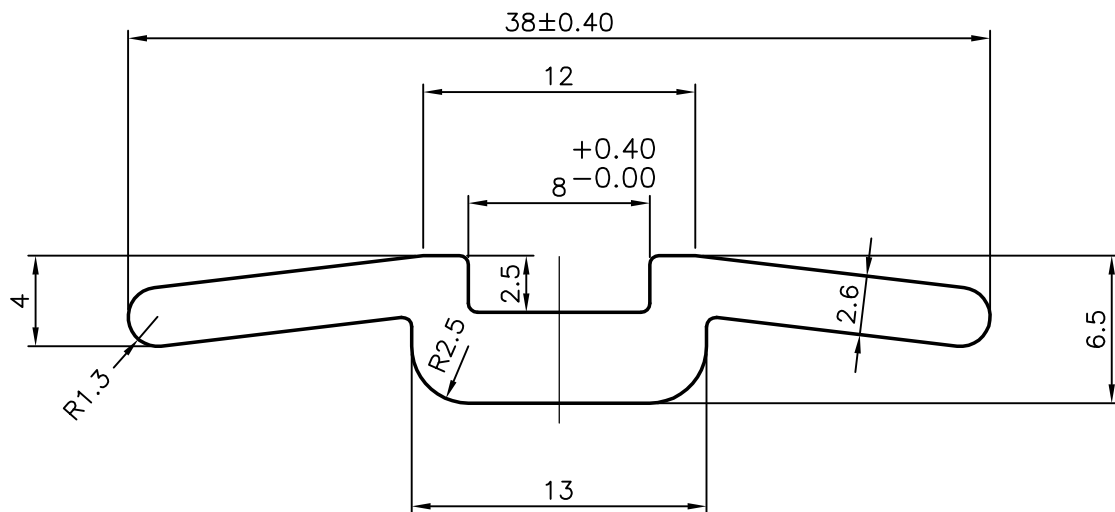
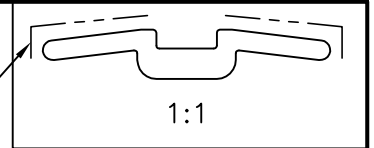


P-5769

S1566

27648

GOOD SURFACE FINISH REQUIRED



SYMBOL OF QUALITY  
AN ISO 9001 COMPANY

**JINDAL ALUMINIUM LTD.**  
BANGALORE-560073 (INDIA)

|          | NAME       | DATE       |
|----------|------------|------------|
| DRAWN    | MALINGAPPA | 01-08-2005 |
| CHECKED  |            |            |
| APPROVED |            |            |

1. ALL DIMENSIONS ARE IN mm.
2. ROUND OFF ALL SHARP CORNERS WITH 0.50 mm.
3. TOLERANCES WILL BE AS PER IS:3965-1981 UNLESS OTHERWISE SPECIFIED

|                      |         |
|----------------------|---------|
| SCALE                | 3:1     |
| AREA mm <sup>2</sup> | 125.837 |
| PERIMETER mm.        | 88.652  |
| WEIGHT kg/m          | 0.340   |

|                     |  |
|---------------------|--|
| PARTY'S NAME        | CONNECT INTERNATIONAL PVT. LTD., NOIDA (U.P) |
| PARTY'S DRAWING No. | AS PER DRAWING, REV. A                       |
| ALLOY & TEMPER      | 6063 T6                                      |
| DESCRIPTION         | JOINT (38 mm)                                |

| DRAWING No. | SECTION No. |
|-------------|-------------|
| P-5769      | -           |
| S1566       | S1566       |
| 27648       | 27648       |
|             |             |
|             |             |