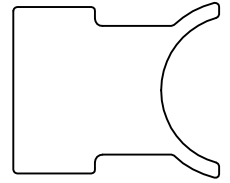


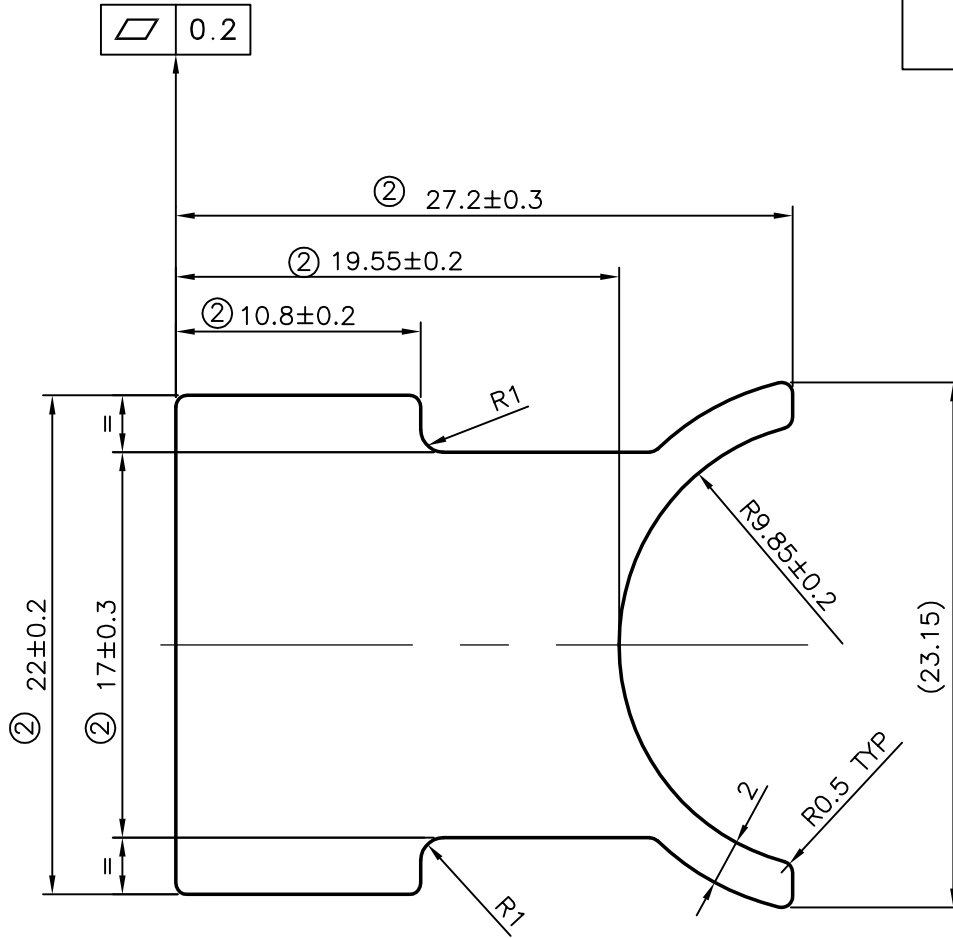
P-6940-1

27708

-



SCALE 1:1



- 1. ALL UNSPECIFIED RADII TO BE R 0.5mm
- ② 2. FLATNESS = ±0.2 mm

ISSUE - 2

DIMENSIONS CHANGED FROM 26.8 TO 27.2±0.3, 19.15 TO 19.55±0.2, 10.4 TO 10.8±0.2 AND TOLERANCES ADDED ON 22±0.2 & 17±0.3 AND FLATNESS ADDED WEIGHT ALSO CHANGED FROM 1.138 kg/m TO 1.162 kg/m



SYMBOL OF QUALITY
AN ISO 9001 COMPANY

JINDAL ALUMINIUM LTD.
BANGALORE-560073 (INDIA)

	NAME	DATE
DRAWN	PRASANNA.H	13-05-2008
CHECKED		
APPROVED		

SCALE	3:1
AREA mm ²	430.435
PERIMETER mm.	111.176
WEIGHT kg/m	1.162 ②

DRAWING No.	SECTION No.
P-6940-1	-
27708	27708-ISSUE-2

1. ALL DIMENSIONS ARE IN mm. 2. ROUND OFF ALL SHARP CORNERS WITH 0.5 mm. 3. TOLERANCES WILL BE AS PER IS:3965-1981 UNLESS OTHERWISE SPECIFIED	
PARTY'S NAME	SUBROS LIMITED., NOIDA (UTTAR PRADESH)
PARTY'S DRAWING No.	646172-4330 (600007-0500-0-L)
ALLOY & TEMPER	3103 1.1% Mn, 0.5% Cu (REST Al.) 'O'
DESCRIPTION	TUBE CONNECTOR