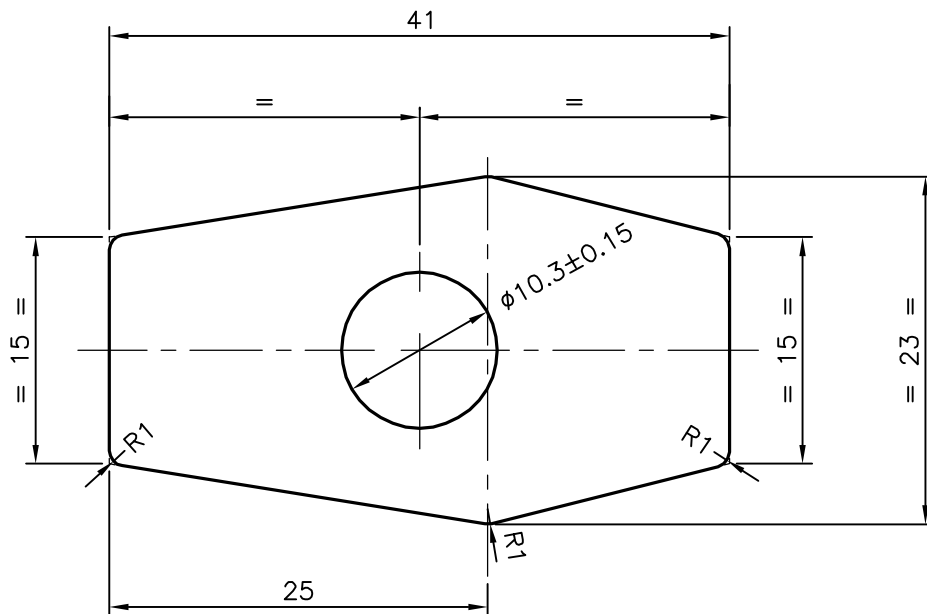
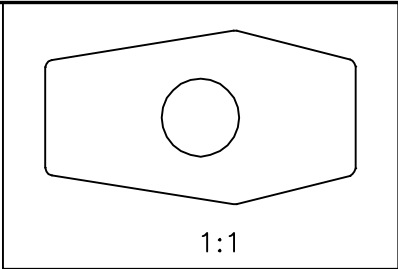



P-5619
S1539
27713



ISSUE-2 :-

I.D. DIMENSION & TOLERANCE CHANGED FROM $\phi 10 \pm 0.20$ TO $\phi 10.3 \pm 0.15$ mm
AS PER CUSTOMER REQUIREMENT

WEIGHT ALSO CHANGED FROM 1.892 TO 1.879 kg/m

 SYMBOL OF QUALITY AN ISO 9001 COMPANY	JINDAL ALUMINIUM LTD. BANGALORE-560073 (INDIA)	NAME		DATE
		DRAWN	J.P.KAUSHIK	17-03-2015
1. ALL DIMENSIONS ARE IN mm. 2. ROUND OFF ALL SHARP CORNERS WITH 0.40 mm. 3. TOLERANCES WILL BE AS PER IS:6477-1983 UNLESS OTHERWISE SPECIFIED		CHECKED		
		APPROVED	S.S.GARG	24-03-2015
PARTY'S NAME		SCALE		2:1
		AREA mm ²		695.963
PARTY'S DRAWING No.		PERIMETER mm.		112.572
		WEIGHT kg/m		1.879
ALLOY & TEMPER		DRAWING No.		SECTION No.
		P-5619		-
DESCRIPTION		S1539		S1539
		27713		27713(ISSUE-2)
MISCELLANEOUS SECTION				