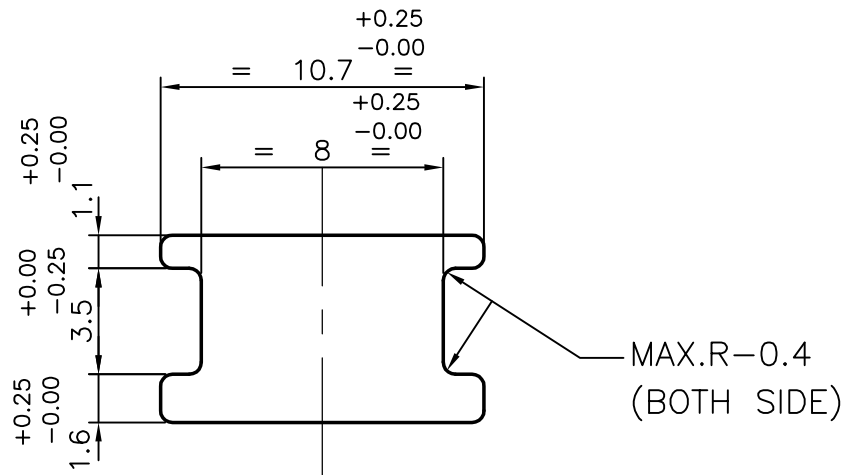
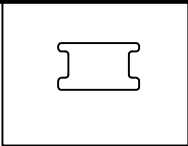



P-5908-1  
S1627  
27731



1. FLATNESS:-  $\pm 0.5$  mm
2. STRAIGHTNESS:-  $\pm 1.0$  mm / M

 SYMBOL OF QUALITY AN ISO 9001 COMPANY	<b>JINDAL ALUMINIUM LTD.</b> BANGALORE-560073 (INDIA)	DRAWN	NAME	DATE
		CHECKED	J.P.KAUSHIK	05-12-2005
1. ALL DIMENSIONS ARE IN mm. 2. ROUND OFF ALL SHARP CORNERS WITH 0.40 mm. 3. TOLERANCES WILL BE AS PER IS:3965-1981 UNLESS OTHERWISE SPECIFIED		APPROVED		
		SCALE		4:1
PARTY'S NAME ADELTA OPTEC, YAMUNANAGAR		AREA mm <sup>2</sup>		56.753
		PERIMETER mm.		37.14
PARTY'S DRAWING No. AOD-87		WEIGHT kg/m		0.153
		DRAWING No.		SECTION No.
ALLOY & TEMPER 6063 T6		P-5908-1		-
		S1627		S1627(ISSUE-2)
DESCRIPTION MECHANICAL STAGE LONG SLIDE		27731		27731