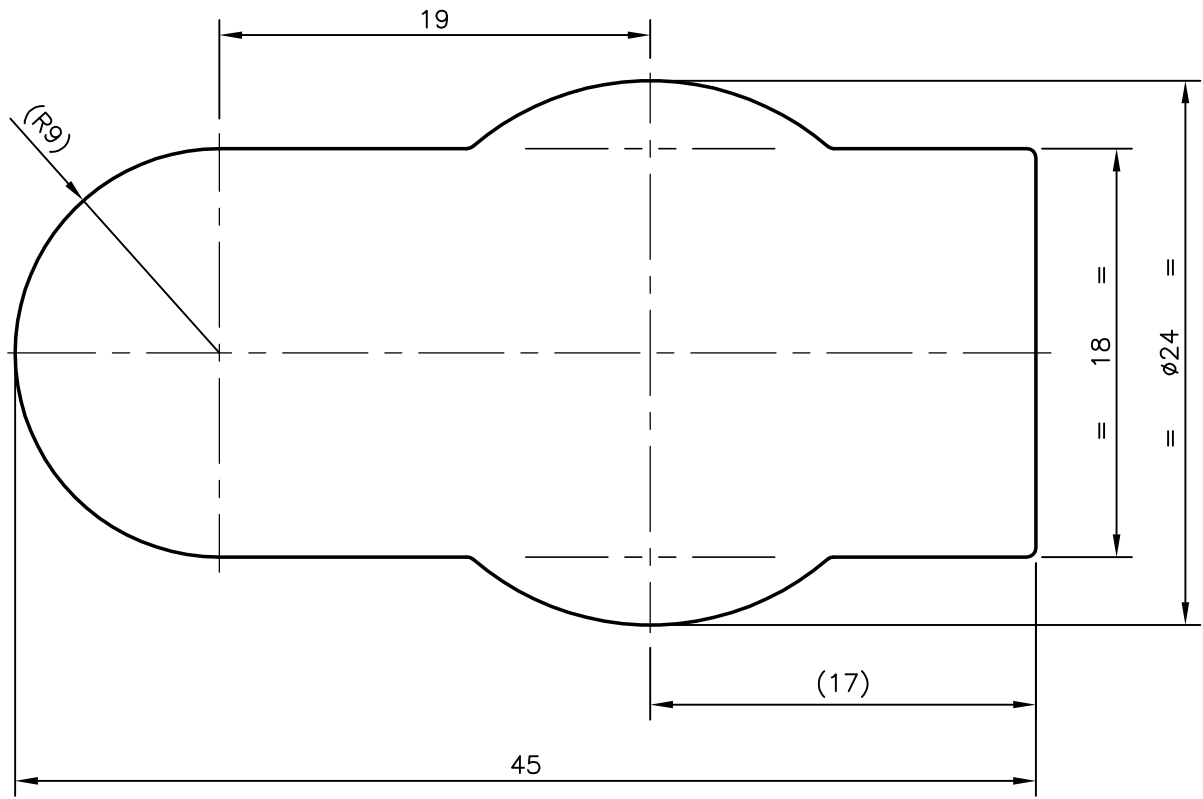
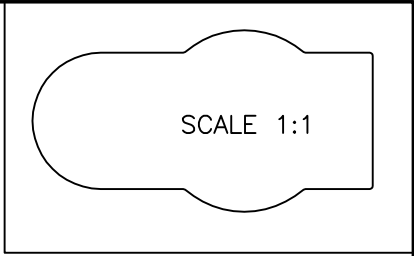


P-7686

27748



JINDAL ALUMINIUM LTD.
 BANGALORE-560073 (INDIA)

	NAME	DATE
DRAWN	PRASANNA.H	28-11-2007
CHECKED		
APPROVED		

1. ALL DIMENSIONS ARE IN mm.
2. ROUND OFF ALL SHARP CORNERS WITH 0.40 mm.
3. TOLERANCES WILL BE AS PER IS:3965-1981 UNLESS OTHERWISE SPECIFIED

SCALE	3:1
AREA mm ²	840.453
PERIMETER mm.	120.821
WEIGHT kg/m	2.269

PARTY'S NAME GLOBAL AUTOTECH LTD., NOIDA

DRAWING No.	SECTION No.
P-7686	-
27748	27748

PARTY'S DRAWING No. TC-EX/FORG-045/REV-01

ALLOY & TEMPER 65032 WP

DESCRIPTION TUBE CONNECTOR SECTION