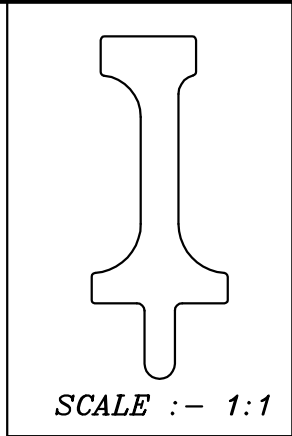
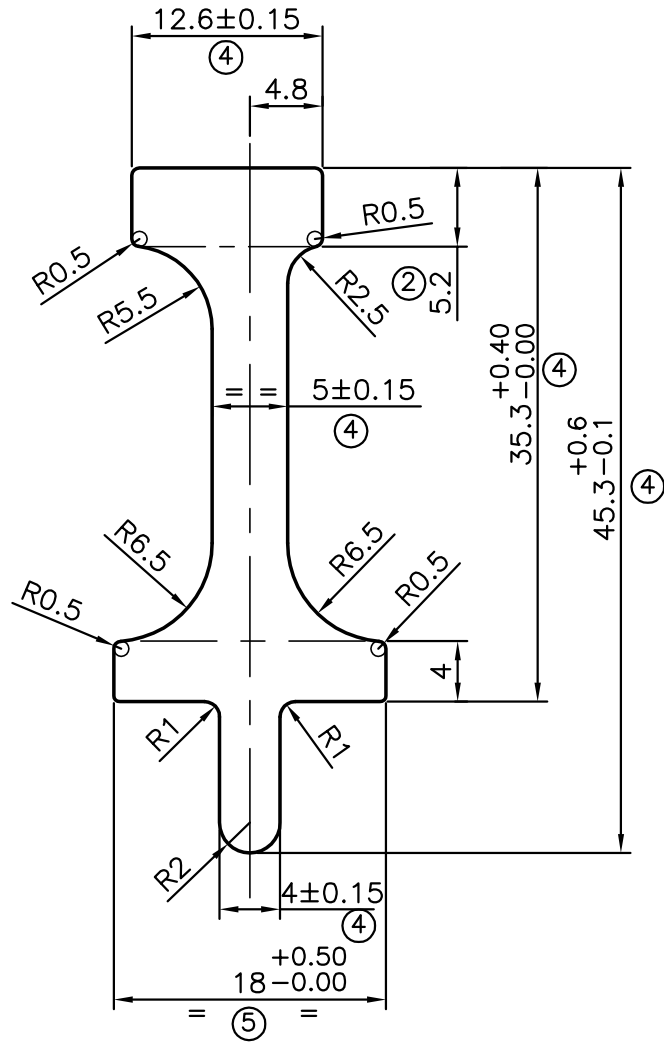


P-6521-1

S1797

27791




**NOTE:- CUTOMER REQUEST**  
PLEASE MAINTAIN DIMENSION  
12.6 & 35.3 AT MEAN TO AVOID  
FITMENT ISSUE.

**ISSUE (2) :-**  
DIMENSION CHANGED FROM 3.20 mm TO 5.20 mm  
AS PER CUSTOMER REQUIRMENT AND WEIGHT ALSO  
CHANGED FROM 0.855 kg/m TO 0.896 kg/m

**ISSUE (3):-**  
TOLERANCE ADDED ON 45.3 ±0.46,  
4 ±0.2 & 5 ±0.2.  
AS PER CUSTOMER REQUIREMENT.  
AS PER E-MAIL DATED 17/05/2013.

**ISSUE (4):-**  
TOLERANCE CHANGED ON DIMENSIONS :-  
12.6±0.20 TO 12.6±0.15  
5±0.2 TO 5±0.15  
4±0.2 TO 4±0.15  
35.3<sup>+0.5</sup>-0.0 TO 35.3<sup>+0.4</sup>-0.0  
45.3±0.46 TO 45.3<sup>+0.6</sup>-0.1  
AS PER CUSTOMER'S REQUIREMENT.

**ISSUE (5):-**  
TOLERANCE REVERT BACK <sup>+0.5</sup>-0.00 ON  
DIMENSION 18 mm.

 SYMBOL OF QUALITY AN ISO 9001 COMPANY	<b>JINDAL ALUMINIUM LTD.</b> BANGALORE-560073 (INDIA)	DRAWN	NAME	DATE
		CHECKED	PARVESH	31-05-2013
1. ALL DIMENSIONS ARE IN mm. 2. ROUND OFF ALL SHARP CORNERS WITH 0.40 mm. IS:3965-1981		APPROVED	S.S.GARG	04-06-2013
		SCALE		2:1
PARTY'S NAME SUBROS LIMITED, NOIDA (U.P.)		AREA mm <sup>2</sup>		331.709
		PERIMETER mm.		128.731
PARTY'S DRAWING No. 647782-0830/REV-a (600007-0490-0-L)		WEIGHT kg/m		0.896
		DRAWING No.	SECTION No.	
ALLOY & TEMPER 3103 "M"		P-6521-1		-
		S1797	S1797-ISSUE-2	
DESCRIPTION BRACKET		27791		27791-ISSUE-5