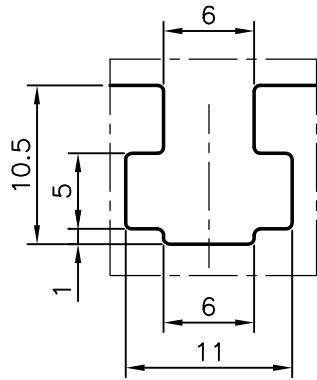


P-6451-1

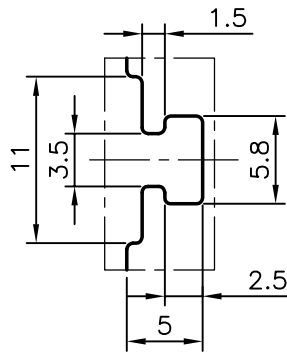
S1791

X697

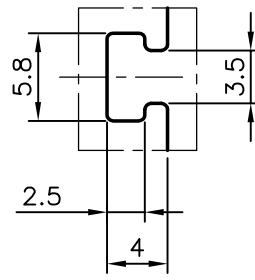
27808



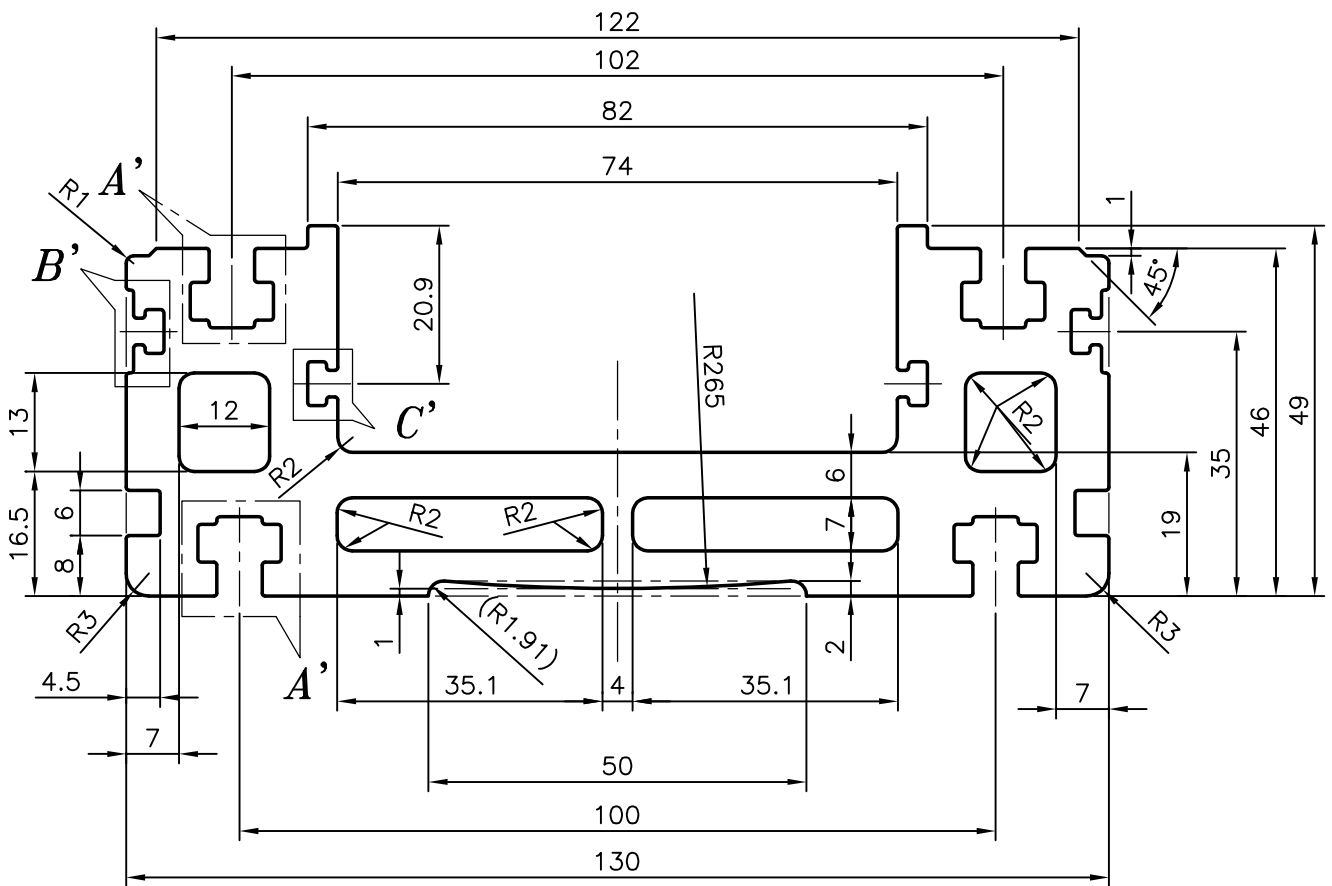
DETAIL-A
SCALE:-2:1
4 PLACES



DETAIL-B
SCALE:-2:1
2 PLACES



DETAIL-C
SCALE:-2:1
2 PLACES



SYMBOL OF QUALITY
AN ISO 9001 COMPANY

JINDAL ALUMINIUM LTD.
BANGALORE-560073 (INDIA)

	NAME	DATE
DRAWN	MAHALINGAPPA	30-06-2006
CHECKED		
APPROVED		

- ALL DIMENSIONS ARE IN mm.
- ROUND OFF ALL SHARP CORNERS WITH 0.40 mm.
- TOLERANCES WILL BE AS PER IS:6477-1983 UNLESS OTHERWISE SPECIFIED

SCALE	1:1
AREA mm ²	2631.946
PERIMETER mm.	592.979
WEIGHT kg/m	7.106

PARTY'S NAME OPTIMA ENGINEERING SYSTEMS, MUMBAI

DRAWING No. SECTION No.

PARTY'S DRAWING No. OES 37

P-6451-1 -

ALLOY & TEMPER HE9 WP

S1791 S1791

DESCRIPTION MISC. SECTION (LMG 20 EXT)

X697 X697

27808 27808