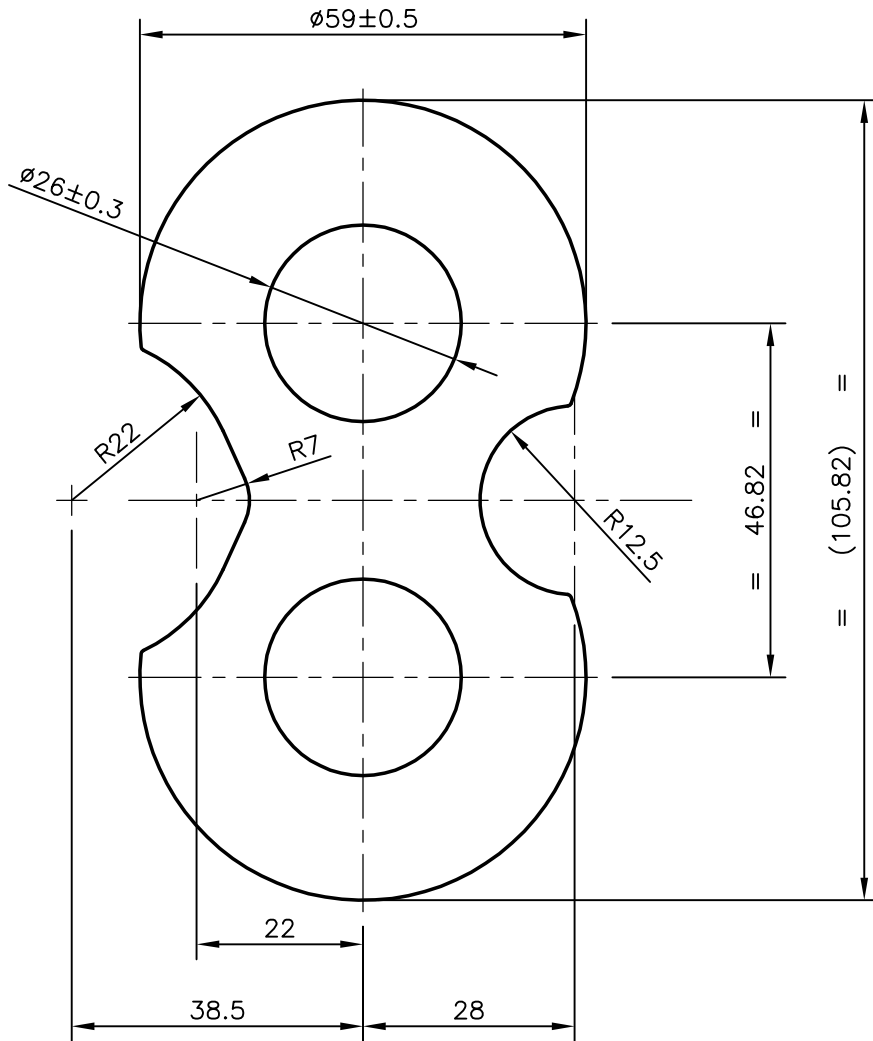


P-7265-2


S2022

27836



NOTE:-

1. BREAK EDGES WITH 0.50 mm RADIUS
2. TOLERANCE ON TWIST & BEND TO BE 1.70 mm/m

 SYMBOL OF QUALITY AN ISO 9001 COMPANY	<b>JINDAL ALUMINIUM LTD.</b> BANGALORE-560073 (INDIA)	NAME		DATE
		DRAWN	PRASANN.H	14-06-2007
1. ALL DIMENSIONS ARE IN mm. 2. ROUND OFF ALL SHARP CORNERS WITH 0.50 mm. 3. TOLERANCES WILL BE AS PER IS:6477-1983 UNLESS OTHERWISE SPECIFIED		CHECKED		
		APPROVED		
PARTY'S NAME VICKERS SYSTEMS INTERNATIONAL LTD., PUNE		SCALE		1:1
		AREA mm <sup>2</sup>		3748.034
PARTY'S DRAWING No. 5995676-001/REV-C		PERIMETER mm.		303.427
		WEIGHT kg/m		10.120
ALLOY & TEMPER 6351 T6 HARDNESS 90-110 BHN		DRAWING No.		P-7265-2
		SECTION No.		-
DESCRIPTION MISC. SECTION		S2022		S2022
		27836		27836