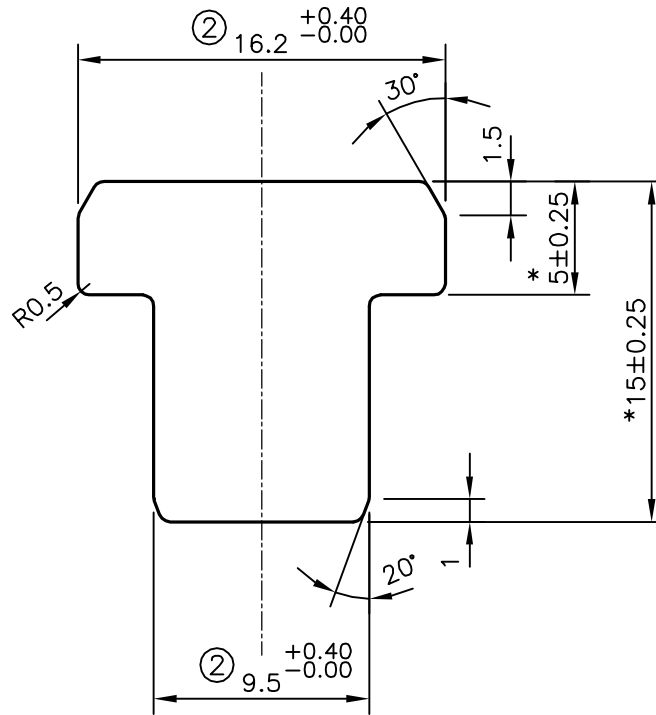
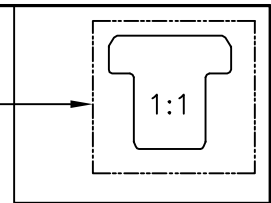


P-9874-1
S2489
27856

EXPOSED SURFACE




UNSPECIFIED RADII 0.5 mm

ISSUE-2

DIMENSIONS CHANGED FROM 16.1 TO 16.2 mm & 9.4 TO 9.5 mm

WEIGHT ALSO CHANGED FROM 0.466 kg/m TO 0.471 kg/m

*** = MARKED DIMENSIONS ARE CRITICAL
THESE DIMENSIONS MUST BE STRICTLY WITHIN TOLERANCE.**

 SYMBOL OF QUALITY AN ISO 9001 COMPANY	JINDAL ALUMINIUM LTD. BANGALORE-560073 (INDIA)	NAME		DATE
		DRAWN	J.P.KAUSHIK	29-09-2016
		CHECKED		
		APPROVED	B.NATARAJ	21-10-2016
1. ALL DIMENSIONS ARE IN mm. 2. ROUND OFF ALL SHARP CORNERS WITH 0.50 mm. 3. TOLERANCES WILL BE AS PER IS:3965-1981 UNLESS OTHERWISE SPECIFIED		SCALE		3:1
		AREA mm ²	174.261	
		PERIMETER mm.	59.372	
		WEIGHT kg/m	0.471	
		DRAWING No.	SECTION No.	
PARTY'S NAME	SAS PRECISION ENGINEERING PVT. LTD., BANGALORE	P-9874-1	-	
PARTY'S DRAWING No.	ANC21923	S2489	S2489	
ALLOY & TEMPER	6061 T6	27856	27856(ISSUE-2)	
DESCRIPTION	T-BAR-FASTENER SECTION			