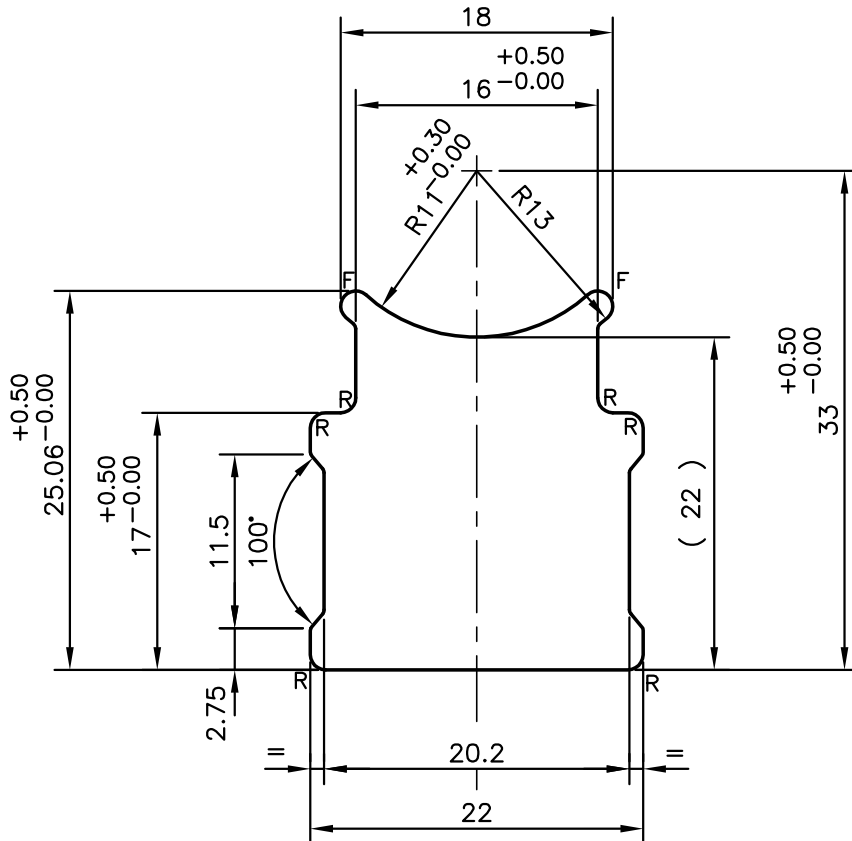


P-10114-2

S2590

27865



R= 1.0 RADII (6)  
F= FULL RADIUS (2)



SYMBOL OF QUALITY  
AN ISO 9001 COMPANY

**JINDAL ALUMINIUM LTD.**  
BANGALORE-560073 (INDIA)

	NAME	DATE
DRAWN	J.P.KAUSHIK	08-07-2010
CHECKED		
APPROVED	S.S.GARG	14-07-2010
SCALE		2:1
AREA mm <sup>2</sup>		454.979
PERIMETER mm.		96.168
WEIGHT kg/m		1.228
DRAWING No.	SECTION No.	
P-10114-2	-	
S2590	S2590	
27865	27865	

1. ALL DIMENSIONS ARE IN mm.
2. ROUND OFF ALL SHARP CORNERS WITH 0.4 mm.
3. TOLERANCES WILL BE AS PER IS:3965-1981 UNLESS OTHERWISE SPECIFIED

PARTY'S NAME	PRECISION COMPONENTS INDIA, MOHALI
PARTY'S DRAWING No.	EC096-65431 REV. 8
ALLOY & TEMPER	6063 T6
DESCRIPTION	CONNECTOR O RING