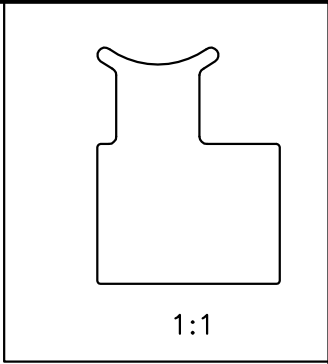
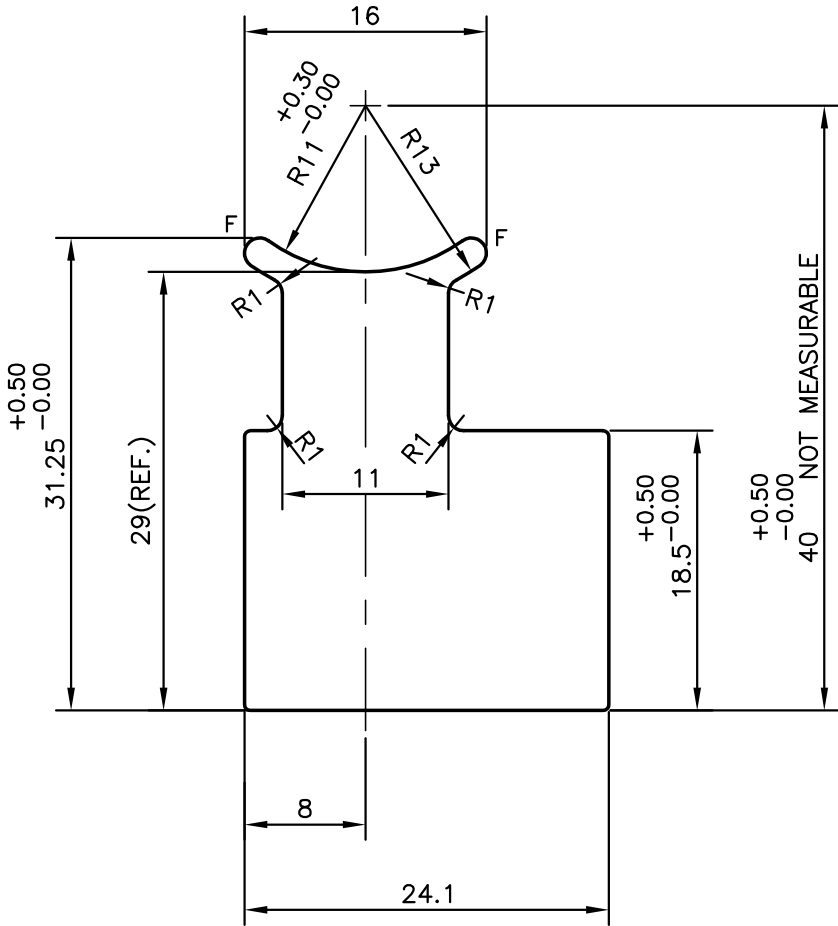


P-9191-2
S2604
27892



1:1



F= FULL RADIUS (2)



JINDAL ALUMINIUM LTD.
BANGALORE-560073 (INDIA)

	NAME	DATE
DRAWN	J.P.KAUSHIK	08-07-2010
CHECKED		
APPROVED	S.S.GARG	22-07-2010

1. ALL DIMENSIONS ARE IN mm.
2. ROUND OFF ALL SHARP CORNERS WITH 0.4 mm.
3. TOLERANCES WILL BE AS PER IS:3965-1981 UNLESS OTHERWISE SPECIFIED

SCALE	2:1
AREA mm ²	577.195
PERIMETER mm.	116.657
WEIGHT kg/m	1.558

PARTY'S NAME	PRECISION COMPONENTS INDIA, MOHALI
PARTY'S DRAWING No.	EC092-65432 REV. 6
ALLOY & TEMPER	6063 T6
DESCRIPTION	CONNECTOR O RING

DRAWING No.	SECTION No.
P-9191-2	-
S2604	S2604
27892	27892