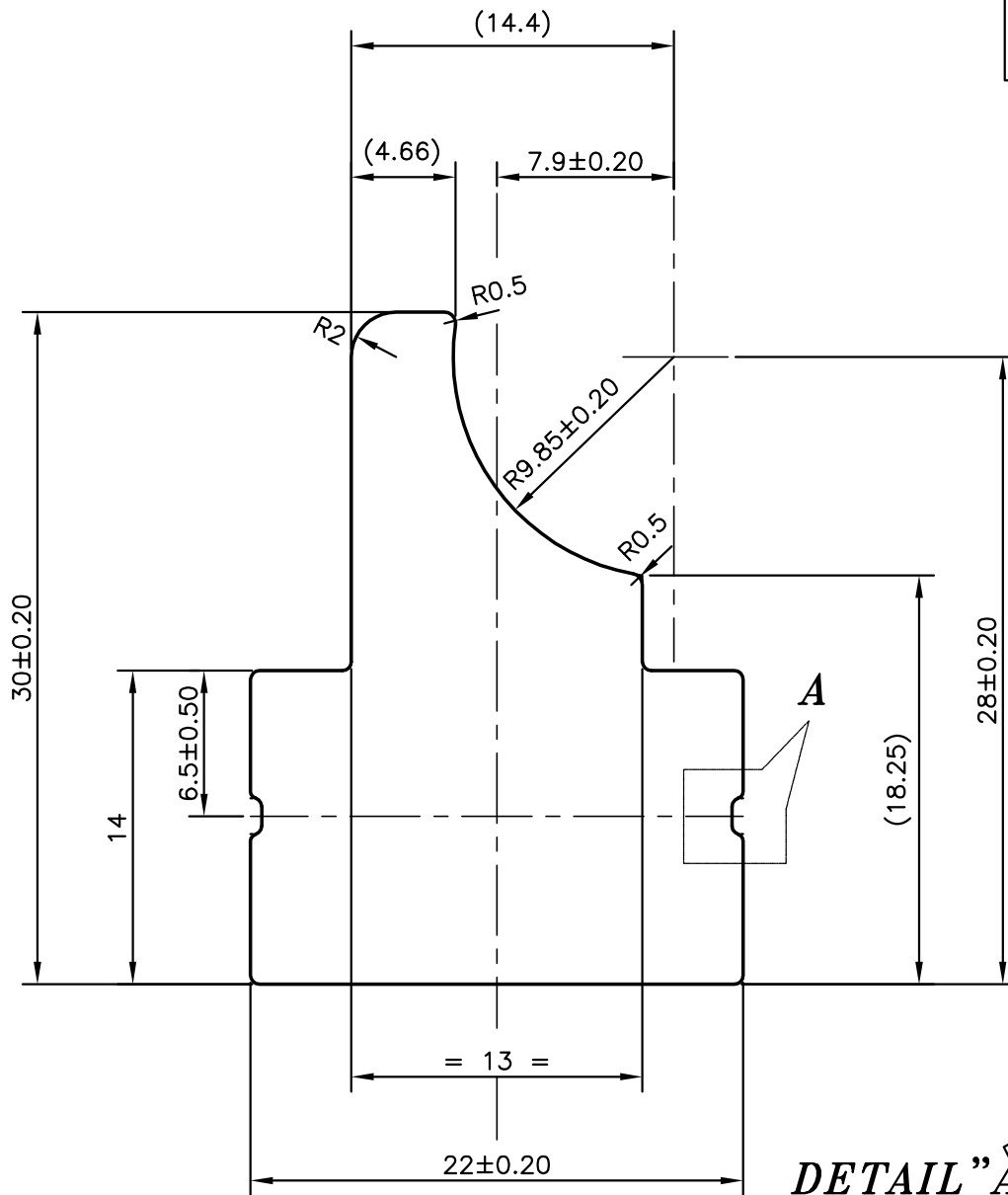
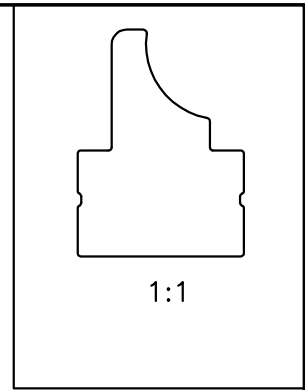
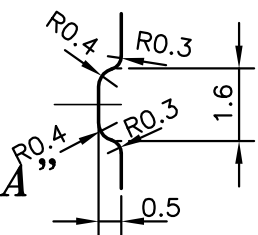



P-9905-1
S2502
27906



**DETAIL "A"**  
(6:1)



 SYMBOL OF QUALITY AN ISO 9001 COMPANY	<b>JINDAL ALUMINIUM LTD.</b> BANGALORE-560073 (INDIA)	NAME	DATE
		DRAWN	J.P.KAUSHIK 22-03-2010
		CHECKED	
		APPROVED	S.S.GARG 27-03-2010
1. ALL DIMENSIONS ARE IN mm. 2. ROUND OFF ALL SHARP CORNERS WITH 0.40 mm. 3. TOLERANCES WILL BE AS PER IS:3965-1981 UNLESS OTHERWISE SPECIFIED		SCALE	3:1
		AREA mm <sup>2</sup>	434.163
		PERIMETER mm.	98.638
		WEIGHT kg/m	1.172
PARTY'S NAME	GLOBAL AUTOTECH LTD.,NOIDA	DRAWING No.	SECTION No.
PARTY'S DRAWING No.	TC-EX-141	P-9905-1	-
ALLOY & TEMPER	3103SU (Mg-0.03,Si-0.55-0.58,Mn-1.02-1.08,Fe-0.25,Cu-0.45-0.52,Zn-0.05,Ti-0.03,Cr-0.01)	S2502	S2502
DESCRIPTION	TUBE CONNECTOR SECTION	27906	27906