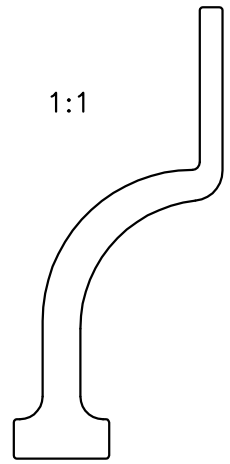
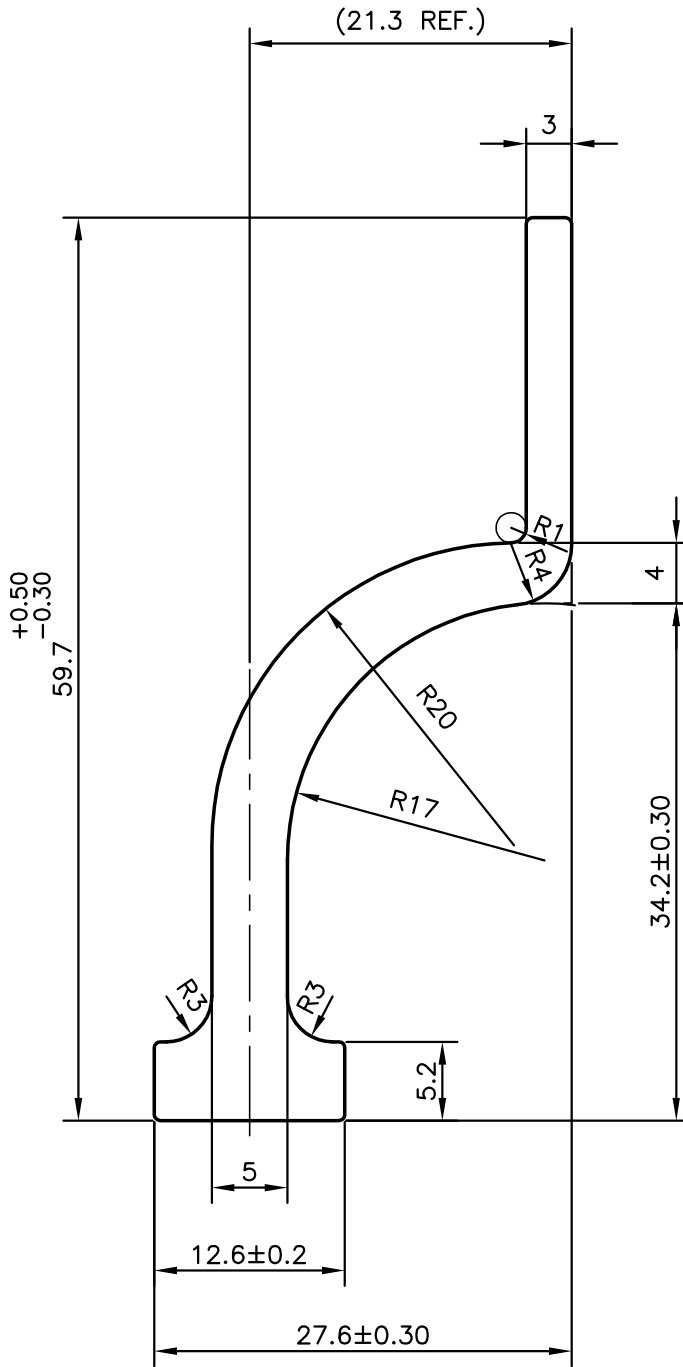


P-9614-3

S2503

27907

1:1



SYMBOL OF QUALITY
AN ISO 9001 COMPANY

JINDAL ALUMINIUM LTD.
BANGALORE-560073 (INDIA)

	NAME	DATE
DRAWN	J.P.KAUSHIK	11-03-2010
CHECKED		
APPROVED	S.S.GARG	30-03-2010
SCALE		2:1
AREA mm ²		347.217
PERIMETER mm.		160.681
WEIGHT kg/m		0.937
DRAWING No.	SECTION No.	
P-9614-3	-	
S2503	S2503	
27907	27907	

1. ALL DIMENSIONS ARE IN mm.
2. ROUND OFF ALL SHARP CORNERS WITH 0.40 mm.
3. TOLERANCES WILL BE AS PER IS:3965-1981, UNLESS OTHERWISE SPECIFIED

PARTY'S NAME	GLOBAL AUTOTECH LTD., NOIDA
PARTY'S DRAWING No.	TC-EX-126
ALLOY & TEMPER	3103SU (Mg-0.03,Si-0.55-0.58,Mn-1.02-1.08, Fe-0.25,Cu-0.45-0.52,Zn-0.05,Ti-0.03,Cr-0.01)
DESCRIPTION/END USE	BRACKET SECTION-CONNECTOR