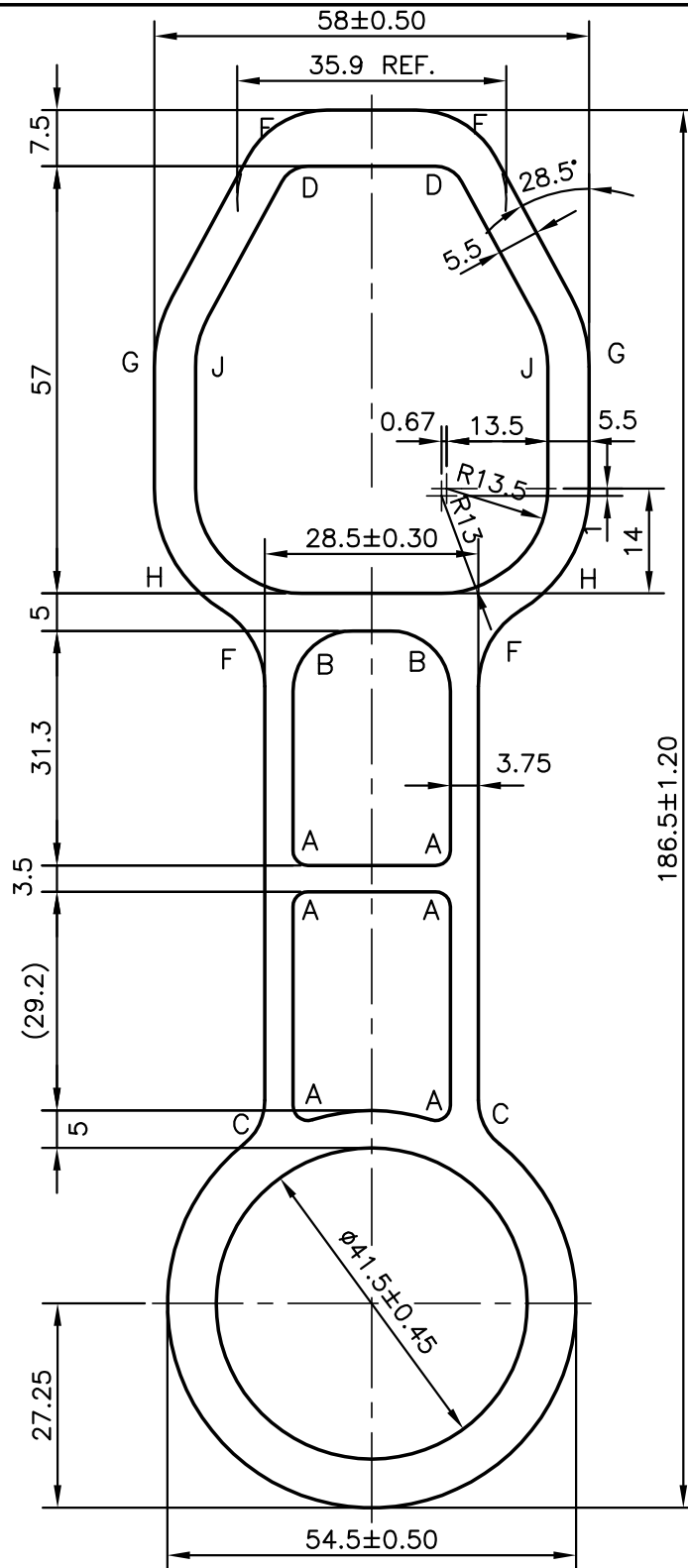


P-9818

S2481

27942



- A = RADIUS 2 (6)
- B = RADIUS 8 (2)
- C = RADIUS 7.5 (2)
- D = RADIUS 4 (2)
- E = RADIUS 13 (2)
- F = RADIUS 12 (4)
- G = RADIUS 19.5 (2)
- H = RADIUS 19.0 (2)
- J = RADIUS 14 (2)

ISSUE2 :- DRAWING MODIFIED AS PER CUSTOMER AutoCAD DRAWING
 WEIGHT ALSO CHANGED FROM 7.170 Kg/M TO 7.198 Kg/M



SYMBOL OF QUALITY
 AN ISO 9001 COMPANY

JINDAL ALUMINIUM LTD.
 BANGALORE-560073 (INDIA)

	NAME	DATE
DRAWN	J.P.KAUSHIK	11-06-2010
CHECKED		
APPROVED	S.S.GARG	23-07-2010
SCALE		1:1
AREA mm ²		2665.861
PERIMETER mm.		453.508
WEIGHT kg/m		7.198
DRAWING No.	SECTION No.	
P-9818	-	
S2481	S2481 (ISSUE-2)	
27942	27942	

- ALL DIMENSIONS ARE IN mm.
- ROUND OFF ALL SHARP CORNERS WITH 0.40 mm.
- TOLERANCES WILL BE AS PER IS:6477-1983 UNLESS OTHERWISE SPECIFIED

PARTY'S NAME	A.V. INDUSTRIES, MUMBAI
PARTY'S DRAWING No.	AVI-2697-B
ALLOY & TEMPER	HE9 WP
DESCRIPTION	MISC. TUBE