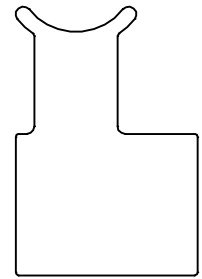


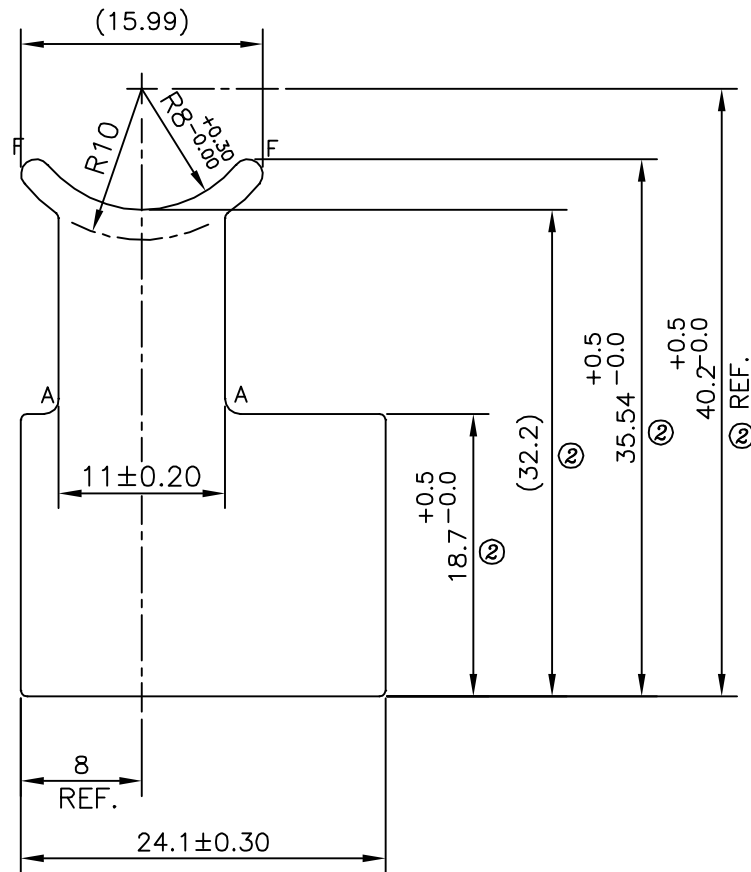
P-11574

S3222

27980



SCALE - 1:1

**ISSUE (2) :-**

DIMENSIONS CHANGED FROM :-

18.5 mm.	TO	18.7 mm.
32.0 mm.	TO	32.2 mm.
35.34 mm.	TO	35.54 mm.
40.0 mm.	TO	40.2 mm.

A = RADIUS 1 mm. (2 PLACES)
F = FULL RADIUS (2 PLACES)



SYMBOL OF QUALITY
AN ISO 9001 COMPANY

JINDAL ALUMINIUM LTD.
BANGALORE-560073 (INDIA)

	NAME	DATE
DRAWN	PARVESH	22-01-2015
CHECKED		
APPROVED	S.S.GARG	02-02-2015
SCALE		2:1
AREA mm ²		618.511
PERIMETER mm.		125.983
WEIGHT kg/m		1.670
DRAWING No.	SECTION No.	
P-11574	-	
S3222	S3222	
27980	27980 (ISSUE-2)	

- ALL DIMENSIONS ARE IN mm.
- ROUND OFF ALL SHARP CORNERS WITH 0.40 mm.
- TOLERANCES WILL BE AS PER BS:EN-755-9, UNLESS OTHERWISE SPECIFIED

PARTY'S NAME	PRECISION COMPONENTS INDIA, MOHALI
PARTY'S DRAWING No.	PCI-687 & REQUIREMENT
ALLOY & TEMPER	6063 T6
DESCRIPTION	CONNECTOR 'O' RING OUTLET