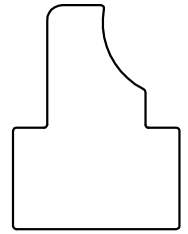


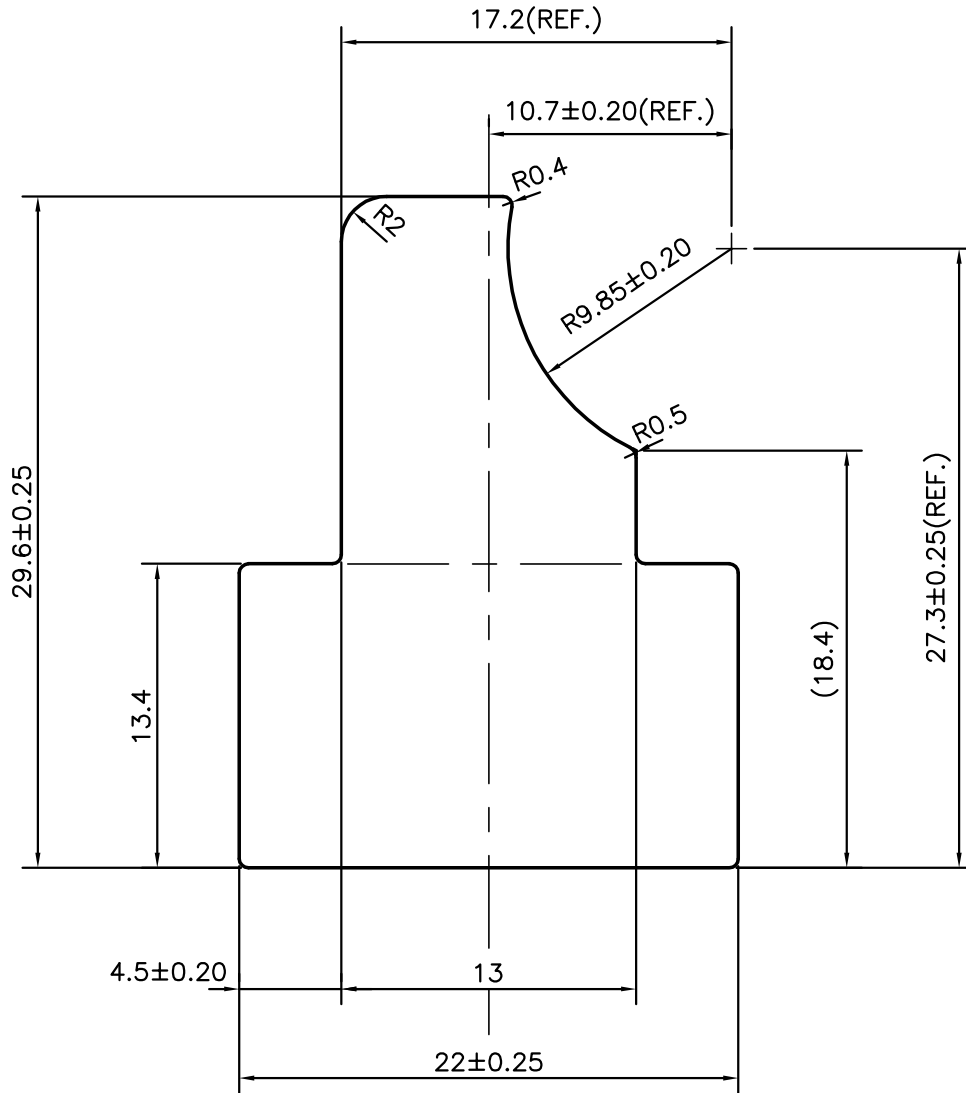
P-10636-1

S2804

27986



1:1



SYMBOL OF QUALITY  
AN ISO 9001 COMPANY

**JINDAL ALUMINIUM LTD.**  
BANGALORE-560073 (INDIA)

|                      | NAME        | DATE       |
|----------------------|-------------|------------|
| DRAWN                | J.P.KAUSHIK | 13-12-2010 |
| CHECKED              |             |            |
| APPROVED             | J.N.RAI     | 18-12-2010 |
| SCALE                |             | 3:1        |
| AREA mm <sup>2</sup> |             | 455.493    |
| PERIMETER mm.        |             | 97.836     |
| WEIGHT kg/m          |             | 1.230      |
| DRAWING No.          | SECTION No. |            |
| P-10636-1            | -           |            |
| S2804                | S2804       |            |
| 27986                | 27986       |            |

1. ALL DIMENSIONS ARE IN mm.
2. ROUND OFF ALL SHARP CORNERS WITH 0.40 mm.
3. TOLERANCES WILL BE AS PER, BS:EN-755 UNLESS OTHERWISE SPECIFIED

|                     |  |
|---------------------|--|
| PARTY'S NAME        | GLOBAL AUTOTECH LTD., NOIDA  |
| PARTY'S DRAWING No. | TC-EX-159-00   |
| ALLOY & TEMPER      | 3103SU (Mg-0.03,Si-0.55-0.58,Mn-1.02-1.08, Fe-0.25,Cu-0.45-0.52,Zn-0.05,Ti-0.03,Cr-0.01) |
| DESCRIPTION         | TUBE CONNECTOR   |