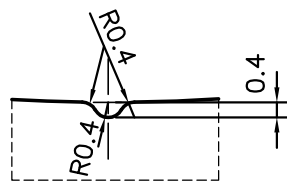


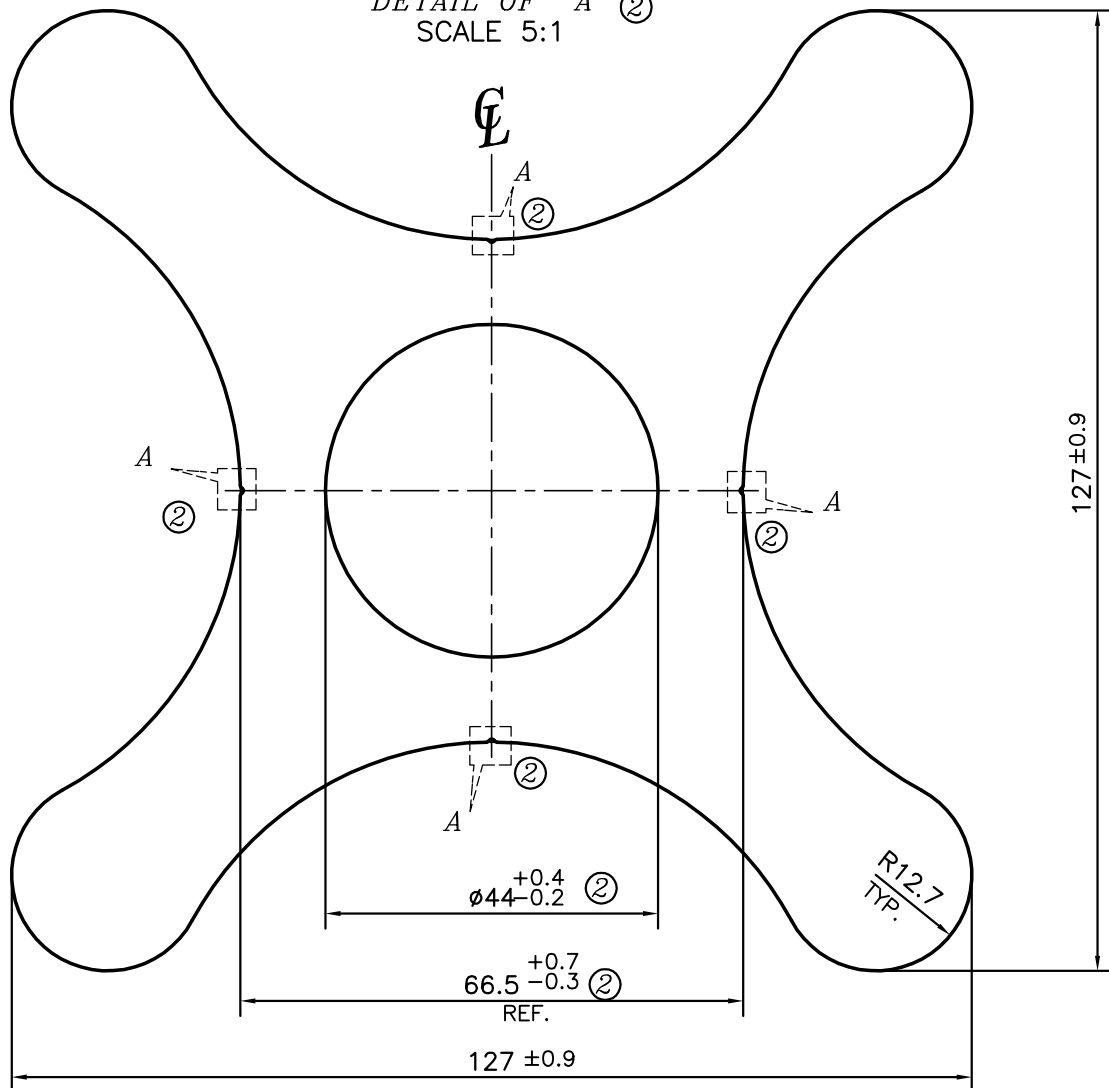
P-11935

S3461





27992



DETAIL OF "A"
SCALE 5:1



ISSUE (2) :-

-  **VEE GROOVE ADDED (4 PLACES)**
-  **DIMENSION CHANGED FROM 65.99 ± 0.5 TO $66.5^{+0.7}_{-0.3}$**
-  **TOLERANCE CHANGED ON DIMENSION**
 $\phi 44 \pm 0.45$ TO $\phi 44^{+0.4}_{-0.2}$
-  **WEIGHT ALSO CHANGED FROM**
18.358 TO 18.530 Kg/M.

1. STRAIGHTNESS=1.2mm/M
2. TWIST=1.2mm/M
3. ANGULARITY= $\pm 1.5^\circ$



SYMBOL OF QUALITY
AN ISO 9001 COMPANY

JINDAL ALUMINIUM LTD.
BANGALORE-560073 (INDIA)

	NAME	DATE
DRAWN	PARVESH	13-09-2013
CHECKED		
APPROVED	S.S.GARG	20-09-2013
SCALE		1:1
AREA mm ²		6862.975
PERIMETER mm.		577.505
WEIGHT kg/m		18.530
DRAWING No.	SECTION No.	
P-11935	-	
S3461	S3461	
27992	27992 (ISSUE-2)	

1. ALL DIMENSIONS ARE IN mm.
2. ROUND OFF ALL SHARP CORNERS WITH 0.40 mm.
3. TOLERANCES WILL BE AS PER,IS:6477-1983 UNLESS OTHERWISE SPECIFIED

PARTY'S NAME INDO ALUSYS INDUSTRIES LTD., BHIWADI

PARTY'S DRAWING No. D-5680

ALLOY & TEMPER 6005 T6

DESCRIPTION INDUSTRIAL SECTION