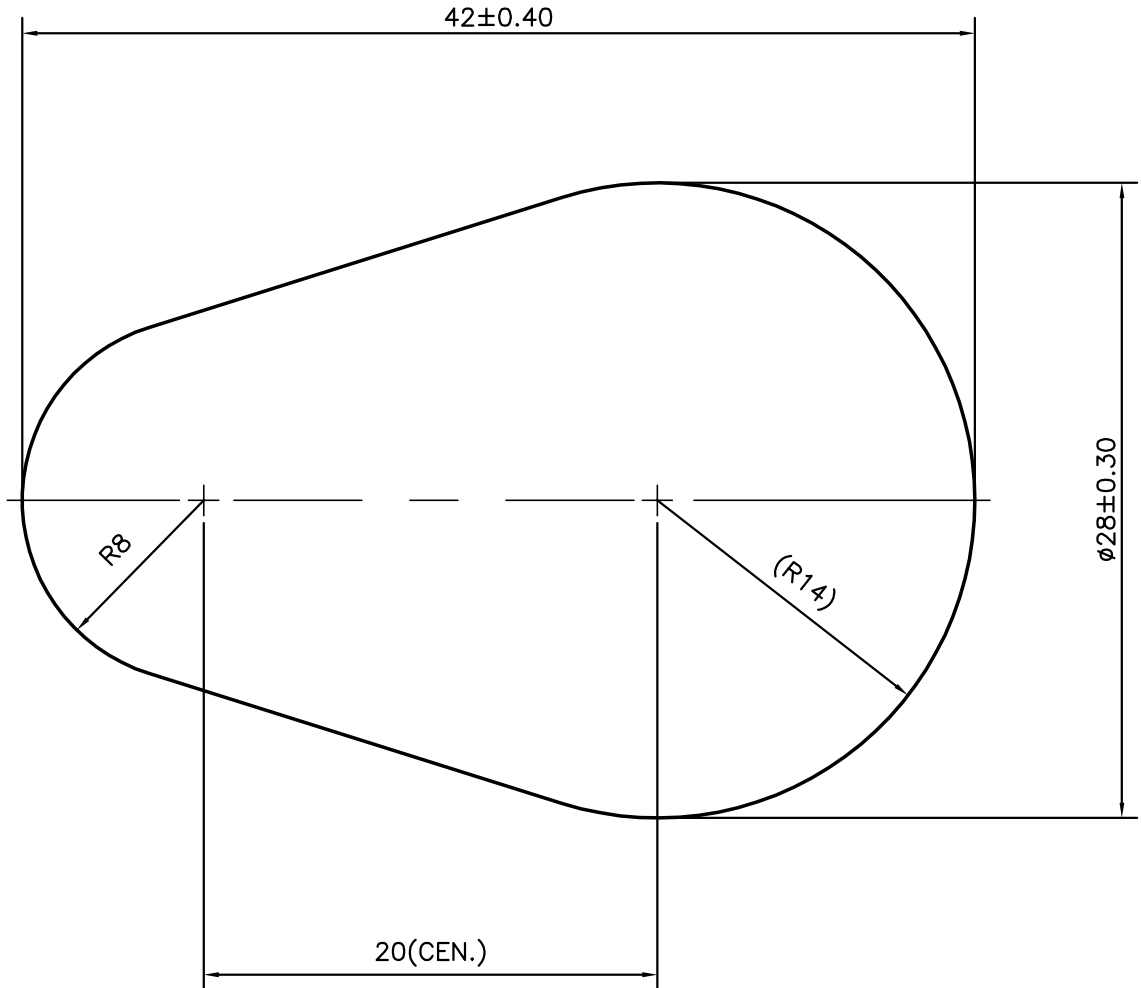
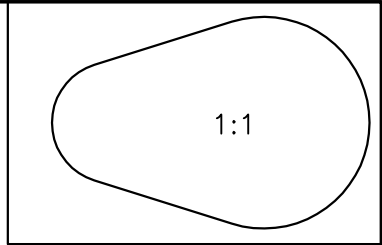


P-11586

S3236

28015



SYMBOL OF QUALITY  
AN ISO 9001 COMPANY

**JINDAL ALUMINIUM LTD.**  
BANGALORE-560073 (INDIA)

	NAME	DATE
DRAWN	J.P.KAUSHIK	05-03-2012
CHECKED		
APPROVED	S.S.GARG	28-03-2012
SCALE		3:1
AREA mm <sup>2</sup>		868.36
PERIMETER mm.		110.929
WEIGHT kg/m		2.345
DRAWING No.	SECTION No.	
P-11586		
S3236	S3236	
28015	28015	

1. ALL DIMENSIONS ARE IN mm.
2. ROUND OFF ALL SHARP CORNERS WITH 0.40 mm.
3. TOLERANCES WILL BE AS PER IS:3965-1981, UNLESS OTHERWISE SPECIFIED

PARTY'S NAME	PRECISION COMPONENTS INDIA, MOHALI
PARTY'S DRAWING No.	PCI-685
ALLOY & TEMPER	6082 T6
DESCRIPTION	MISC.SECTION (CONNECTOR)