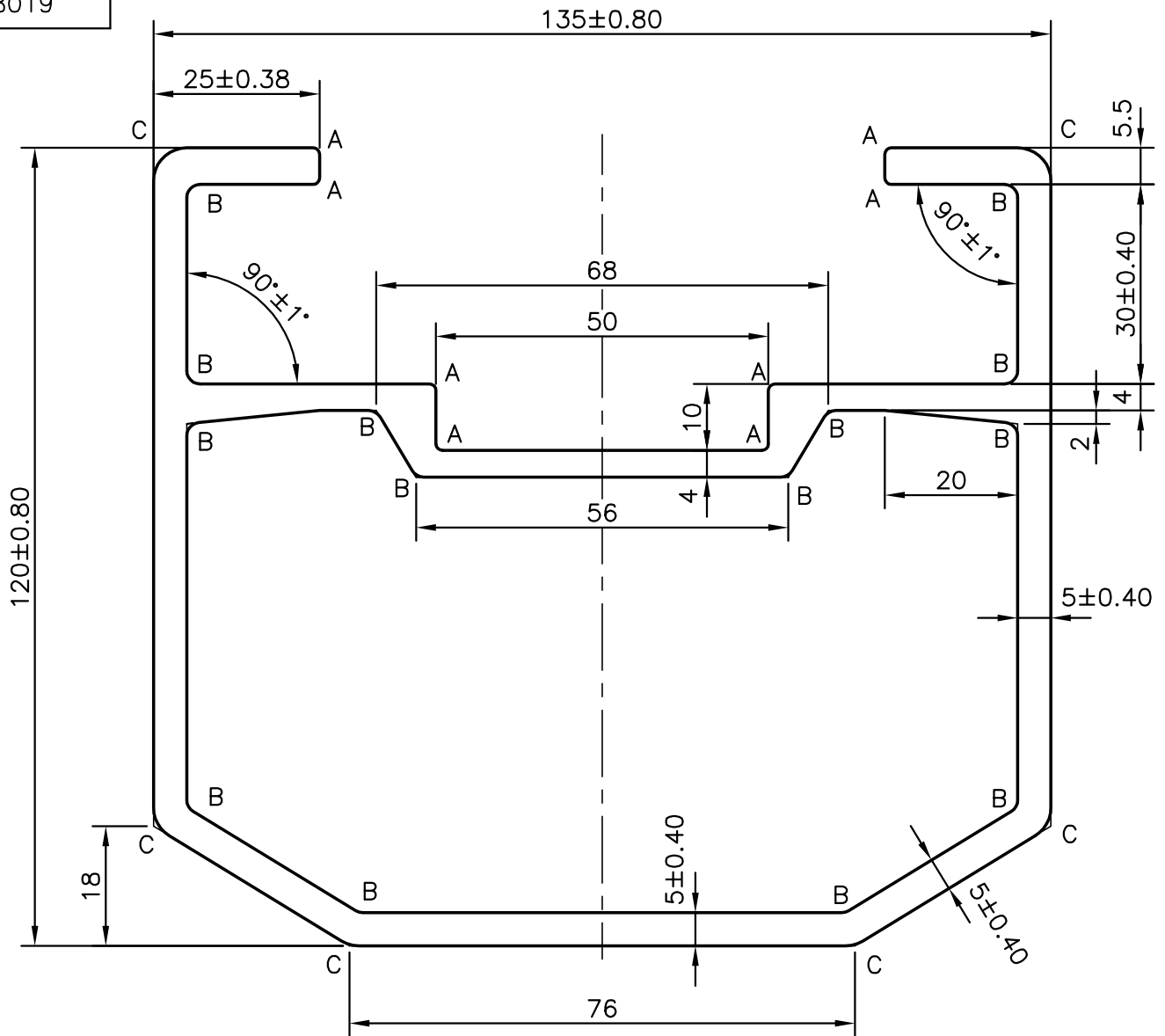


P-10890

S2899

28019



A = RADIUS 1.0 (8)

B = RADIUS 2.0 (14)

C = RADIUS 5.0 (6)



SYMBOL OF QUALITY  
AN ISO 9001 COMPANY

**JINDAL ALUMINIUM LTD.**  
BANGALORE-560073 (INDIA)

	NAME	DATE
DRAWN	R.D.Sharma	18-04-2011
CHECKED		
APPROVED	S.S.GARG	27-04-2011
SCALE		1:1
AREA mm <sup>2</sup>		2574.277
PERIMETER mm.		642.819
WEIGHT kg/m		6.951
DRAWING No.	SECTION No.	

1. ALL DIMENSIONS ARE IN mm.
2. ROUND OFF ALL SHARP CORNERS WITH 0.40 mm.
3. TOLERANCES WILL BE AS PER IS:6477-1983 UNLESS OTHERWISE SPECIFIED

PARTY'S NAME	PHILIPS ELECTRONICS INDIA LTD., NAVI MUMBAI
PARTY'S DRAWING No.	AS PER DRAWING-MRT 036
ALLOY & TEMPER	6061 T5
DESCRIPTION	C-ARM SECTION

P-10890	-
S2899	S2899
28019	28019