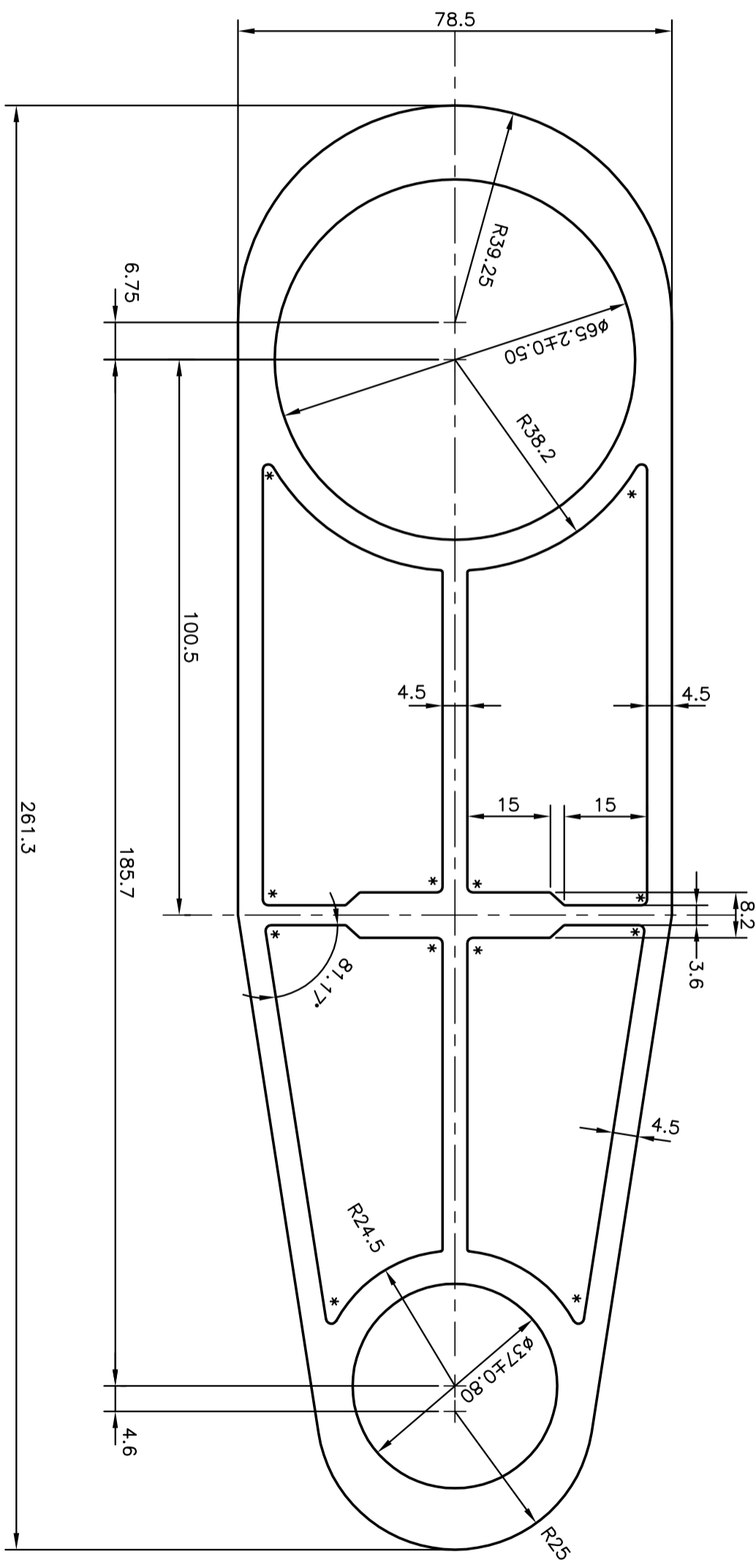



P-10956-2
S2951
28032



* = R 1.0 (12 PLACES)

 SYMBOL OF QUALITY AN ISO 9001 COMPANY	JINDAL ALUMINIUM LTD. BANGALORE-560073 (INDIA)		NAME	DATE
	1. ALL DIMENSIONS ARE IN mm. 2. ROUND OFF ALL SHARP CORNERS WITH 0.40 mm. 3. TOLERANCES WILL BE AS PER IS:6477-1983 UNLESS OTHERWISE SPECIFIED	PARTY'S NAME STORK RUBBER PRODUCTS PVT. LTD.,GURGAON	DRAWN J.P. KAUSHIK	20-05-2011
PARTY'S DRAWING No. 1003269	SCALE 1:1	CHECKED 	APPROVED S.S.GARG	07-06-2011
ALLOY & TEMPER 6082 T6	AREA mm ² 5511.799	PERIMETER mm. 598.163	WEIGHT kg/m 14.882	SECTION No.
DESCRIPTION MISC. SECTION	PARTY'S DRAWING No. 1003269	DRAWING No. P-10956-2	SECTION No. -	
	ALLOY & TEMPER 6082 T6	DRAWING No. S2951	SECTION No. 28032	
	DESCRIPTION MISC. SECTION	DRAWING No. 28032	SECTION No. 28032	