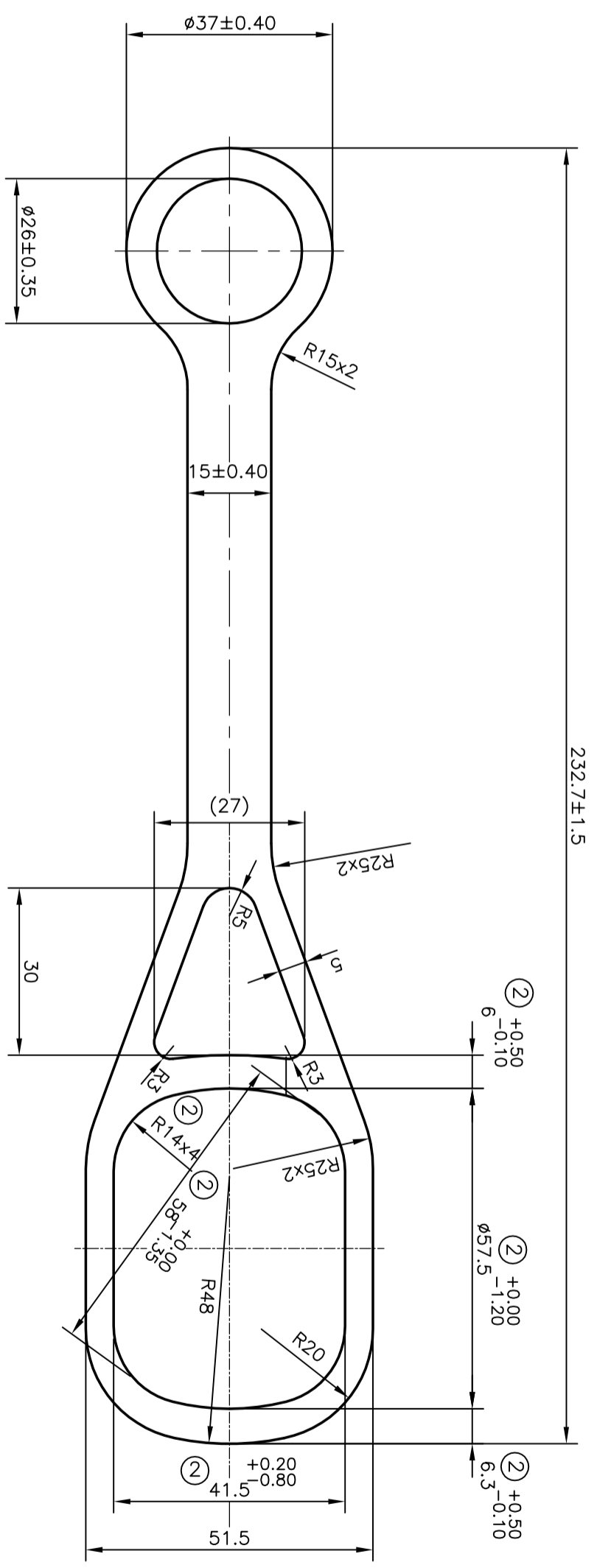


P-11065
S3004
28040

ISSUE-2:-


TOLERANCE CHANGED BY PARTY FROM $57.5^{+0.60}$ TO $57.5^{+0.00}$, $41.5^{+0.50}$ TO $41.5^{+0.20}$
 RADIUS CHANGED FROM 13.0 TO 14, & DIAGONAL DIMENSION ALSO CHANGED FROM 58.5 TO 58
 WEIGHT ALSO CHANGED FROM 9.256 kg/m TO 9.371 kg/m



PLEASE NOTE:-

IF WE ARE CHANGING TOLERANCE ON $57.5^{+0.60}$ TO $57.5^{+0.00}$ & $41.5^{+0.50}$ TO $41.5^{+0.20}$ THEN WE
 HAVE TO CHANGE TOLERANCE ON THE FOLLOWING DIMENSIONS, ALSO

- 1:- $6.3^{+0.20}$ TO $6.3^{+0.10}$
- 2:- $6.0^{+0.20}$ TO $6.0^{+0.10}$
- 3:- 58.0 TO 58 $^{+0.00}$ _{-1.35}

 JINDAL ALUMINIUM LTD. BANGALORE-560073 (INDIA)		NAME J.P.KAUSHIK DATE 19-09-2011	
SYMBOL OF QUALITY AN ISO 9001 COMPANY		CHECKED APPROVED S.S.GARG 23-09-2011	
1. ALL DIMENSIONS ARE IN mm. 2. ROUND OFF ALL SHARP CORNERS WITH 0.40 mm. 3. TOLERANCES WILL BE AS PER BS:EN-755-9 UNLESS OTHERWISE SPECIFIED			
PARTY'S NAME	AVI WORLDWIDE PVT. LTD., MUMBAI	SCALE	1:1
PARTY'S DRAWING No.	AVI-2644-A & MODIFIED S2135 SECTION	AREA mm ²	3470.641
ALLOY & TEMPER	HE9 WP	PERIMETER mm.	532.148
DESCRIPTION	MISC. SECTION	WEIGHT kg/m	9.371
		DRAWING No.	SECTION No.
		P-11065	-
		S3004	S3004(ISSUE-2
		28040	28040