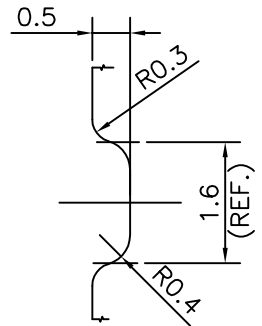
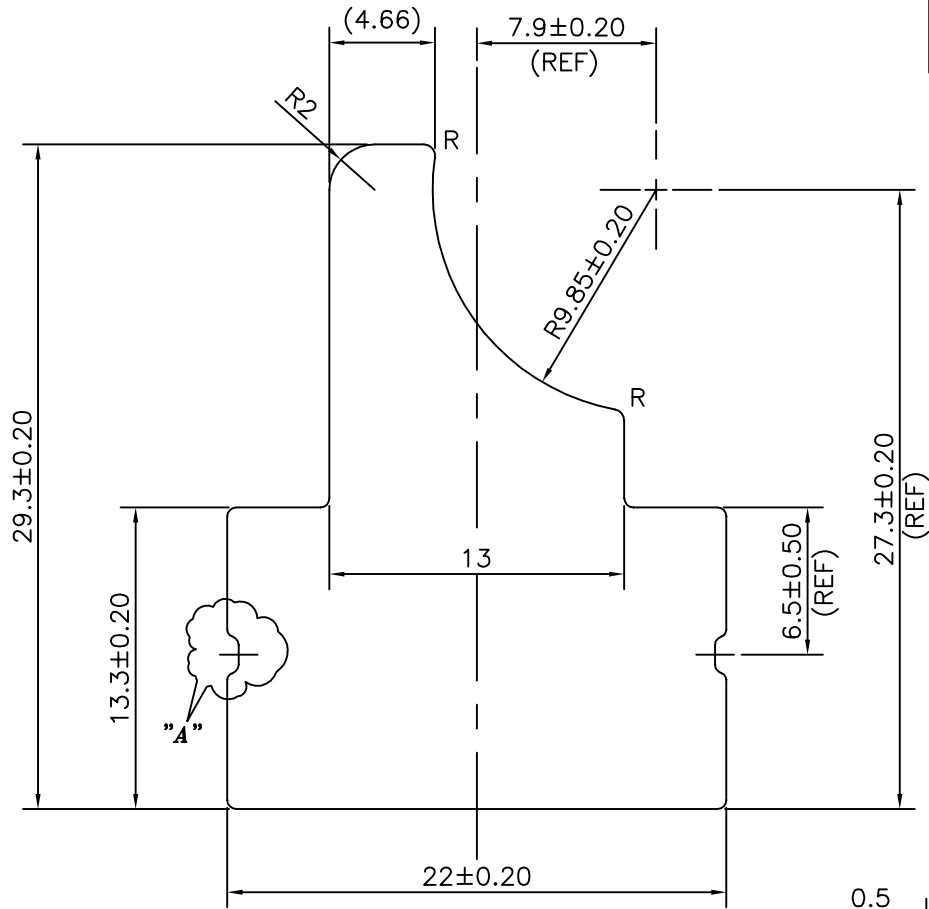
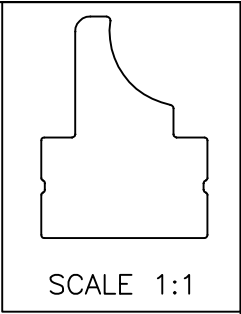



P-12612-1  
S3722  
28052



**DETAILS OF "A"**  
SCALE 10:1

R = 0.50 mm RADIUS (2 PLACES)

 SYMBOL OF QUALITY AN ISO 9001 COMPANY	<b>JINDAL ALUMINIUM LTD.</b> BANGALORE-560073 (INDIA)	NAME		DATE	
		DRAWN		SRIVATHSA	25-04-2013
		CHECKED			
APPROVED		S.S.GARG	27-04-2013		
1. ALL DIMENSIONS ARE IN mm. 2. ROUND OFF ALL SHARP CORNERS WITH 0.40 mm. 3. TOLERANCES WILL BE AS PER IS:3965-1981, UNLESS OTHERWISE SPECIFIED		SCALE		3:1	
		AREA mm <sup>2</sup>		418.763	
		PERIMETER mm.		97.238	
PARTY'S NAME		GLOBAL AUTOTECH LTD., GREATER NOIDA		WEIGHT kg/m	1.131
PARTY'S DRAWING No.		TC-EX-141-00 REV-01		DRAWING No.	SECTION No.
ALLOY & TEMPER		DA3103BD'O		P-12612-1	-
DESCRIPTION		TUBE CONNECTOR SECTION		S3722	S3722
				28052	28052