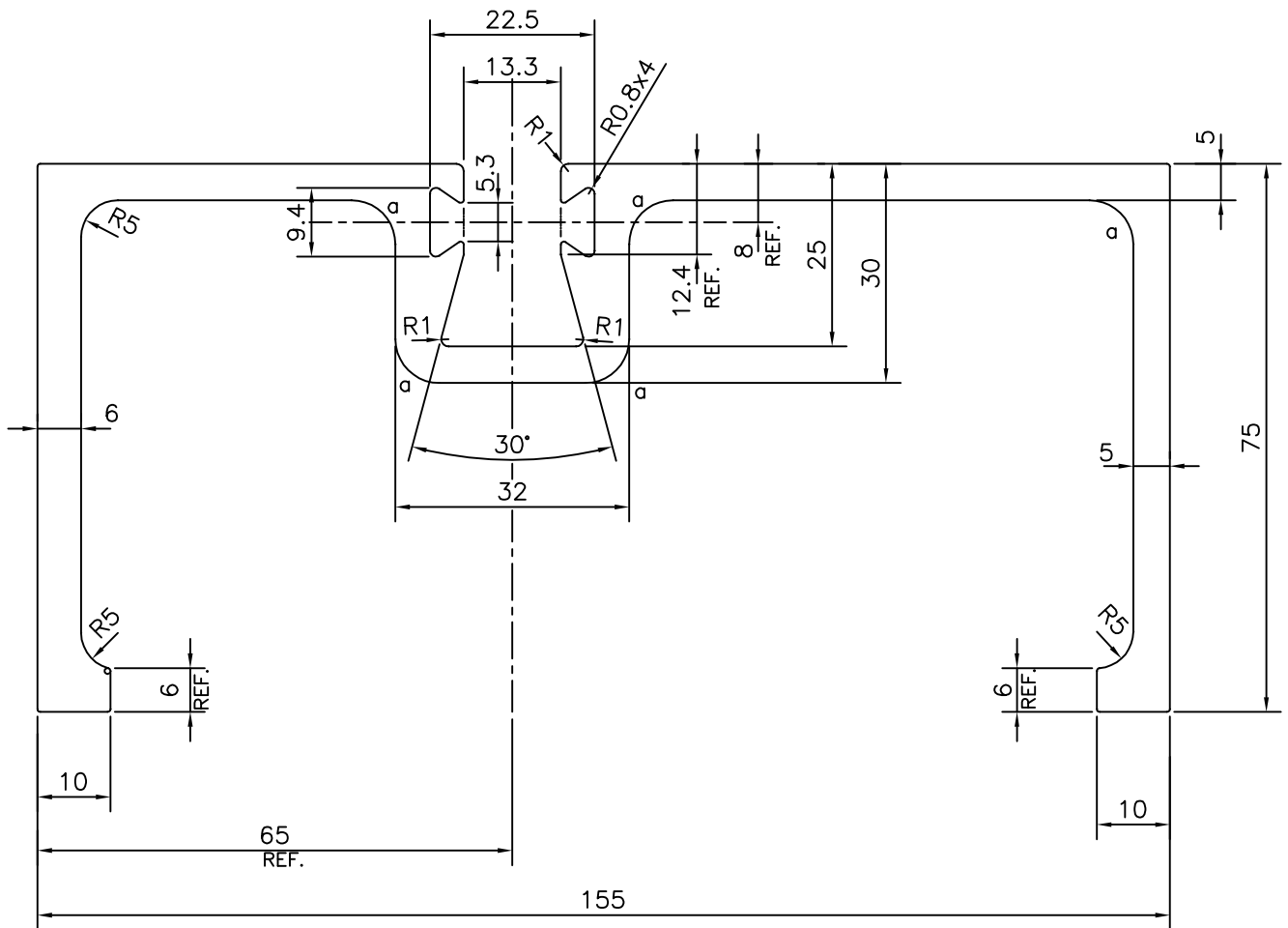


P-12258-2

S3613

28066



1. STRAIGHTNESS=1.0 mm/M
2. TWIST=1.0 mm/M
3. ANGULARITY=  $\pm 1.5^\circ$

a = RADIUS 6 mm. (5 PLACES)



SYMBOL OF QUALITY  
AN ISO 9001 COMPANY

**JINDAL ALUMINIUM LTD.**  
BANGALORE-560073 (INDIA)

	NAME	DATE
DRAWN	PARVESH	08-12-2012
CHECKED		
APPROVED	S.S.GARG	17-01-2013
SCALE		1:1
AREA mm <sup>2</sup>		1977.691
PERIMETER mm.		729.694
WEIGHT kg/m		5.340
DRAWING No.	SECTION No.	
P-12258-2	-	
S3613	S3613	
28066	28066	

1. ALL DIMENSIONS ARE IN mm.
2. ROUND OFF ALL SHARP CORNERS WITH 0.40 mm.
3. TOLERANCES WILL BE AS PER, IS:3965-1981 UNLESS OTHERWISE SPECIFIED

PARTY'S NAME	JASH ENGINEERING LTD., INDORE
PARTY'S DRAWING No.	JE/SG/GEN/1340
ALLOY & TEMPER	6061 T6
DESCRIPTION	SIDE & BOTTOM GUIDE FRAME