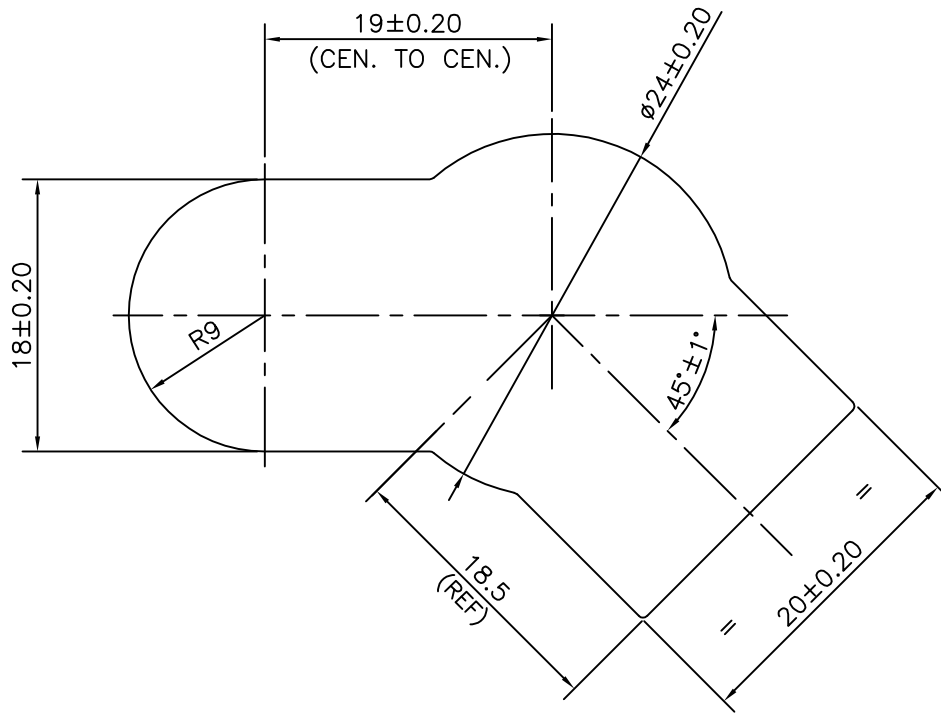
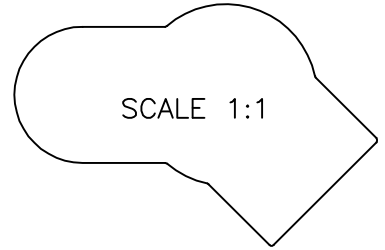


P-12470

S3671

28075



SYMBOL OF QUALITY
AN ISO 9001 COMPANY

JINDAL ALUMINIUM LTD.
BANGALORE-560073 (INDIA)

| | NAME | DATE |
|----------|-----------|------------|
| DRAWN | SRIVATHSA | 24-01-2013 |
| CHECKED | | |
| APPROVED | S.S.GARG | 25-02-2013 |

1. ALL DIMENSIONS ARE IN mm.
2. ROUND OFF ALL SHARP CORNERS WITH 0.40 mm.
3. TOLERANCES WILL BE AS PER IS:3965-1981, UNLESS OTHERWISE SPECIFIED

| | |
|----------------------|---------|
| SCALE | 2:1 |
| AREA mm ² | 889.818 |
| PERIMETER mm. | 125.153 |
| WEIGHT kg/m | 2.403 |

PARTY'S NAME GLOBAL AUTOTECH LTD., NOIDA

PARTY'S DRAWING No. TC-EX-176-00

ALLOY & TEMPER 6061 T6

DESCRIPTION TUBE CONNECTOR SECTION

| DRAWING No. | SECTION No. |
|-------------|-------------|
| P-12470 | - |
| S3671 | S3671 |
| 28075 | 28075 |