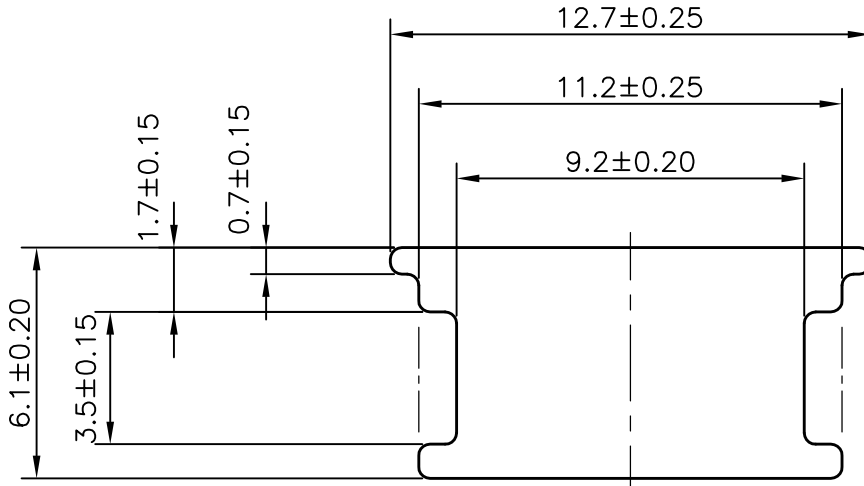
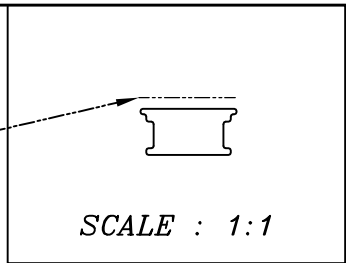


P-11544-1
S3187
28077


BETTER
FINISH



SECTION IS SYMMETRICAL
ABOUT CENTER LINE.

1. STRAIGHTNESS=1.7mm/M
2. TWIST=1.0mm/M
3. ANGULARITY= ±2°
4. FLATNESS = ±0.3 mm

ROUND OFF ALL SHARP CORNERS WITH 0.30 mm.

 SYMBOL OF QUALITY AN ISO 9001 COMPANY	JINDAL ALUMINIUM LTD. BANGALORE-560073 (INDIA)		NAME	DATE
		DRAWN	PARVESH	06-02-2012
		CHECKED		
		APPROVED	S.S. GARG	13-02-2012
1. ALL DIMENSIONS ARE IN mm. 2. ROUND OFF ALL SHARP CORNERS WITH 0.30 mm. 3. TOLERANCES WILL BE AS PER BS:EN-755-9, UNLESS OTHERWISE SPECIFIED		SCALE		5:1
		AREA mm ²		62.293
		PERIMETER mm.		39.54
		WEIGHT kg/m		0.168
PARTY'S NAME	SAINI TECHNICAL SERVICE CENTRE, AMBALA CANTT.	DRAWING No.	SECTION No.	
PARTY'S DRAWING No.	STSC-108-SEC	P-11544-1		
ALLOY & TEMPER	6063 T6	S3187	S3187	
		28077	28077	
DESCRIPTION	M.B.SLIDE			