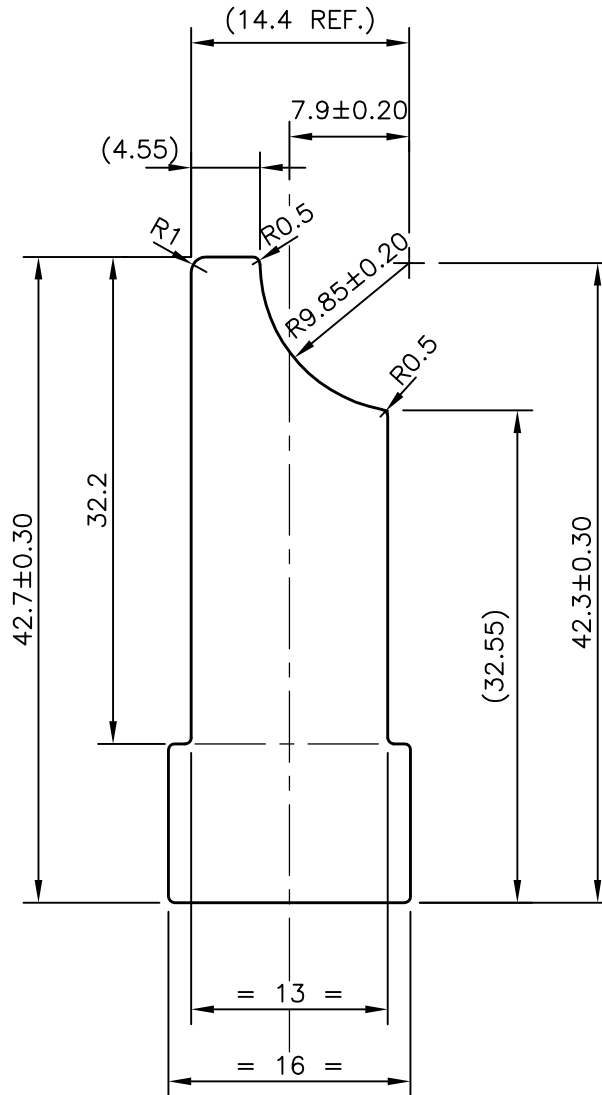
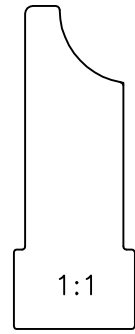


P-12894-1

S3846

28084



SYMBOL OF QUALITY  
AN ISO 9001 COMPANY

**JINDAL ALUMINIUM LTD.**  
BANGALORE-560073 (INDIA)

	NAME	DATE
DRAWN	J.P.KAUSHIK	19-07-2013
CHECKED		
APPROVED	S.S.GARG	04-09-2013
SCALE		2:1
AREA	mm <sup>2</sup>	520.39
PERIMETER	mm.	111.449
WEIGHT	kg/m	1.405
DRAWING No.	SECTION No.	
P-12894-1	-	
S3846	S3846	
28084	28084	

1. ALL DIMENSIONS ARE IN mm.
2. ROUND OFF ALL SHARP CORNERS WITH 0.40 mm.
3. TOLERANCES WILL BE AS PER IS:3965-1981 UNLESS OTHERWISE SPECIFIED

PARTY'S NAME	GLOBAL AUTOTECH LTD.,NOIDA
PARTY'S DRAWING No.	TC-EX-140-00 REV-01
ALLOY & TEMPER	3103SU (Mg-0.03,Si-0.55-0.58,Mn-1.02-1.08, Fe-0.25,Cu-0.45-0.52,Zn-0.05,Ti-0.03,Cr-0.01)
DESCRIPTION/END USE	TUBE CONNECTOR SECTION