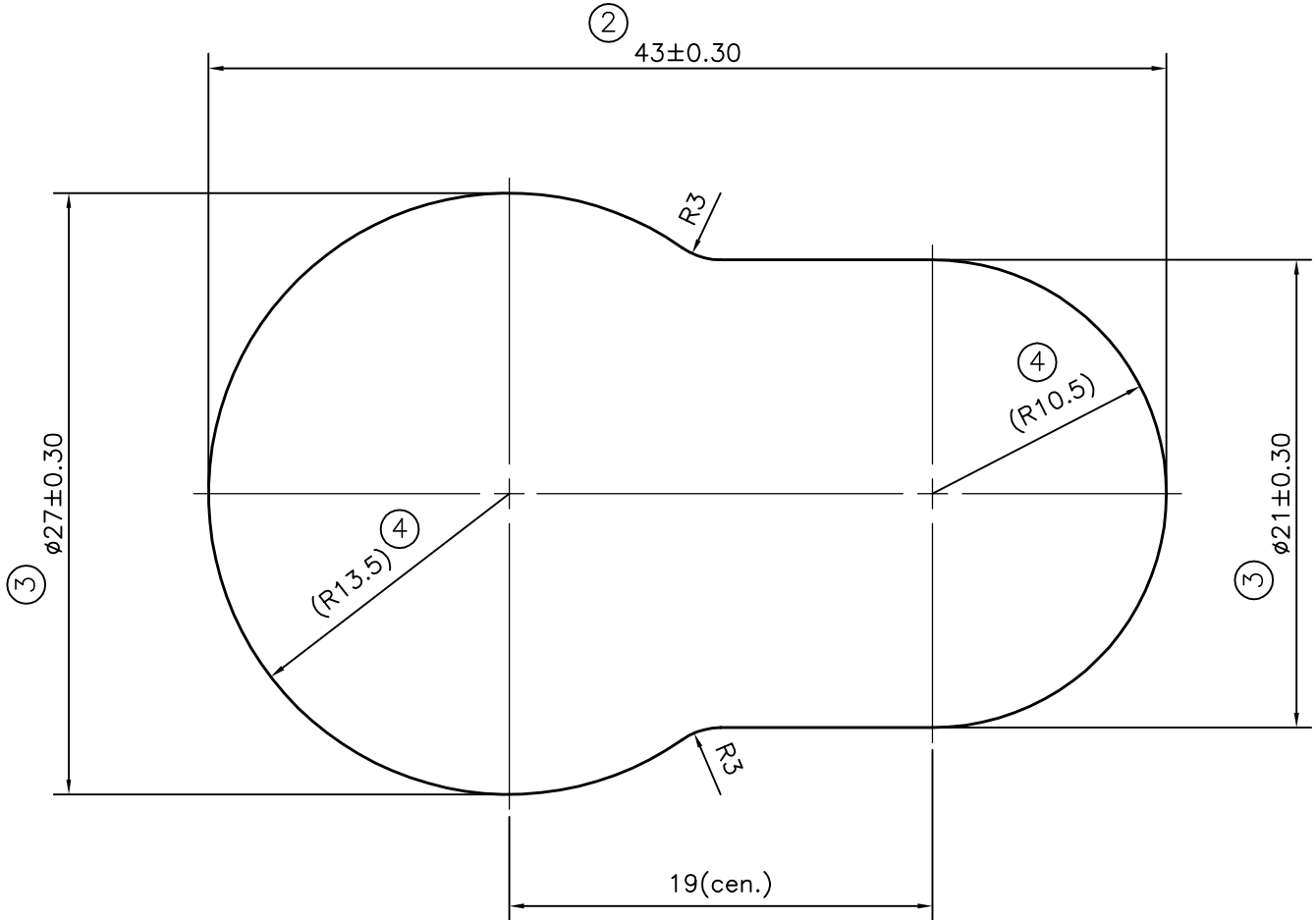
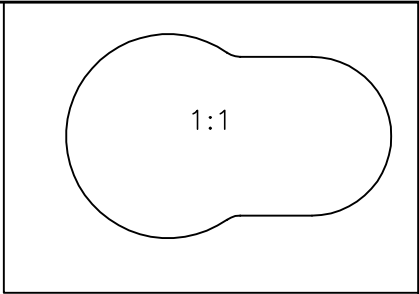


P-11587
S3237
28091



ISSUE:-2


TOLERANCE ADDED ON R13.5±0.30,R10.5±0.30 & DIMENSIONS 43±0.30

ISSUE:-3

TOLERANCE ADDED ON $\phi 27 \pm 0.30, \phi 21 \pm 0.30$

ISSUE:-4

RADIUS DIMENSIONS ADDED R13.5,R10.5

 SYMBOL OF QUALITY AN ISO 9001 COMPANY	JINDAL ALUMINIUM LTD. BANGALORE-560073 (INDIA)	NAME	DATE
		DRAWN	J.P.KAUSHIK 17-05-2012
		CHECKED	
		APPROVED	R.G.PAREKH 19-05-2012
1. ALL DIMENSIONS ARE IN mm. 2. ROUND OFF ALL SHARP CORNERS WITH 0.40 mm. 3. TOLERANCES WILL BE AS PER IS:3965-1981, UNLESS OTHERWISE SPECIFIED		SCALE	3:1
		AREA mm ²	893.432
		PERIMETER mm.	114.639
PARTY'S NAME	PRECISION COMPONENTS INDIA, MOHALI	WEIGHT kg/m	2.412
PARTY'S DRAWING No.	PCI-686	DRAWING No.	SECTION No.
ALLOY & TEMPER	6082 T6	P-11587	
DESCRIPTION	MISC.SECTION (CONNECTOR)	S3237	S3237(ISSUE-4)
		28091	28091