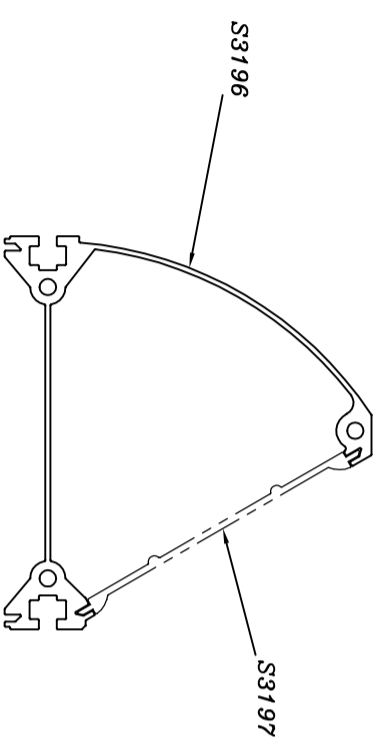
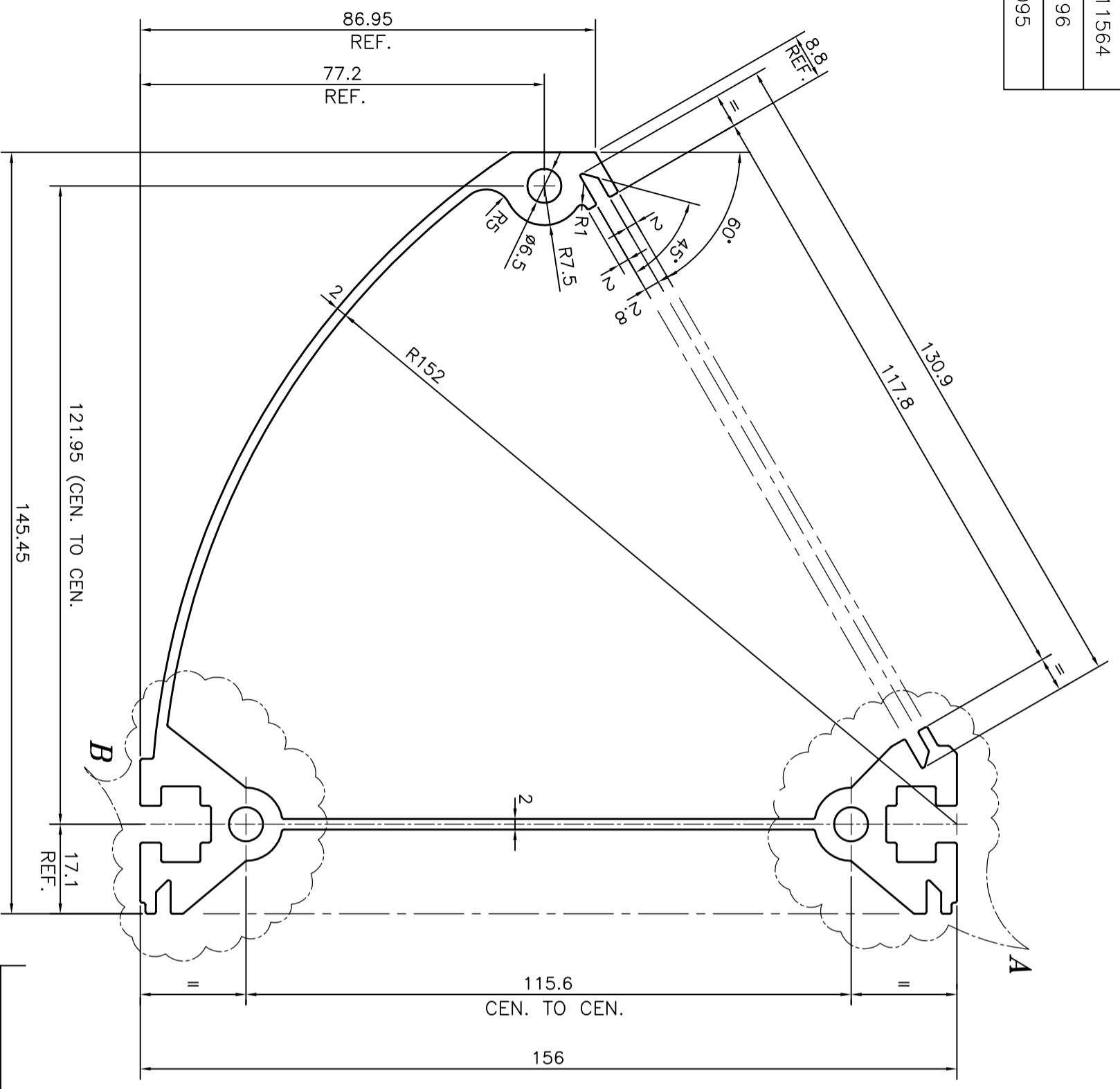
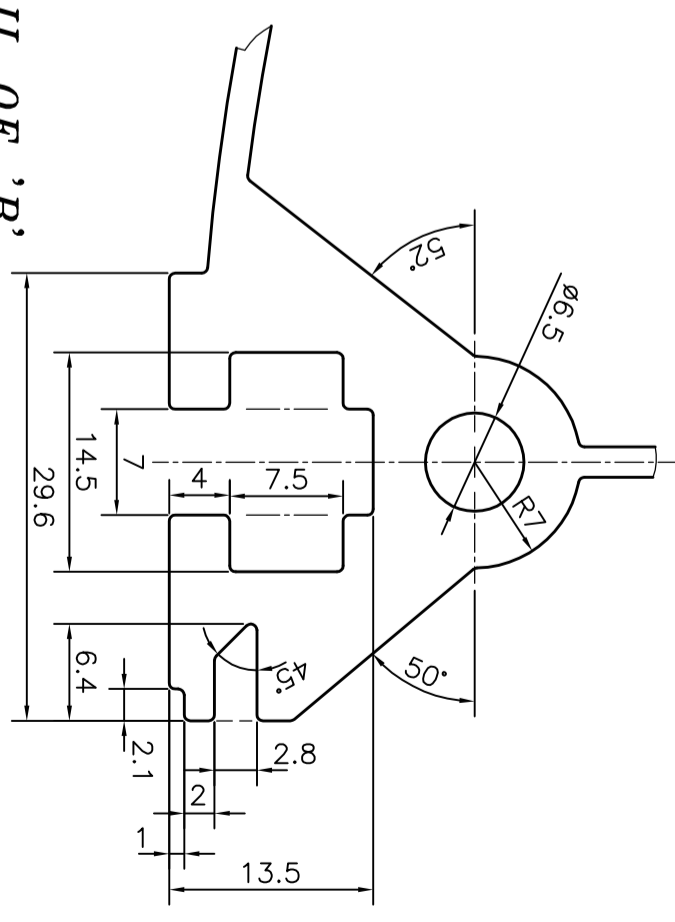


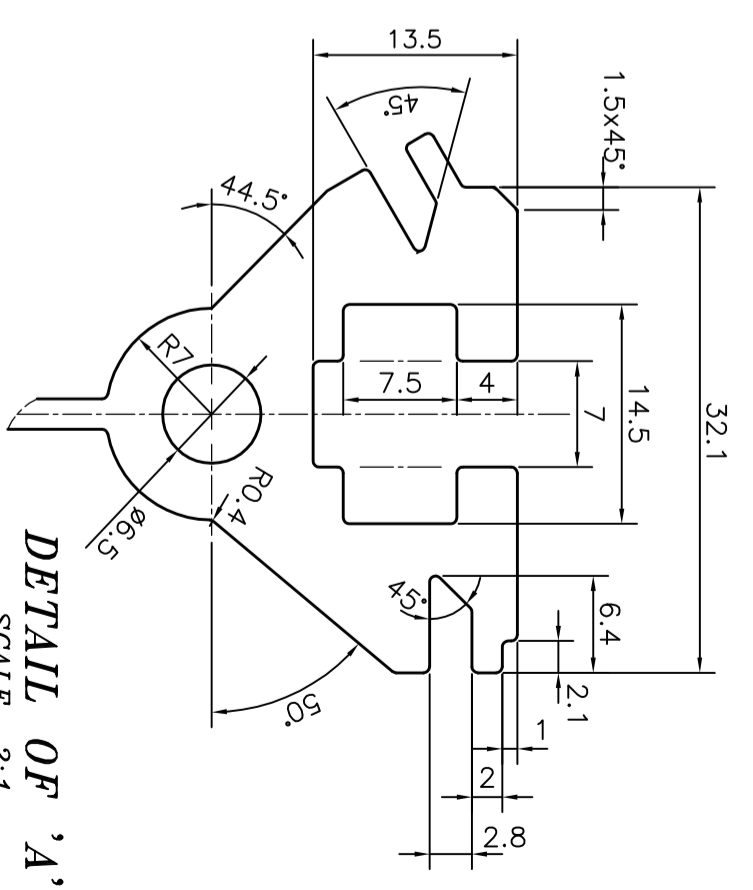
P-11564
S3196
28095



**DETAIL OF 'B'**  
SCALE 2:1



**DETAIL OF 'A'**  
SCALE 2:1



<p>SYMBOL OF QUALITY AN ISO 9001 COMPANY</p>	<p><b>JINDAL ALUMINIUM LTD.</b> BANGALORE-560073 (INDIA)</p>		<p>NAME <b>PARVESH</b></p>	<p>DATE 16-02-2012</p>	
	<p>1. ALL DIMENSIONS ARE IN mm. 2. ROUND OFF ALL SHARP CORNERS WITH 0.40 mm. 3. TOLERANCES WILL BE AS PER IS:6477-1983, UNLESS OTHERWISE SPECIFIED</p>		<p>CHECKED</p>	<p>APPROVED S.S. GARG</p>	<p>18-02-2012</p>
<p>PARTY'S NAME CONFIDENT DENTAL EQUIPMENT LTD., BANGALORE</p>	<p>PARTY'S DRAWING No. PC354102</p>	<p>SCALE 1:1</p>	<p>AREA mm<sup>2</sup> 1521.394</p>	<p>PERIMETER mm. 839.827</p>	<p>WEIGHT kg/m 4.108</p>
<p>ALLOY &amp; TEMPER HE9 WP</p>	<p>DESCRIPTION MISC. SECTION</p>	<p>DRAWING No. P-11564</p>	<p>SECTION No. -</p>	<p>DRAWING No. S3196</p>	<p>SECTION No. -</p>
				<p>DRAWING No. 28095</p>	<p>SECTION No. -</p>