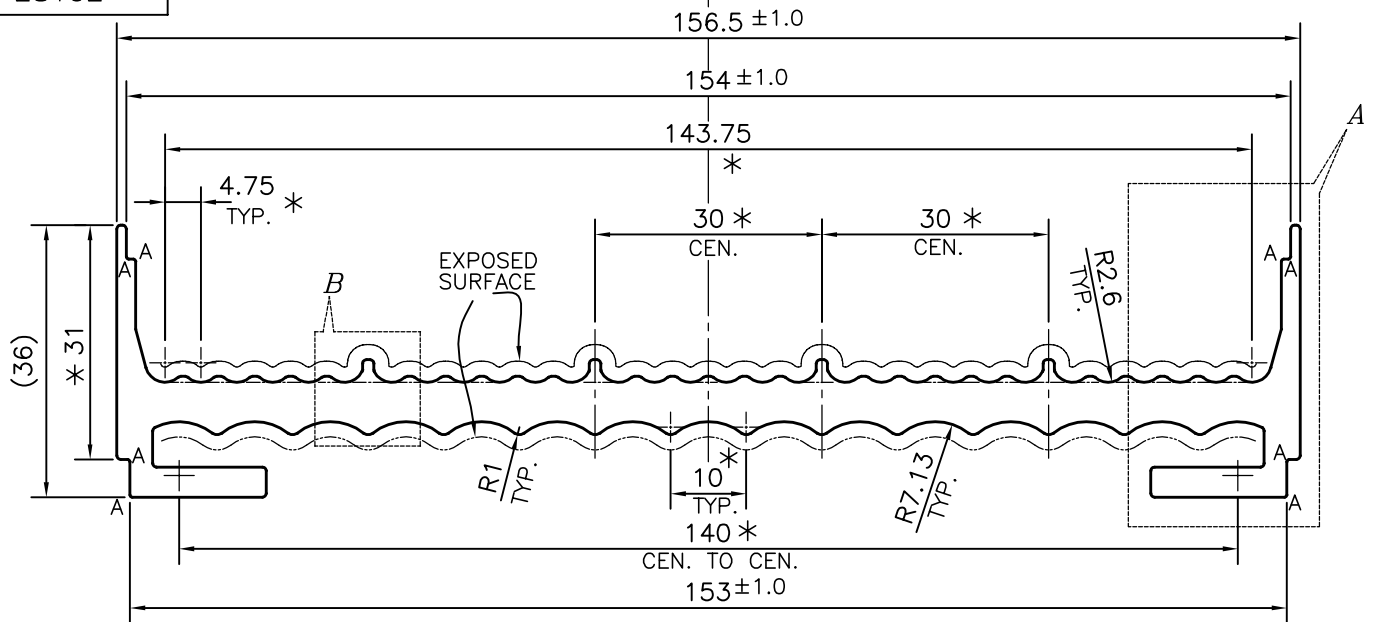


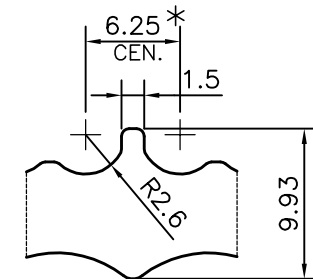
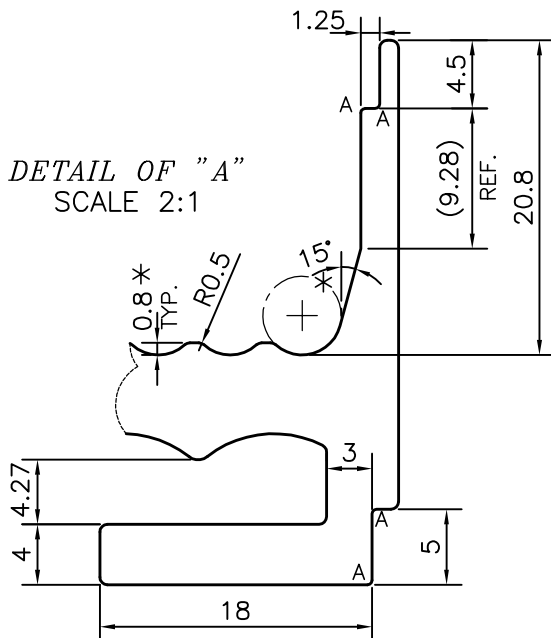
P-12953-1

S3829

28102



DETAIL OF "A"
SCALE 2:1



DETAIL OF "B"
SCALE 2:1

1. STRAIGHTNESS=1.7mm/M
 2. TWIST=1.7mm/M
 3. ANGULARITY= ±2°
 4. FLATNESS =1.8 mm
- A = RADIUS 0.3 mm. (8 PLACES)
* = CRITICAL DIMENSIONS

TOLERANCES ON OVERALL WIDTHS & WIDTHS ACROSS FLATS OF BARS, & REGULAR SECTIONS

UPTO 6.40mm - ±0.20	UPTO 32.0mm - ±0.38	UPTO 120.0mm - ±0.85	UPTO 320.00mm - ±1.70
UPTO 10.0mm - ±0.23	UPTO 50.0mm - ±0.46	UPTO 160.0mm - ±1.02	
UPTO 12.0mm - ±0.25	UPTO 60.0mm - ±0.53	UPTO 200.0mm - ±1.14	
UPTO 16.0mm - ±0.28	UPTO 80.0mm - ±0.69	UPTO 250.0mm - ±1.40	
UPTO 25.0mm - ±0.30	UPTO 100.0mm - ±0.75	UPTO 300.0mm - ±1.65	



SYMBOL OF QUALITY
AN ISO 9001 COMPANY

JINDAL ALUMINIUM LTD.
BANGALORE-560073 (INDIA)

	NAME	DATE
DRAWN	PARVESH	08-08-2013
CHECKED		
APPROVED	S.S.GARG	21-08-2013

1. ALL DIMENSIONS ARE IN mm.
2. ROUND OFF ALL SHARP CORNERS WITH 0.50 mm.
3. TOLERANCES WILL BE AS PER IS:3965-1981 , UNLESS OTHERWISE SPECIFIED

SCALE	1:1
AREA mm ²	1278.049
PERIMETER mm.	532.535
WEIGHT kg/m	3.451

PARTY'S NAME	ORANGE SORTING MACHINES (INDIA) PVT. LTD., COIMBATORE
PARTY'S DRAWING No.	CAM CHUTE NEW
ALLOY & TEMPER	63400 WP
DESCRIPTION	CHUTE SECTION

DRAWING No.	SECTION No.
P-12953-1	-
S3829	S3829
28102	28102