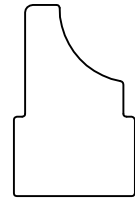
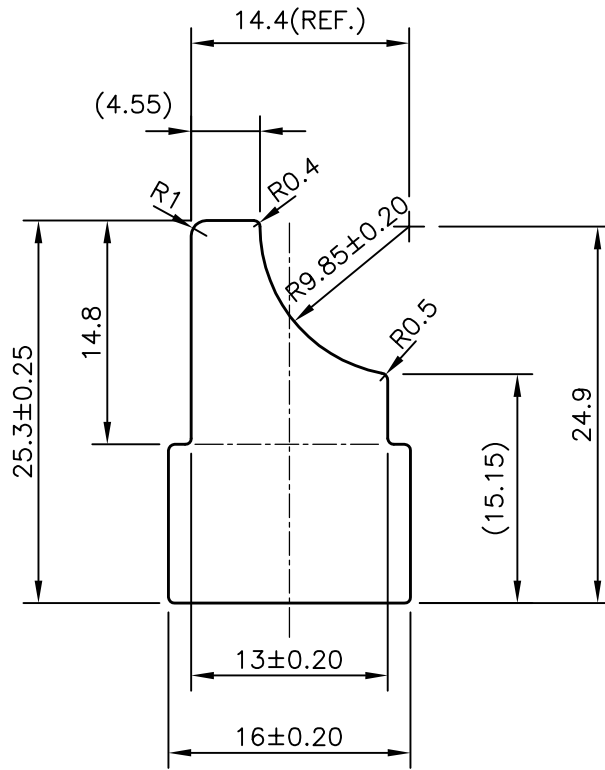



P-12924
S3848
28125



1:1



 SYMBOL OF QUALITY AN ISO 9001 COMPANY	JINDAL ALUMINIUM LTD. BANGALORE-560073 (INDIA)	NAME		DATE	
		DRAWN	J.P.KAUSHIK	24-07-2013	
1. ALL DIMENSIONS ARE IN mm. 2. ROUND OFF ALL SHARP CORNERS WITH 0.40 mm. 3. TOLERANCES WILL BE AS PER IS:3965-1981 UNLESS OTHERWISE SPECIFIED		CHECKED			
		APPROVED	S.S.GARG	04-09-2013	
PARTY'S NAME		GLOBAL AUTOTECH LTD.,NOIDA		SCALE	2:1
		PARTY'S DRAWING No.		TC-EX-110-00 REV-01	AREA mm ²
ALLOY & TEMPER		3103SU (Mg-0.03,Si-0.55-0.58,Mn-1.02-1.08, Fe-0.25,Cu-0.45-0.52,Zn-0.05,Ti-0.03,Cr-0.01)		PERIMETER mm.	76.692
		DESCRIPTION		TUBE CONNECTOR SECTION	WEIGHT kg/m
				DRAWING No.	P-12924
				SECTION No.	-
				S3848	S3848
				28125	28125