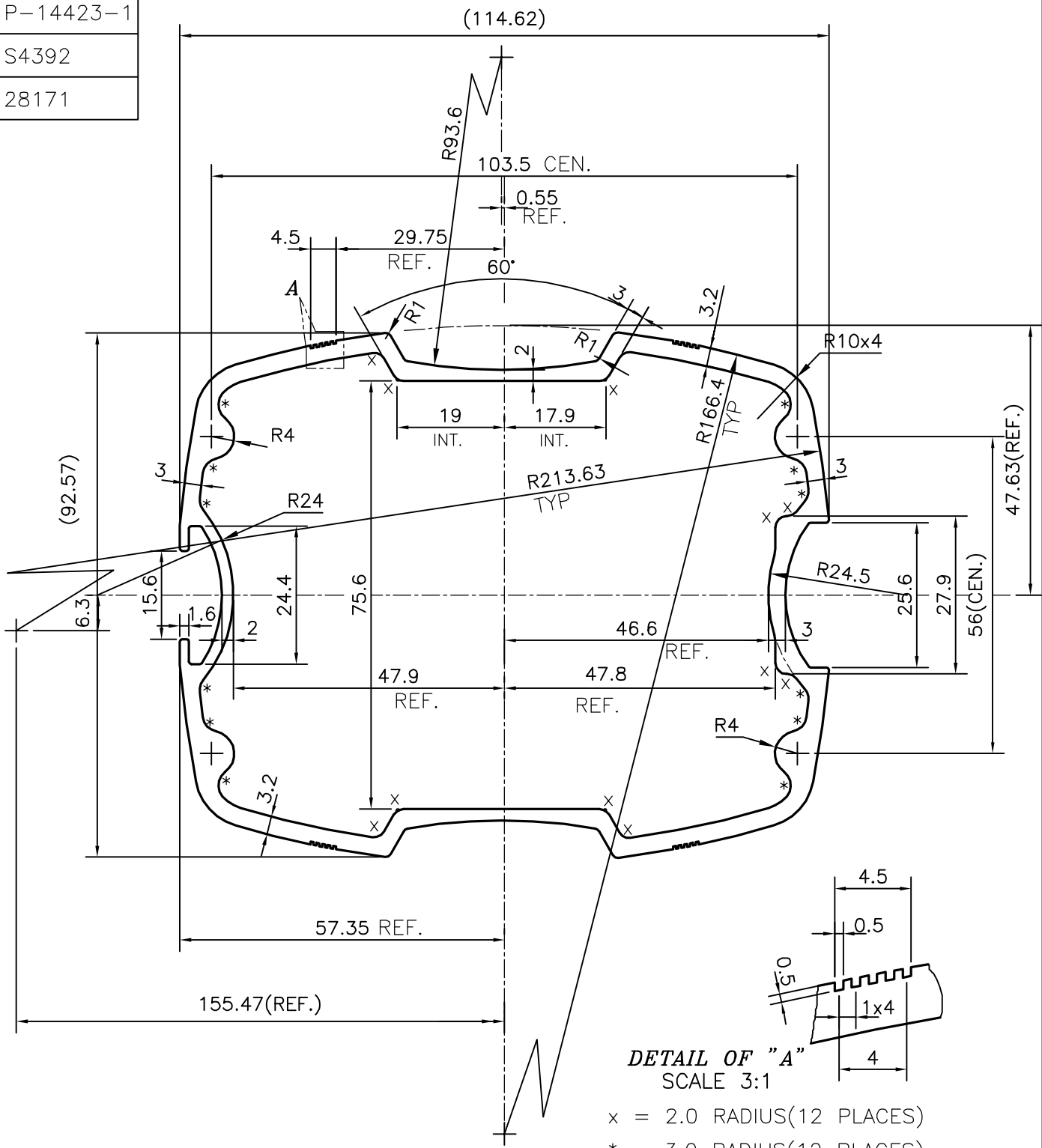



P-14423-1
S4392
28171



DETAIL OF "A"
SCALE 3:1

x = 2.0 RADIUS(12 PLACES)
* = 3.0 RADIUS(12 PLACES)

 SYMBOL OF QUALITY AN ISO 9001 COMPANY	JINDAL ALUMINIUM LTD. BANGALORE-560073 (INDIA)	NAME	DATE
		DRAWN	J.P.KAUSHIK 13-02-2015
		CHECKED	
		APPROVED	S.S.GARG 21-02-2015
		SCALE	1:1
		AREA mm ²	1284.531
		PERIMETER mm.	434.481
		WEIGHT kg/m	3.468
PARTY'S NAME	TVS MOTOR COMPANY LTD., HOSOUR	DRAWING No.	SECTION No.
PARTY'S DRAWING No.	AS PER AutoCAD DRAWING & REQUIREMENT	P-14423-1	-
ALLOY & TEMPER	6063 T6	S4392	S4392
DESCRIPTION	CASE AL-LI-BATTERY SECTION	28171	28171