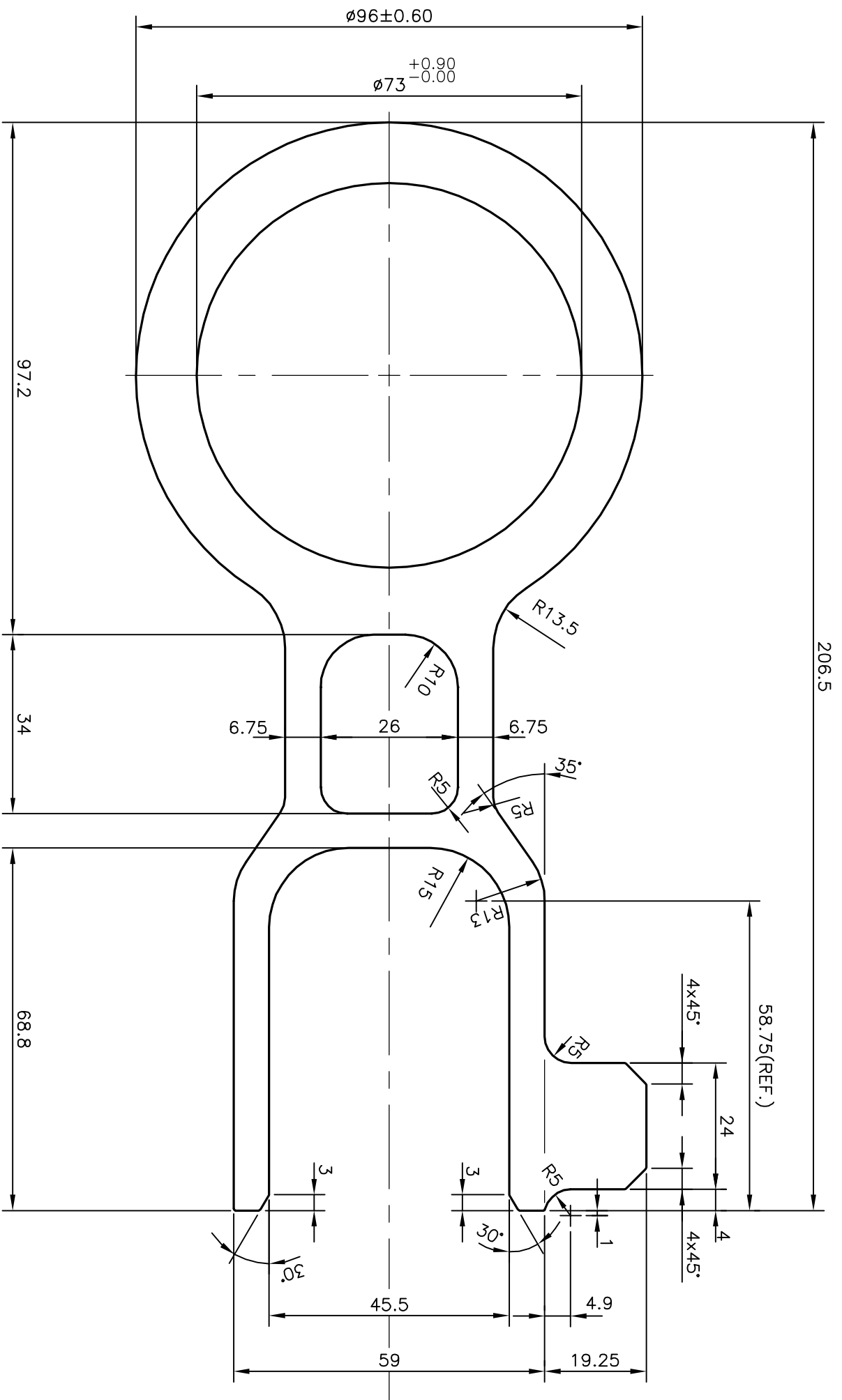



P-12833  
S3785  
28184



TOLERANCES ON OVERALL WIDTHS & WIDTHS ACROSS FLATS OF BARS, & REGULAR SECTIONS		UPTO 320.00mm - ±1.70	
UPTO 6.40mm - ±0.20	UPTO 32.0mm - ±0.38	UPTO 120.0mm - ±0.85	
UPTO 10.0mm - ±0.23	UPTO 50.0mm - ±0.46	UPTO 160.0mm - ±1.02	
UPTO 12.0mm - ±0.25	UPTO 60.0mm - ±0.53	UPTO 200.0mm - ±1.14	
UPTO 16.0mm - ±0.28	UPTO 80.0mm - ±0.69	UPTO 250.0mm - ±1.40	
UPTO 25.0mm - ±0.30	UPTO 100.0mm - ±0.75	UPTO 300.0mm - ±1.65	

 SYMBOL OF QUALITY AN ISO 9001 COMPANY		<b>JINDAL ALUMINIUM LTD.</b> BANGALORE-560073 (INDIA)	
1. ALL DIMENSIONS ARE IN mm. 2. ROUND OFF ALL SHARP CORNERS WITH 0.40 mm. 3. TOLERANCES WILL BE AS PER IS:6477-1983 UNLESS OTHERWISE SPECIFIED			
PARTY'S NAME	AVI WORLDWIDE PVT. LTD., MUMBAI		
PARTY'S DRAWING No.	AVI-3658-B		
ALLOY & TEMPER	HE9 WP		
DESCRIPTION	MISC. SECTION		

NAME	DATE
DRAWN J.P.KAUSHIK	11-06-2013
CHECKED	
APPROVED S.S.GARG	14-06-2013
SCALE	1:1
AREA mm <sup>2</sup>	5437.306
PERIMETER mm.	703.08
WEIGHT kg/m	14.681
DRAWING No.	SECTION No.
P-12833	-
S3785	S3785
28184	28184