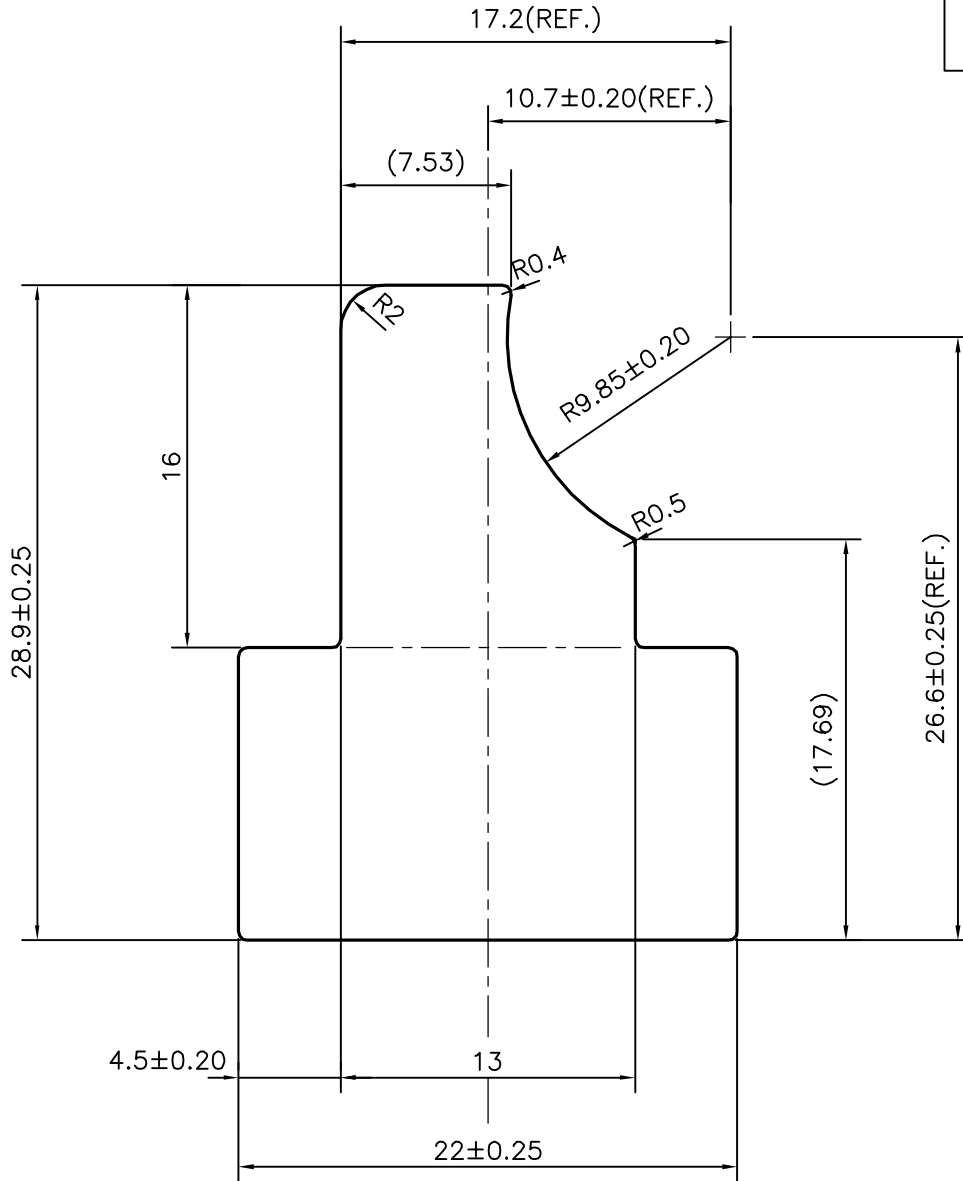
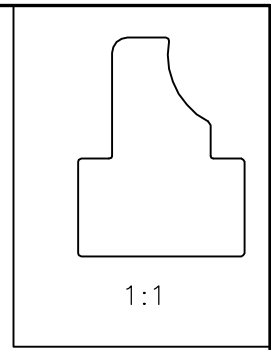



P-12893-1
S3845
28200



 SYMBOL OF QUALITY AN ISO 9001 COMPANY	JINDAL ALUMINIUM LTD. BANGALORE-560073 (INDIA)	DRAWN	J.P.KAUSHIK	DATE	19-07-2013
		CHECKED			
1. ALL DIMENSIONS ARE IN mm. 2. ROUND OFF ALL SHARP CORNERS WITH 0.40 mm. 3. TOLERANCES WILL BE AS PER, IS:3965-1981 UNLESS OTHERWISE SPECIFIED		APPROVED	S.S.GARG		04-09-2013
		SCALE			3:1
PARTY'S NAME GLOBAL AUTOTECH LTD., NOIDA		AREA	mm ²		441.893
		PERIMETER	mm.		96.436
PARTY'S DRAWING No. TC-EX-159-00 REV-01		WEIGHT	kg/m		1.193
		DRAWING No.		SECTION No.	
ALLOY & TEMPER 3103SU (Mg-0.03, Si-0.55-0.58, Mn-1.02-1.08, Fe-0.25, Cu-0.45-0.52, Zn-0.05, Ti-0.03, Cr-0.01)		P-12893-1			-
		S3845			S3845
DESCRIPTION TUBE CONNECTOR-SECTION		28200			28200