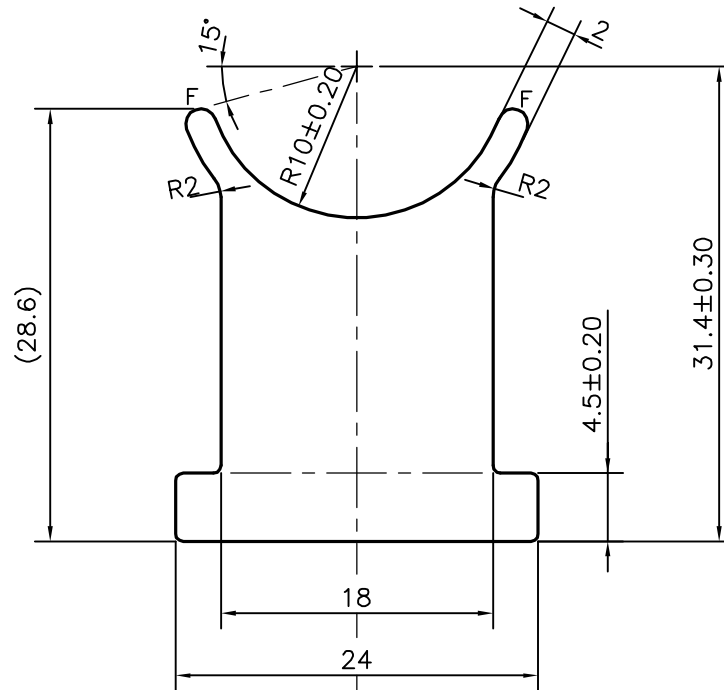
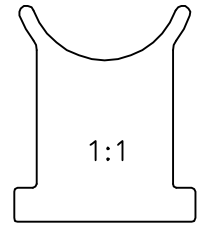


P-12933-1

S3966


28207



F= FULL RADIUS (2 PLACES)

TOLERANCES ON OVERALL WIDTHS & WIDTHS ACROSS FLATS OF BARS, & REGULAR SECTIONS

UPTO 6.40mm - ±0.20	UPTO 32.0mm - ±0.38	UPTO 120.0mm - ±0.85	UPTO 320.00mm - ±1.70
UPTO 10.0mm - ±0.23	UPTO 50.0mm - ±0.46	UPTO 160.0mm - ±1.02	
UPTO 12.0mm - ±0.25	UPTO 60.0mm - ±0.53	UPTO 200.0mm - ±1.14	
UPTO 16.0mm - ±0.28	UPTO 80.0mm - ±0.69	UPTO 250.0mm - ±1.40	
UPTO 25.0mm - ±0.30	UPTO 100.0mm - ±0.75	UPTO 300.0mm - ±1.65	

 SYMBOL OF QUALITY AN ISO 9001 COMPANY	JINDAL ALUMINIUM LTD. BANGALORE-560073 (INDIA)	DRAWN	J.P.KAUSHIK	DATE	26-12-2013
		CHECKED			
1. ALL DIMENSIONS ARE IN mm. 2. ROUND OFF ALL SHARP CORNERS WITH 0.50 mm. 3. TOLERANCES WILL BE AS PER IS:3965-1981 UNLESS OTHERWISE SPECIFIED		APPROVED	S.S.GARG		31-12-2013
		SCALE			2:1
PARTY'S NAME WONJIN AUTOPARTS PVT. LTD., MARAIMALAI NAGAR		AREA	mm ²		455.381
		PERIMETER	mm.		115.041
PARTY'S DRAWING No. PL F839/840 QQDAB02 & AS PER AutoCAD		WEIGHT	kg/m		1.230
		DRAWING No.		SECTION No.	
ALLOY & TEMPER 6005 T5		P-12933-1		-	
		S3966		S3966	
DESCRIPTION INLET & OUTLET FLANGE SECTION		28207		28207	