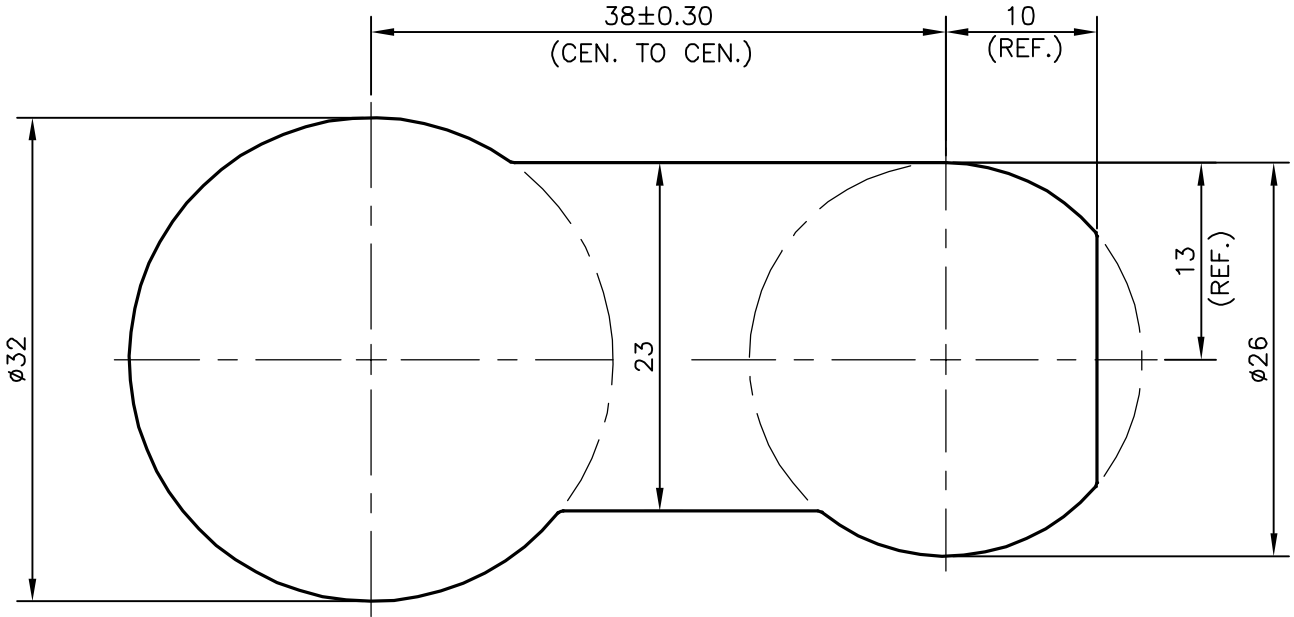
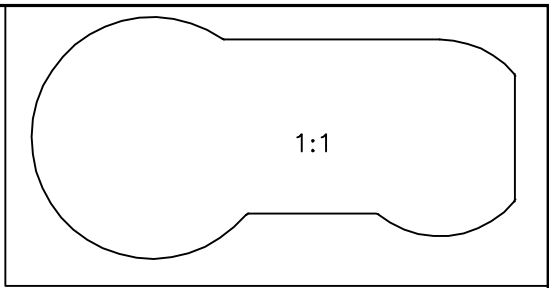


| |
|---------|
| P-13180 |
| S3932 |
| 28211 |




ISSUE-2

☞ ALLOY CHANGED FROM 6063 T6 TO 6061 T6.
AS PER CUSTOMER'S REQUIREMENT.
AS PER E-MAIL DATED 29-11-2013.

TOLERANCES ON OVERALL WIDTHS & WIDTHS ACROSS FLATS OF BARS, & REGULAR SECTIONS

| | | | |
|---------------------|----------------------|----------------------|---|
| UPTO 6.40mm - ±0.20 | UPTO 32.0mm - ±0.38 | UPTO 120.0mm - ±0.85 | 1. STRAIGHTNESS=1.7mm/M 2. TWIST=1.7mm/M 3. ANGULARITY= ±2° 4. FLATNESS =0.007xWIDTH |
| UPTO 10.0mm - ±0.23 | UPTO 50.0mm - ±0.46 | UPTO 160.0mm - ±1.02 | |
| UPTO 12.0mm - ±0.25 | UPTO 60.0mm - ±0.53 | UPTO 200.0mm - ±1.14 | |
| UPTO 16.0mm - ±0.28 | UPTO 80.0mm - ±0.69 | UPTO 250.0mm - ±1.40 | |
| UPTO 25.0mm - ±0.30 | UPTO 100.0mm - ±0.75 | UPTO 320.0mm - ±1.70 | |
| | | | |

| | | | |
|--|--|----------------------|----------------|
|  SYMBOL OF QUALITY AN ISO 9001 COMPANY | JINDAL ALUMINIUM LTD. BANGALORE-560073 (INDIA) | NAME | DATE |
| | | DRAWN | SRIYATHSA |
| | | CHECKED | |
| | | APPROVED | S.S.GARG |
| | | | 29-11-2013 |
| 1. ALL DIMENSIONS ARE IN mm. 2. ROUND OFF ALL SHARP CORNERS WITH 0.40 mm. 3. TOLERANCES WILL BE AS PER IS:3965-1981 , UNLESS OTHERWISE SPECIFIED | | SCALE | 2:1 |
| | | AREA mm ² | 1595.784 |
| | | PERIMETER mm. | 168.804 |
| PARTY'S NAME | GLOBAL AUTOTECH LTD., NOIDA | WEIGHT kg/m | 4.309 |
| PARTY'S DRAWING No. | TC-EX-257-00 | DRAWING No. | SECTION No. |
| | | P-13180 | - |
| | | S3932 | S3932(ISSUE-2) |
| | | 28211 | 28211 |
| ALLOY & TEMPER | 6061 T6 | | |
| DESCRIPTION | TUBE CONNECTOR SECTION | | |