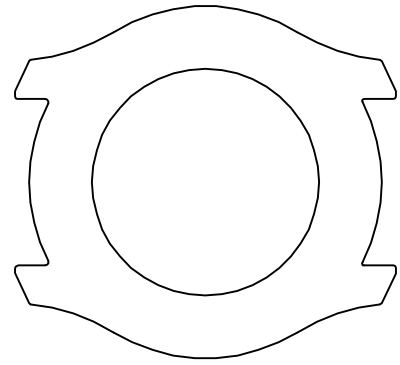


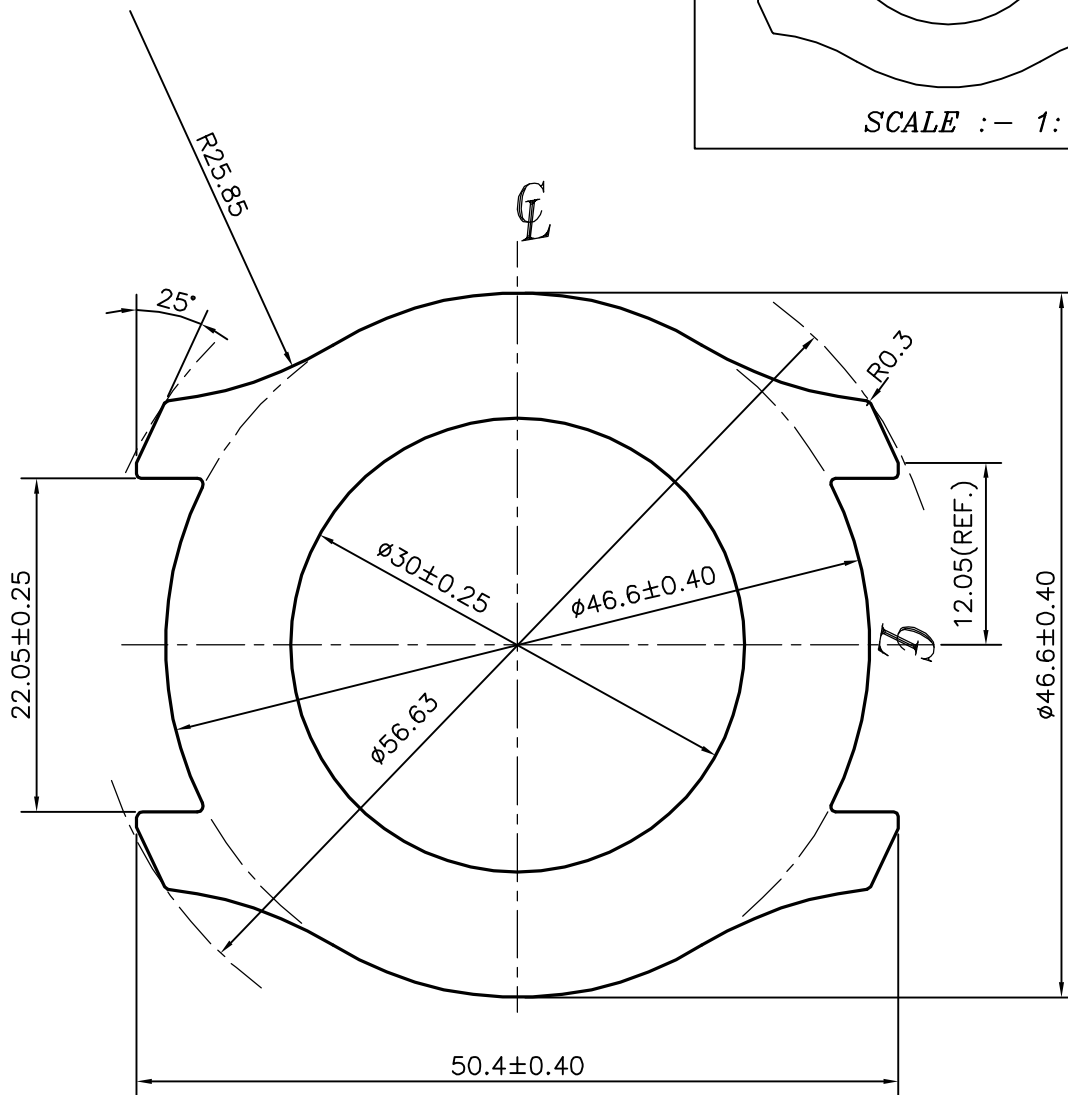
P-13496-2

S4209

28220



SCALE :- 1:1



1. STRAIGHTNESS=1.5mm/M
2. TWIST=1.5mm/M
3. OVALITY=±0.50mm



SYMBOL OF QUALITY
AN ISO 9001 COMPANY

JINDAL ALUMINIUM LTD.
BANGALORE-560073 (INDIA)

	NAME	DATE
DRAWN	J.P.KAUSHIK	30-07-2014
CHECKED		
APPROVED	S.S.GARG	18-08-2014
SCALE		2:1
AREA mm ²		1137.689
PERIMETER mm.		182.966
WEIGHT kg/m		3.072
DRAWING No.	SECTION No.	
P-13496-2	-	
S4209	S4209	
28220	28220	

1. ALL DIMENSIONS ARE IN mm.
2. ROUND OFF ALL SHARP CORNERS WITH 0.30 mm.
3. TOLERANCES WILL BE AS PER IS:6477-1983 , UNLESS OTHERWISE SPECIFIED

PARTY'S NAME	TITAN INDUSTRIES LTD., HOSUR
PARTY'S DRAWING No.	TS-25-106-b
ALLOY & TEMPER	6063 T6
DESCRIPTION	WATCH CASE