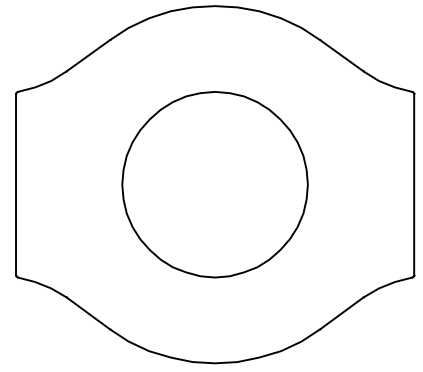


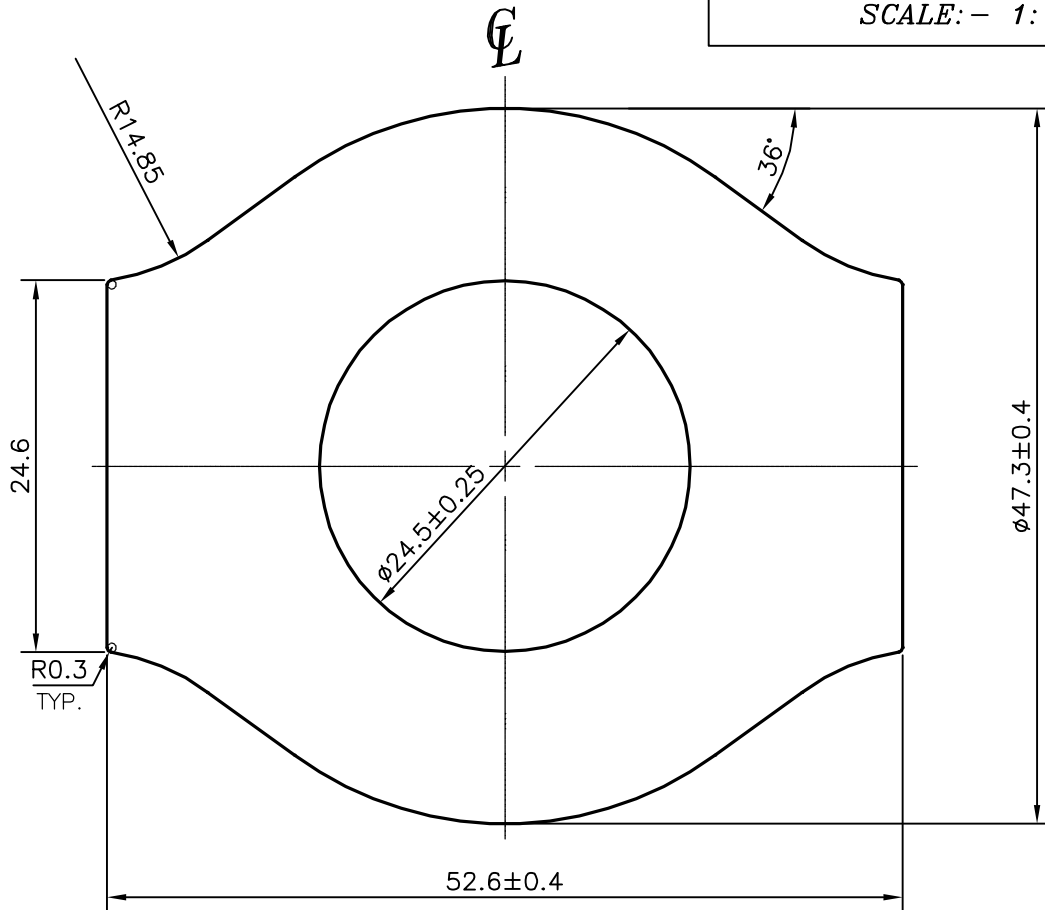
P-13564-2

S4114

28222



SCALE:- 1:1



1. STRAIGHTNESS=1.5mm/M
2. TWIST=1.5mm/M
3. ANGULARITY=  $\pm 2^\circ$
4. FLATNESS =0.007xWIDTH
5. OVALITY =  $\pm 0.50$  mm.



SYMBOL OF QUALITY  
AN ISO 9001 COMPANY

**JINDAL ALUMINIUM LTD.**  
BANGALORE-560073 (INDIA)

	NAME	DATE
DRAWN	PARVESH	07-05-2014
CHECKED		
APPROVED	S.S.GARG	19-05-2014
SCALE		2:1
AREA mm <sup>2</sup>		1508.785
PERIMETER mm.		165.529
WEIGHT kg/m		4.074
DRAWING No.	SECTION No.	
P-13564-2	-	
S4114	S4114	
28222	28222	

1. ALL DIMENSIONS ARE IN mm.
2. ROUND OFF ALL SHARP CORNERS WITH 0.30 mm.
3. TOLERANCES WILL BE AS PER BS:EN-12020-2 , UNLESS OTHERWISE SPECIFIED

PARTY'S NAME	TITAN INDUSTRIES LTD., HOSUR
PARTY'S DRAWING No.	AS PER AUTO CAD DRAWING-TS-25-110 b
ALLOY & TEMPER	6063 T6
DESCRIPTION	WATCH CASE SECTION