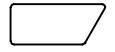


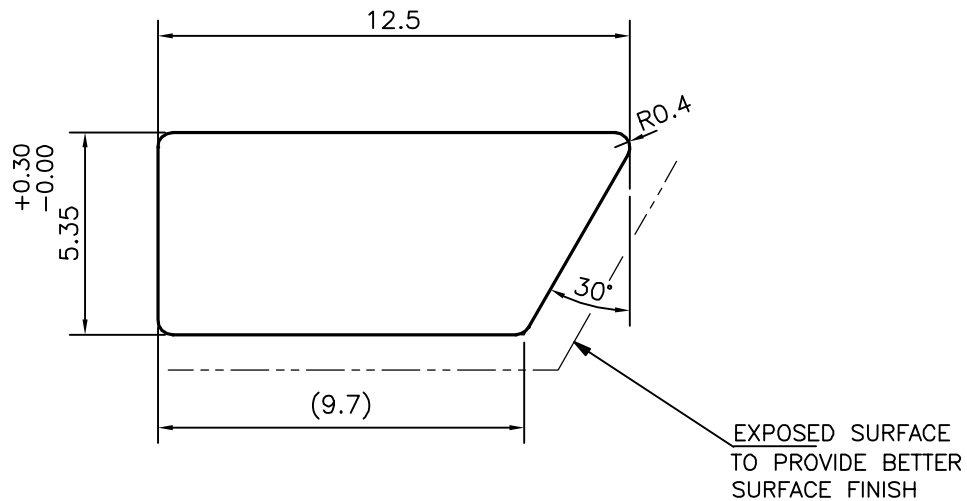
P-13325-1

S3999

28228



1:1



TOLERANCES ON OVERALL WIDTHS & WIDTHS ACROSS FLATS OF BARS, & REGULAR SECTIONS

UPTO 6.40mm - ± 0.20	UPTO 32.0mm - ± 0.38	UPTO 120.0mm - ± 0.85	1. STRAIGHTNESS= 1.7mm/M 2. TWIST= 1.7mm/M 3. ANGULARITY= $\pm 1.5^\circ$ 4. FLATNESS = ± 0.18 mm
UPTO 10.0mm - ± 0.23	UPTO 50.0mm - ± 0.46	UPTO 160.0mm - ± 1.02	
UPTO 12.0mm - ± 0.25	UPTO 60.0mm - ± 0.53	UPTO 200.0mm - ± 1.14	
UPTO 16.0mm - ± 0.28	UPTO 80.0mm - ± 0.69	UPTO 250.0mm - ± 1.40	
UPTO 25.0mm - ± 0.30	UPTO 100.0mm - ± 0.75	UPTO 320.0mm - ± 1.70	



SYMBOL OF QUALITY
AN ISO 9001 COMPANY

JINDAL ALUMINIUM LTD.
BANGALORE-560073 (INDIA)

	NAME	DATE
DRAWN	SRIYATHSA	13-01-2014
CHECKED		
APPROVED	S.S.GARG	27-01-2014

1. ALL DIMENSIONS ARE IN mm.
2. ROUND OFF ALL SHARP CORNERS WITH 0.40 mm.
3. TOLERANCES WILL BE AS PER IS:3965-1981, UNLESS OTHERWISE SPECIFIED

SCALE	5:1
AREA mm ²	59.992
PERIMETER mm.	33.090
WEIGHT kg/m	0.162

PARTY'S NAME N.K.JAIN INSTRUMENTS PVT.LTD., AMBALA CANTT

DRAWING No. SECTION No.

PARTY'S DRAWING No. AS PER SAMPLE & REQUIREMENT

P-13325-1 -

ALLOY & TEMPER 6063 T6

S3999 S3999

28228 28228

DESCRIPTION MISC, BAR