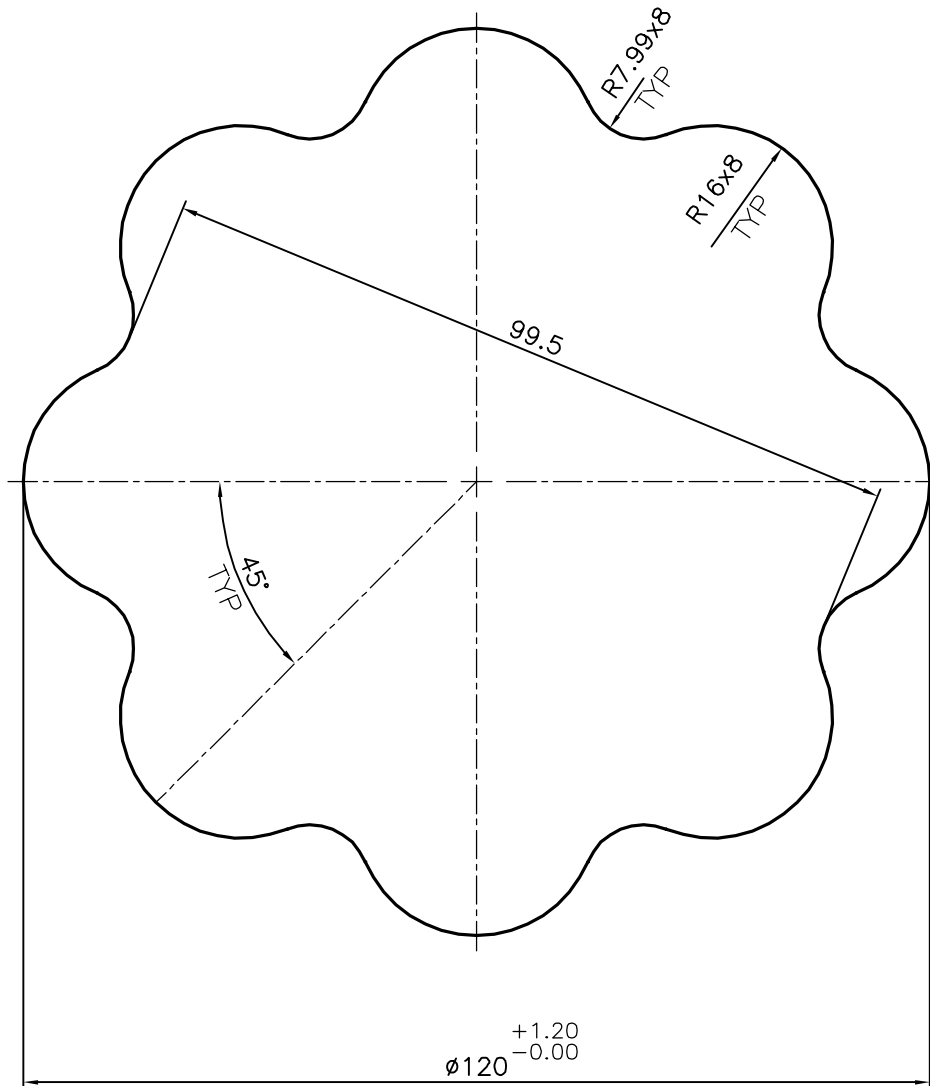


P-15240

S4711

28231



TOLERANCE ADDED ON(13/11/2015) DIMENSIONS  $\phi 120$   $\begin{matrix} +1.20 \\ -0.00 \end{matrix}$



SYMBOL OF QUALITY  
AN ISO 9001 COMPANY

**JINDAL ALUMINIUM LTD.**  
BANGALORE-560073 (INDIA)

	NAME	DATE
DRAWN	J.P.KAUSHIK	14-10-2015
CHECKED		
APPROVED	S.S.GARG	19-10-2015
SCALE		1:1
AREA mm <sup>2</sup>		9778.051
PERIMETER mm.		399.16
WEIGHT kg/m		26.401
DRAWING No.	SECTION No.	
P-15240	-	
S4711	S4711	
28231	28231	

1. ALL DIMENSIONS ARE IN mm.
2. ROUND OFF ALL SHARP CORNERS WITH 0.40 mm.
3. TOLERANCES WILL BE AS PER IS:3965-1981, UNLESS OTHERWISE SPECIFIED

PARTY'S NAME	OBLUM ELECTRICAL INDUSTRIES PVT. LTD., HYDERABAD
PARTY'S DRAWING No.	PBC-T20-TBC3-D128
ALLOY & TEMPER	HE30 WP
DESCRIPTION	TERMINAL BLOCK SECTION